



مؤسسة الإمارات للتعليم المدرسي
EMIRATES SCHOOLS ESTABLISHMENT



امتحان نهاية الفصل الدراسي الأول 2024/2023

End of Term1 Exam 2023/ 2024

| | | |
|------------|----------------|------------------|
| رقم الطالب | Student Number | |
| اسم الطالب | Sudent Name | |
| المدرسة | School | |
| الصف | Class | Grade 3 |
| المسار | Stream | General |
| المادة | Subject | Science- Inspire |
| | | علوم - انسيير |

| | | |
|---------------|-------|-----|
| الدرجة الكلية | Total | |
| | | 100 |

| | | |
|---------------------|--------------------|-----------------|
| المراجع Reviewer | المقَدّر Marker | الاسم Name |
| | | |
| | | التوقيع Sign |
| | | |



N1ALN0322ADEN03GENSCIT1P100

- يحظر تصوير أو تداول الورقة الامتحانية قبل أو أثناء أو بعد الامتحان من خلال البريد الالكتروني أو وسائل التواصل الاجتماعي أو أي وسيلة أخرى ومن يخالف ذلك سيتخذ في حقه الإجراءات القانونية المتبعة.
- على إدارات المدارس ولجان الامتحانات ومراكز التقدير مراعاة ذلك ورصد أي مخالفات والعمل على اتخاذ الإجراءات اللازمة.



Dear Students

Important Guidelines

1

Make sure the number of pages in the question booklet

2

Read questions carefully and organize your thoughts before starting to answer

2

اقرأ الأسئلة جيداً ورتب أفكارك قبل البدء بالإجابة

1

تأكد من عدد أوراق كتيب الأسئلة

3

Use the blue pen to answer the question booklet

4

Review your answers before submitting and leaving the examination hall

4

راجع إجابتك جيداً قبل التسليم ومغادرة القاعة الامتحانية

3

استخدم القلم الجاف الأزرق في الإجابة على كتيب الأسئلة

Seek assistance if you encounter any issues

اطلب المساعدة إذا واجهتك مشكلة

Circle the letter corresponding to the correct answer.

Part 1

Question

1

Which of the letters below represents an object that will need more force to move?



A

A

B

B

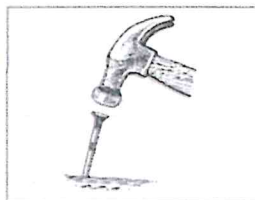
C

C

Question

2

Hitting a nail with a hammer is a



A

Pull force

B

Push force

C

Balanced force



Question

3

Ahmad is playing with marbles on three different surfaces, glass, wood and carpet.
Which of the following surfaces will cause the least frictional force on the marbles?



A

Carpet

B

Glass

C

Wood

Question

4

Which pair of balloons will repel each other?



A



B



C

A

A

B

B

C

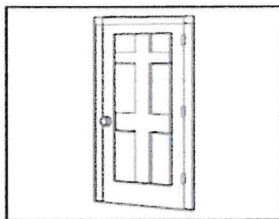
C



Question

5

Which of the following will cause a shock when a person touches a doorknob?



A

Electrical current

B

Insulated wires

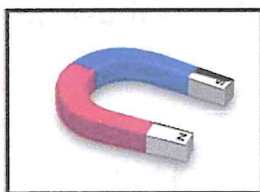
C

Static electricity

Question

6

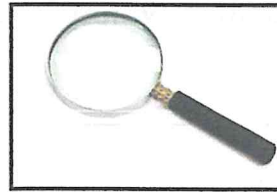
Which letter represents a tool that can be used to separate the iron filing from paper pieces?



A



B



C

A

A

B

B

C

C



Question

7

In the figure below, which letter represents an appliance that uses electric currents to heat objects?



A



B



C

A

A

B

B

C

C

Question

8

In the figure below, which letter represents an object that will get attracted to the magnet?



A



B



C

A

A

B

B

C

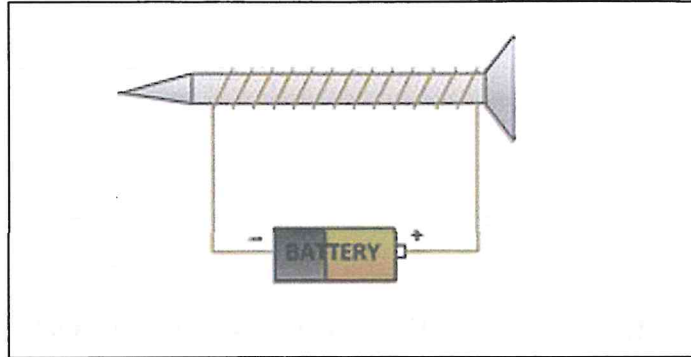
C



Question

9

The figure below shows a simple electromagnet, which of the following **will increase** the strength of the magnet?



A

Using a smaller size battery

B

Removing the nail

C

Using two batteries

Question

10

Which of the following **is not a need** for plants?



Water



Sunlight



Shelter

A

Water

B

Sunlight

C

Shelter



Question

11

When a bird flies south for the winter, it is called

A

hibernating

B

migrating

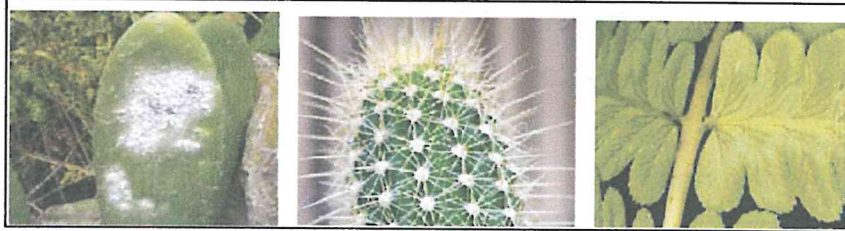
C

miming

Question

12

Which of the following plants' features **is not** an adaptation to living in the dessert?



A

The thick waxy coating

B

Spiky leaves

C

Big leaves with grooves

Question

13

Over time, a giraffe's neck has become longer to adapt to the changes in the environment. Why do you think this has happened?

A

The giraffe needs to reach the leaves in the trees.

B

The giraffe needs to carry its young.

C

The giraffe needs to get more air.



Question

14

Which of the following letters represents an animal that uses **mimicry** to survive its environment?



A



B



C

A

A

B

B

C

C

Question

15

Which of the following letters represents an animal that is adapted to living in the **hot** environment?



A



B



C

A

A

B

B

C

C

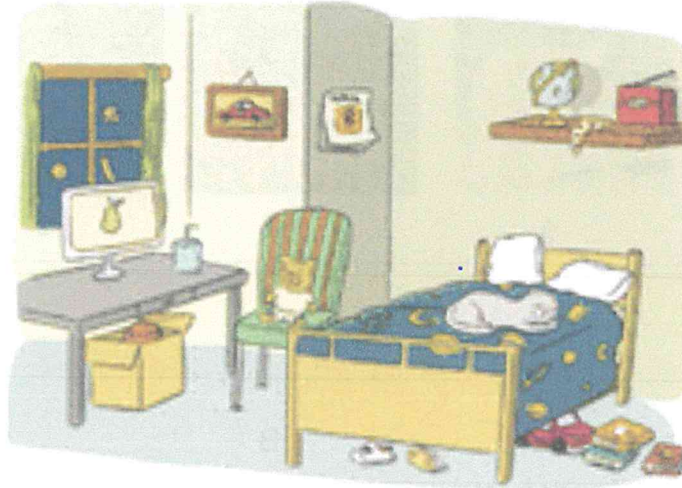


Part 2

Question

16

Study the image below and answer the following questions:



- 1- Where is the cat?
- 2- Name an object that is under the desk
- 3- Name an object that is on the chair
- 4- Where is the toy car ?

Question

17

Connect the description in the left column with its definition in the right column .

A material that is often affected by the push or pull of magnets

magnet

A region of magnetic force around a magnet

Pole

An object with a force that can attract or repel certain materials

metal

One or two ends of a magnet

magnetic field

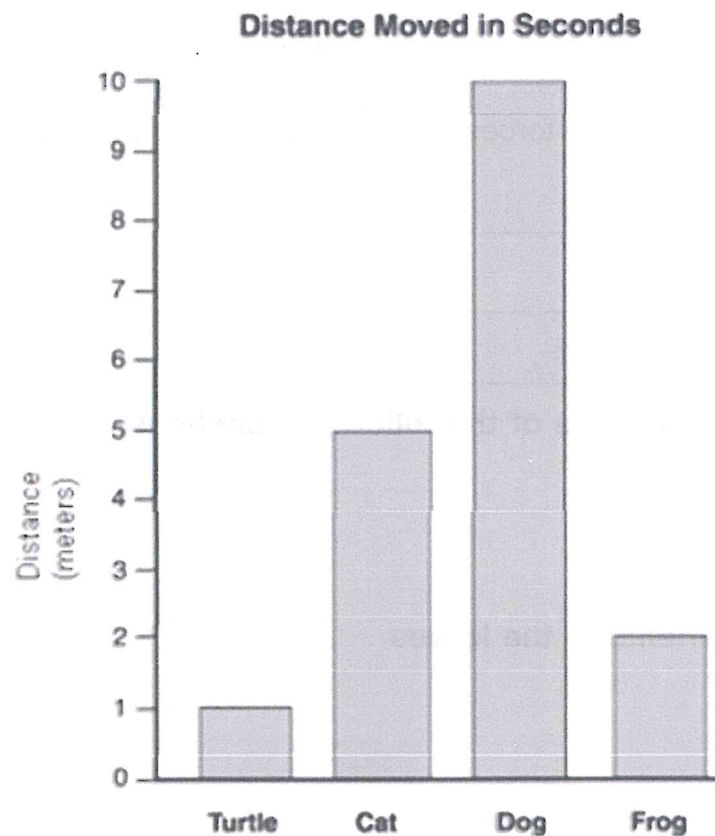


Question

18

A group of students placed four animals on a path. Each animal ran, walked or jumped down the path. After 10 seconds, the students measured the distance travelled by each animal. The results are shown in the bar graph below.

Order the animals (Turtle, Cat, Dog and Frog) from **fastest to slowest**.



1-

2-

3-

4-



Question

19

Fill in the blanks below with one of the following words:

balanced, friction, unbalanced, position

- 1– A force that happens when an object rubs another object is called
- 2– The forces that make an object move are called forces.
- 3– Motion is the process of change in an object's
- 4– forces act on an unmoving object.

Question

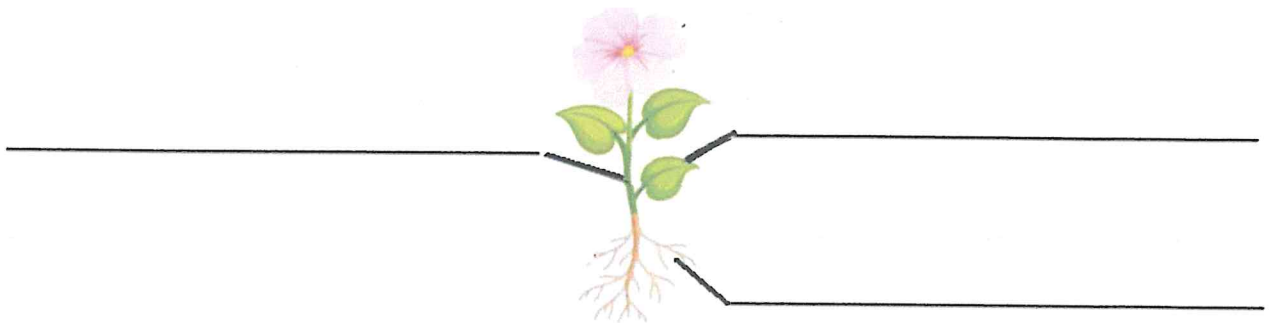
20

Label each plant part with one of the following functions:

Absorbing water

Making food

Moving dissolved nutrients to the leaves



End of questions

