

Name: 4\ //2024

Q1 & Q 12 & Q13 - U4M1L1 page 10 الأسئلة 1 و 12 و 13 من صفحة

1- Which of the following are basic need of the plants: الحاجات البت الأساسية:

a-Air b-Shelter c-Water d-home e-Sunlight f-Space g-School h- Nutrients.

2-Plants used gas (CO₂ OR O₂) to Make their food. And plants used gas (CO₂ OR O₂) to break down the food. **choose.** در غز التسجين وتاني التسيد للربون في البت.

3- Which of the following plant's structure allows gases to move in and out of the plants: ن دحل ونخرج البزات

a-Stem b-Stomata c-Root d-Flower

4- Plants use the Sunlight to (make – Take) their (home – food). **choose**

5- Which of the following plant's part can gather CO₂ & sunlight to make food: ناخذ للربون وتاني التسيد للربون

a-Roots b-Stem c- Leaves. d- Flower

6- Which of the following plant's part can take in water and absorbed nutrients from soil: ناخذ ليه ولونفالت

a-Roots b-Stem c- Leaves. d- Flower

7- Which of the following is **not** a basic need of the plants? لوس من الحاجات البت

a-Shelter b-Sunlight c-Water & space

8- Only can get energy directly from the Sun: a- Animals b- Plants c- Human.

9- Plant used energy from the Sun to make (Milk – Sugar) which provides them energy to survive. يستخدم البت ضوء الشمس لصنع ليه بالطاقة في يعيش.

10- Where do plants obtain the energy to live and grow? من اين يحصل البت على الطاقة ليعيش

a- From soil they live in. b-From oxygen in the air c-from food they produce.

11- **Look to this figures and answer:** Plam trees need (more – less) of sunlight.

But Mosses and ferns can grow in (Sunny - Shady) areas.



Q 2 & Q 5- U4M1L1 page 15 Figure page 15 سؤالين وصورة

1 Look to the seed figure, then answer:



الجنين - غلاف البذرة - غطاء الجنين
(.....) Cotyledon -- (.....) Seed coat -- (.....) Embryo.

2- Which of the following its role are protecting the new plant in the seed: نحمي البذرة

a- Embryo

b- Seed coat

c- Cotyledon

3- Which of the following its function is containing food for embryo in the seed: يخوي غطاء الجنين

a- Embryo

b- Seed coat

c- Cotyledon

4- Which of the following is the beginning of new organism in the seed (plant) : نبطي النبات (جذبه)

a- Embryo

b- Seed coat

c- Cotyledon

5- After fertilization the ovary enlarges contain seeds which become: يتكبر مبيض الزهرة بداخله البذور

a- Seed

b- Flower

c- Cone

d- Fruit

6- What properties of seeds make them good for reproduction? خصائص البذور

a- Have Seeds coat.

b- Carried new places (embryo).

c- Cotyledon (food supply).

d-All of them

7- Animals eat some of the fruits and spread the plantsin their dropping. **a- Fruit** **b- seed** **c- Roots.**



Q3 AND Q 15 U4M1L2 page 33: 33 سؤالين و 15 (من صياحة)

1- The structures found inside an organism's body: أعضاء داخلية

a- External

b- Internal

2- The structures found outside an organism's body: أعضاء خارجية

a- External

b- Internal

3- Choose the correct answer: حدد الإجابة الصحيحة

A- Choose 5 of External structure: (**Teeth- Brain – Beak – Stomach - Ears – Fur- Wings**).

B- Choose 4 of Internal structure: (**Brain – claws – Stomach – Skin- heart – Shell – lungs**).

4- The shark's teeth and a bird's beak are examples of: أمثلة على أعضاء

a-External structures

b-Internal structures

c-Behavioral adaptations

5- Which of the following structure **not used** to help animals stay safe? الـ تستخدم لبناء الحيوان بأمان

a- Strong jaws

b-Lungs

c-Shells

d-Scales

6- Which is structural adaptation used to help animals move? تستخدم للحركة الحيوان

a- Lungs

b- Fur

c-Wings

d- Gills

7- Why do bears have sharp claws? لماذا لدى الطيور مناقير ومخالب

a-To help them smell their food. b-to help

them catch their food.

c-to help them see their food.

8- Which feature do all birds have in common? **Select all that apply** جميع مميزات الطيور لدى كل الطيور

a-Beaks

b-Feathers

c- Teeth

d-Wings

9- Why bird's beak and claws are different? Because of: لماذا تختلف مناقير و مخالب الطيور

a-Birds eat different food.

b-Birds live in different place

c-Birds are strong.

10-Look to this figure then answer correctly:

A- Which number represents the shape of foot that helps bird to swim?

a- 1

b-2

c-3

d- 4

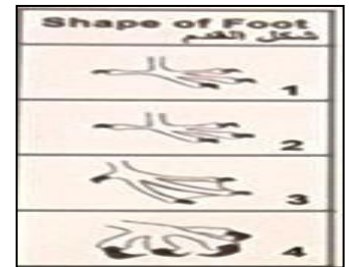
B-Which number represents the shape of foot that helps bird to catch prey?

a- 1

b-2

c-3

d- 4



O 4- U4M2L2 page 79:

1-Which of the following best defines the bouncing of the light wave off a surface?

a-Reflection

b-Refraction

c- Image

d- Lenses



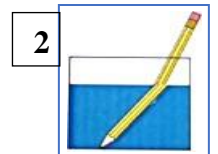
2- Which of the following best defines the bending of the light wave as it changes angles passing from one substance to another?

a-Reflection

b-Refraction

c- Image

d- Lenses



Write number in blank:	1	2	3	4
Name	3- Concave Lens عدسة مقعرة (.....) 5- Magnifying glass مكبرة (.....)		4- Mirror مرآة (.....) 6- Convex Lens محدبة (.....)	

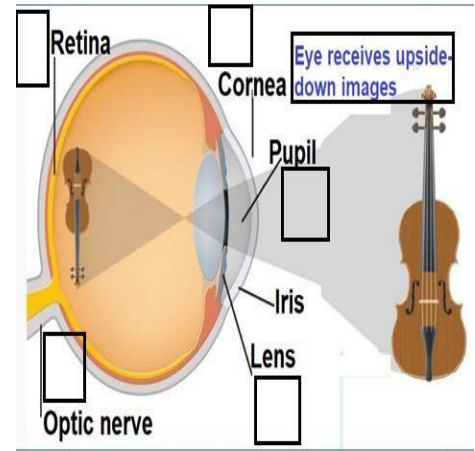
3-Circle the correct answer to complete the table below:

Lens	a-Concave b-Convex	a-Concave b-Convex	a-Concave b-Flat
Shape			
Light path	a-Spreads outward b-focus point.	a-Spreads outward b-focus point.	a- Focus point b- Shift little (not change).
Using	a-Nearsighted- Not see faraway. b-Farsighted Not see up close. طول النظر	a-Nearsighted Not see faraway. قصر النظر b-Farsighted Not see near close	

Q 6 & Q19- U4M2L2 page 80- Figure page 80 سؤالين وصورة

Q1: Choose the correct eye part then Put the number of eye's part on the image:

- 1- The First eye part allows the light to enter.
- 2- The allowed the light to enter inside the eye.
- 3- The refract the light to hit inside the eye.
- 4- The were image form, send a signal to the brain.
- 5- The carry signal to the brain.
- 6- The interprets the signal as image.
- 7- The eye receives image which
- 8- Human eyes can see when: رؤية العين البشرية



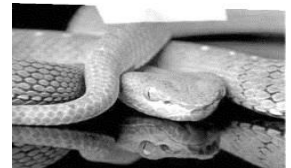
- a- Light reflect off an object to the eyes. b- Light refract from an object to the eyes.
- 9- The lens inside the eyes will the light to hit the retina: a-Reflect b- Refract.
- 10- The figure below shows the human eye. Which of following is the correct path that light passes through? ما هو المسار الصحيح لمرور الضوء في العين؟

a-Cornea – Pupil – Lens – Retina.

b- Pupil – Cornea – Lens – Retina.

Q 7 U4M2L1 page 63 and Figure:

- 1- Pit vipers and most snake have to detect infrared light given by their preys to hunt them: لدى الفاعلي يكشف الأشعة تحت الحمراء الصاردة عن فرائدها ليتمكن من صيدهم



a- Echolocation

b-Heat sensitive part

c- Antennae

- 2- Which of the following that duck-billed platypus used its bill to detect ... from animals in water: حيوان خلد الماء أو دؤار البط يستخدم دؤاره للكشف عن اصوات عن الحيوانات في الماء

a- Echolocation

b-Weak electric field

c- Antennae

- 3- Which of the following best defines the process of finding an object by using reflected sound or echoes? ما هو التعرف الصحيح على كائن باستخدام اصوات المرعكس او الصدى

a- Hearing

b-Vision

c- Smell

d- Echolocation

- 4- Select all animals used the echolocation: حدد الحيوانات التي تستخدم تحديد الموقع بالصدى

a- Bats

b- Shark

c-Dolphen

d- Ants

e- Whales.

Q 8: U4M2L1 page 64

- 1- Which of following best define the process of recognizing and interpreting stimulus?

a- Perception ادراك

b- Reflex رد الفعل

c- Respond استجابة

d- Action.الدفع

- 2- Which of the following the system that is made up from brain and spinal cord: دماغ وجبل شوكي

a- Peripheral nerve

c- Central nervous system

d-Digestive system.

3- Which of the following is the organs that uses information from senses to control all body:

- a- **Central Nervous System** b- **Nervous System** c- **Brain**

4- Which of the following is Organ that interprets, explain massages received from and sends massages to other body:

- a- **Spinal cord** b- **Eyes** c- **Brain.**

5- Which of the following is thick band of nerves inside spine, moves information to and from the brain and peripheral nerves:

- a- **Spinal cord** b- **Eyes** c- **Brain**

6- Which of the following nerves outside CNS that receives sensory information from other parts of body:

- a- **Nervous System** e- **Peripheral Nerves**

7- Something in the environment that causes a living thing to respond: شيء يسبب الرد على شيء

- a- **Reflex** b- **Stimulus** c- **Brain** d- **Perception**

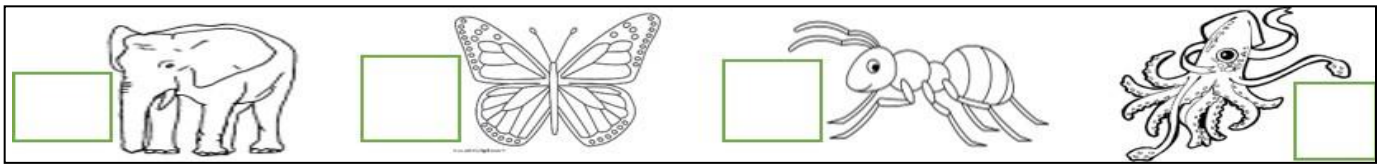
Q9- U4M2L1 page 62

Q: Choose the correct answer for each one:

1- Organs gather, collect information from outside animal's body: أعضاء تجمع المعلومات من خارج الجسم.

- a- **Heart** b- **Sensory organs** c- **Stomach** d- **Brain**

2: Put the correct number of sentences near each animal have this sense



1- **Small by antennae.** شم بؤرون الـشعار

2- **Taste by feet.** تذوق بالقدم

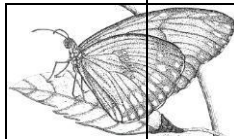
3- **Have biggest ears.** لديها أكبر اذن

4- **Have largest eyes.** لديها أكبر عين

3a- What do butterflies use to test leaves before laying their eggs? ماذا تستخدم الفراشة الذوق

الورق قبل وضع البيض

- a- **The feet** b- **The nose**
c- **The antenna** d- **The wing.**



3b- What do butterflies use to get food from flower and fruits? تستخدم الفراشة الفم للرحيق

خرطوم.

- a- **The proboscis.**
b- **The nose** c- **The antenna**
d- **The wing.**

4- The figure shows an ant detecting a smell. What do ants use to detect a smell? ماذا تستخدم النمل الحاسة الرائحة؟

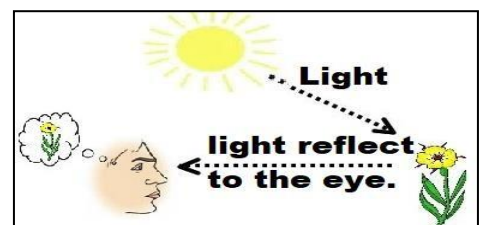
- a- **The antennae** b- **The nose** c- **The legs** d- **The head**



Q 10 U4M2L2 page 78

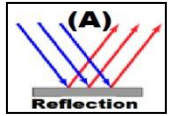
1- We can see object when the lightfrom it to our eyes:

- a- **Refract** b- **Reflect** c- **Passing.**



2-We see objects when... bounces off of the object's surface: **a-Light** **b- Sound**

4-A "picture" that light rays make by bouncing off objects: **a-Refracton** **b- Image**



5-Law of Reflection Is the Incoming angle Outcoming angle: **a-equal** **b- Not equal**

Q11 U4M2L2 page 83

1- : Join the passion of eye to the kind of animals.

1-Eyes on front of their head. عيون في مقدمة الرأس.

2-Eyes can see in the dark. يرى في الظلام.

3- Eyes can see on far distance. يرى على مسافة كبيرة.

4- Have compound eyes. عيون مركبة.

5-Eyes on top of head. عيون اعلى الرأس.

6-Eyes on side of their head. عيون على جانبي الرأس.

A-(.....) Frog

B-(.....) Owl

C-(.....) Eagle

D-(.....) Pray فرايس

E-(.....) Flies & Bees

F-(.....) Predators منسرات

G-(.....) Fish.

2-Which of the following best describe why predators have eyes on the front of their head:

a- To see danger coming from the side.

b- to see how far away something.

3-Which of the following best describe why prey have eyes on the side of their head:

a- To see danger coming from the side.

b- to see how far away something.

4-Which of the following best describe why fish have eyes on the side of their head:

a- To see movement underwater.

b- to see how far away something.

5-All insects have compound eyes. Each eye has thousands of lenses to detect danger

coming from: إلى انحشرت عيون مركبة به الف الحشرات التي تلاحظ الخطر

a- One side

b-All direction.

Q 12 and 13 with Q 1 Up U4M1L1 page 10 - 10 سبق ويتم عرض أسئلة صراحة

Q14 U4M1L1 page 16:

أي من التالي يحدد البصائر أو السلوك الجاهلي الذي يساعد الكائن الحي على البقاء على قيد الحياة؟

1-Which of following best define the physical trait or behavior that helps on organism to survive?

a- Habitat

b-Adaptation

c- Response

d- Stimulus

2-Which of following best explain why cacti have dense shallow roots? لماذا جذور الصبار ضحلة؟

a-To store water

b- to soak up rain quickly

c-To drain excess water.

3- Which is adaptation used by this plant to survive in a hot, dry environment?

a-Thick stems to hold water

b-Deep roots to soak up the rain.

4-Why do plants found in hot, dry areas often have smaller leaves than plants

found in warm, wet areas? لماذا نباتات المناطق الحارة والجافة أوراقها أصغر من نباتات المناطق الدافئة الرطبة؟

a-Smaller leaves allow plants to grow in smaller spaces. الأوراق الصغيرة تسمح للنباتات بالنمو في مكان أصغر.

b- Smaller leaves limit the amount of transpiration that occurs. الأوراق الصغيرة تحد وتقلل من النتح.



5- Plants adaptations structures to defend themselves from animals: **شجيرات تزخيف للنبات ضد الحيوانات**

a-Thorns b-Chemicals c- Poisons d- All of them

6- Orchid plant have Special aerial (**Stem OR Roots**) to absorb nutrients and anchor plant high in a tree. AND (**Flowers OR Leaves**) shaped to drain excess rain to prevent rotting. **مميزات نبات الرليفة**

Q 15 AND Q3 U4M1L2 page 33: 33 (من صفحة 15)

Written questions – F R Q – الأسئلة الحقة الية الكتابية

Q 16 U4M1L1 page 29: Put the correct number of the animals organ near its function:

ضع الرقم الصحيح لعضو الحيوان بجوار وظيفته الصحيحة

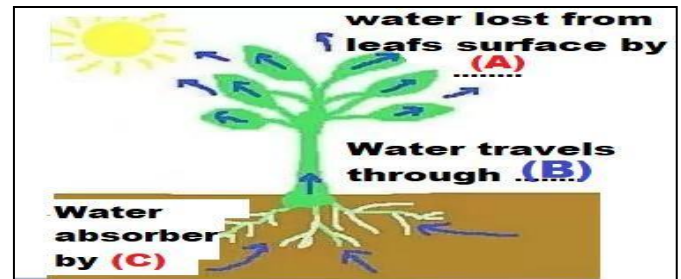
Structure العضو	Possible Function الوظيفة	Structure العضو	Possible Function الوظيفة
1- Teeth لسان	(.) Defense الدفاع عن النفس	5-Brain دماغ	(. ...) exchange gases
2- Eyes عيون	(.) Protection الحماية	6- Lungs رئة	(. ...) process information
3- Claws مخالب	(.) Break down food تكسير الطعام	7- Stomach معدة	(. ...) eliminate waste
4-Scales جرشف	(.) Find prey إيجاد فريسة	8-Kidney كلية	(. ...) digest food

Q 17: U4M1L1 page 12

1-Use the adjacent figure to answer questions:

A-Label the letters **حدد الحروف**

- Letter (A) Letter (B)
- Letter (C)



B- What are the two types of stems? **ما هي نوعي الجذع أو الساق؟**

- Type 1 is Type 2 is

2-The adjacent figure shows the sunflower plant parts, **نظروا بصورة نبات**

A-Which **letter takes in water** and from the soil?

B- Label letter (A) **حدد حرف (A)**

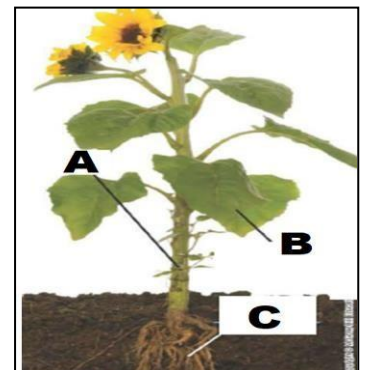
C- The plant releases water vapor through the small opening in the underside of leaves. This process is called

ج- ما هو اسم عملية اخراج الماء من فتحة صغيرة في أسفل ورقة النبات.

3-Which is **supporting the plant** and **transport materials** inside the plant?

4- Which can **make most of the plant's food**

5-Which can **hold the plant** and **take in water** and nutrients from the soil?



سؤال و صورة Q 18 U4M2L2 page 81 -- Figure page 81

1- The figure shows 3 different materials that light passes through.



1-Which letter represents a material that let all light through so objects on the other side can be clearly?

Give example: مثال

2- Which letter represents a material that let some light through so objects on the other side appear blurry? لاني يهبل البه لاني نسح ابعض الضوء بامور وثقون اصوره ضبابه على الجاب الآخر

Give example: مثال

3- Which letter represents a material that completely block the light from passing through?

ما هو الحرف الذي يمثل اللمبة التي تضيء نعلماً من الأبرار

Give example: مثال

تم عرضه مع سؤال Q 6 UP 6 Figure page 80 explain before with Q 6 UP 6

Q 20 U4M2L1 page 65 -- Figure page 65

1- Is a quick reaction that happens without a message from the brain: رد فعل سريع جدا بدون تفكير من الدماغ

a- Reflex

b- Stimulus

c-Brain

d-Perception

2- Part of the central nervous system which responsible of the reflex: من البصيرول عن رد الفعل المركزي

a- Reflex

b- Stimulus

c-Brain

d-Spinal cord

3-An action or movement of the body that happens automatically as a reaction to something: رد فعل

a- Reflex

b- Stimulus

c-Brain

d-Perception

Q4 - The adjacent figure shows the nervous system.

1-Label letter (A)..... حدد حرف أ

2- Which letter represent a thick band of nervous inside the spine? ما

..... ما هو الحرف الذي يمثل جزء من العصب داخل العود الفقري

3-What are the two parts of the nervous system؟

4 - In this figure the letter (.....) is the brain- the letter (.....) is the spinal cord – the letter (.....) is the peripheral nerves.

