



مؤسسة الإمارات للتعليم المدرسي
EMIRATES SCHOOLS ESTABLISHMENT

Day
3

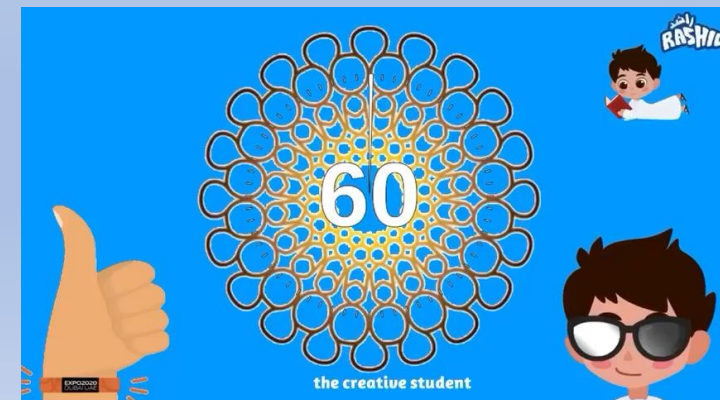


Attendance

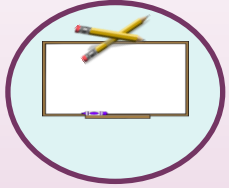


Write in
meeting chat.

HOW ARE YOU?



Distance learning and cybersecurity rules & Covid safety



أجهز كتبتي وأدواتي
المدرسية

**Prepare books
and school
supplies**



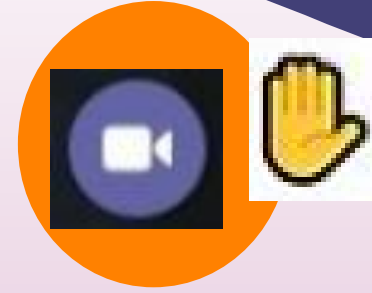
أجلس في مكان هادئ
**Sit in a
quiet place**



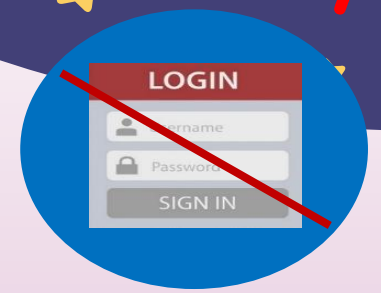
ارتداء الزي المدرسي
**Wear school
uniform**



الالتزام بوقت
الحصة
**Be ready
and on
time**



افتح الكاميرا عندما تطلب المعلمة
**Open your
cameras & raise
your hand**



لا أشارك بيانات حسابي
**Don't share
account
information**

لسلامتك وسلامة الآخرين

For your safety & the safety of others



غسل اليدين بالماء والصابون
**Wash hands with
soap and water**



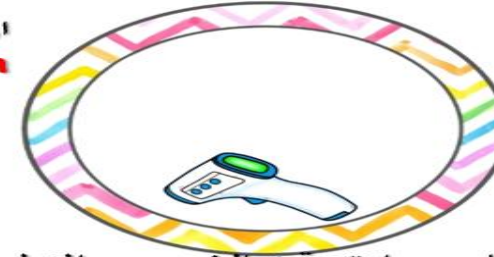
ارتداء القناع عند الخروج من المنزل
**Wear a mask when
going outside**



أحافظ على التباعد الجسدي
**Keep physical
distancing**

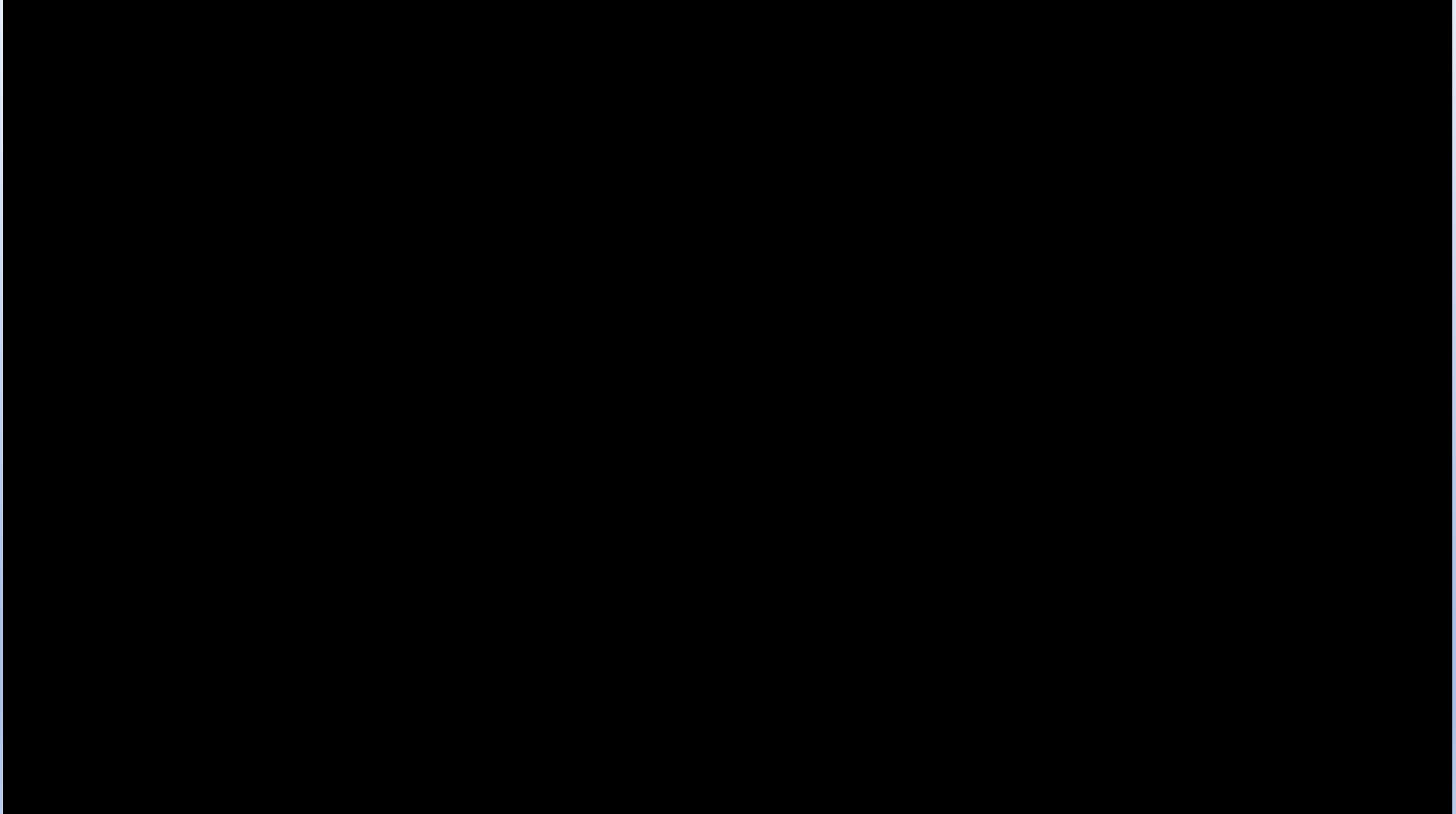


استخدام المعقم
Use sterilizer



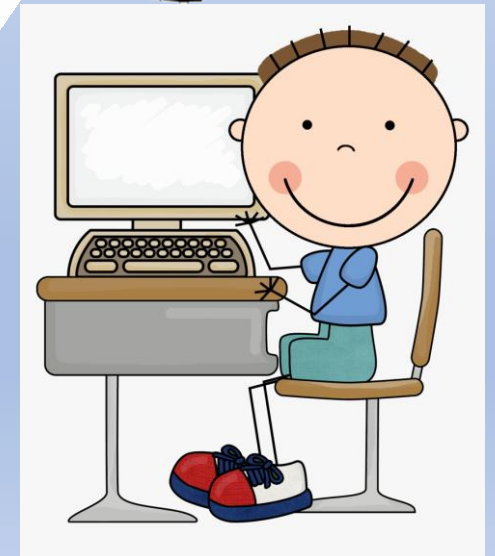
قياس حرارتي قبل الخروج من المنزل
Take your temperature before leaving the house

Distance Learning & Cybersecurity Rules



Al Diwan
<https://elib.moe.gov.ae/App>

You will need:



COVID-19 (also known as Coronavirus)

What you can do



Avoid close contact with people who are sick



Avoid touching your eyes, nose, and mouth



Stay home when you are sick



Cover your cough or sneeze with a tissue



Clean and disinfect frequently touched objects



Wash your hands often with soap and water for at least 20 seconds



مؤسسة الإمارات للتعليم المدرسي
EMIRATES SCHOOLS ESTABLISHMENT

Term 1
Week 10



Quick changes to Earth's Landscape





Quick changes to Earth's Landscape

To understand and explain flood and its effect on the land.



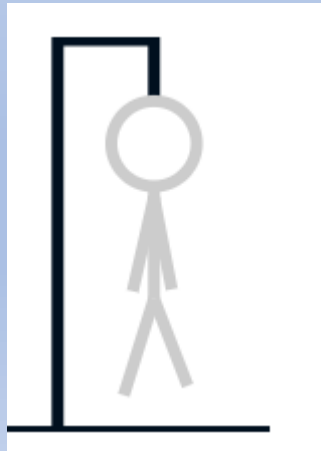


مؤسسة الإمارات للتعليم المدرسي
EMIRATES SCHOOLS ESTABLISHMENT

guess the



<https://www.hangmanwords.com/play/custom?g=Vm9sY2Fu&bw==>



Vocabulary

**LET'S
LEARN**

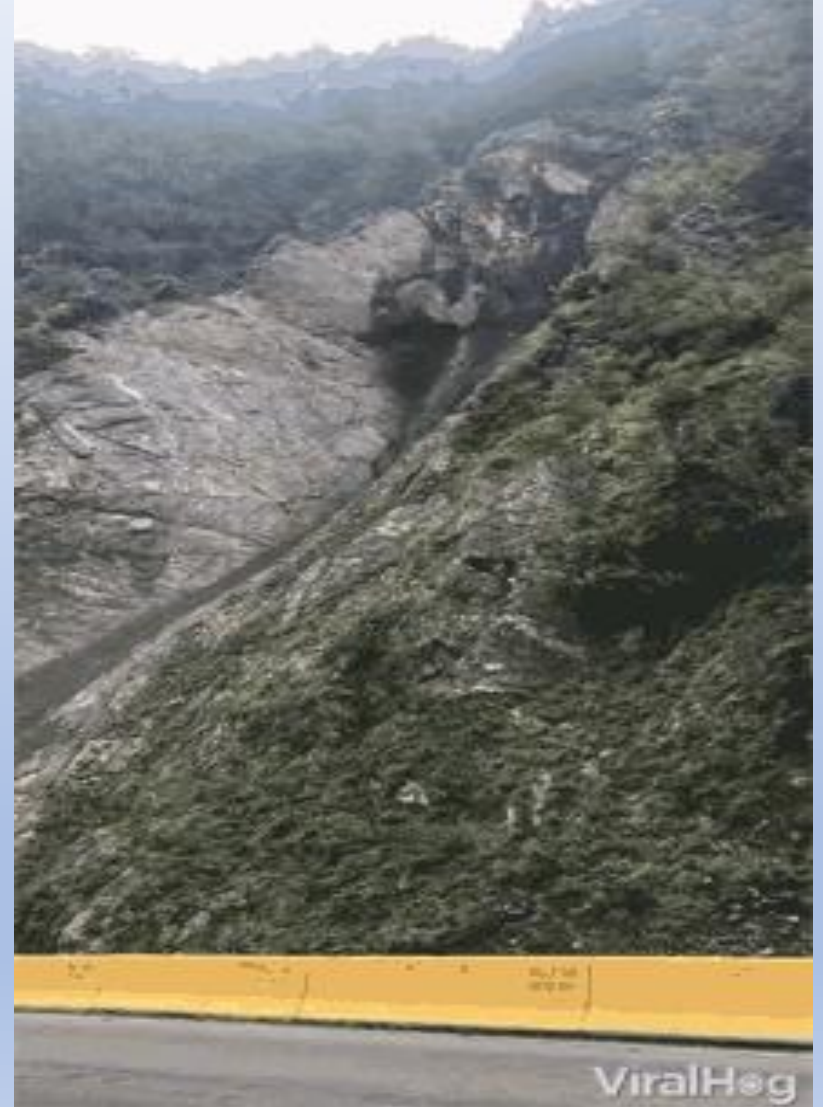




مؤسسة الإمارات للتعليم المدرسي
EMIRATES SCHOOLS ESTABLISHMENT

Landslide

انزلاق أرضي



Volcano

بركان



Flood

ففيضان



Let's watch a video to learn how floods change the landscape?:

<https://www.tigtagworld.com/film/embed/floods-PRM00733/>
height="445" width="515" frameborder="0" webkitAllowFullScreen
mozallowfullscreen allowFullScreen ></iframe>





To understand and explain flood and its effect on the land.

Floods

Another event that causes quick changes is a flood. A flood can happen when a lot of rain falls quickly. The rain cannot soak into the ground. Water from a flood can wear away rocks and soil. Floods make it hard for plants and animals to live.





To explore what will happen to the landscape if a volcano erupts.

1. What effect might a flood have on a farm?

It will be hard for plants to grow.

2. Write a caption for the photo below.

Flood is a fast change and damages house.





Assessment

Choose the image which is a volcano

A.



B.



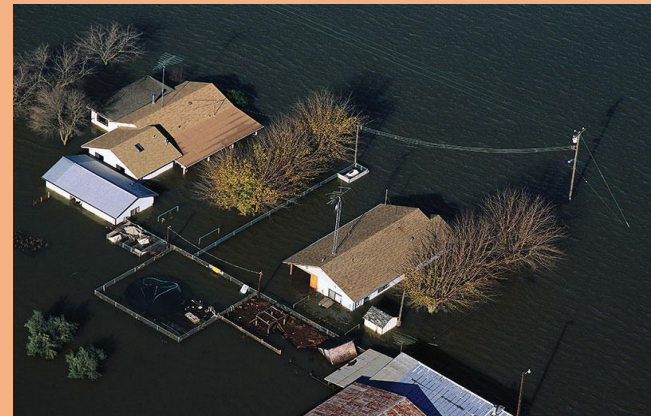
Assessment

Choose the image which showing flood.

A.



B.



Assessment

Choose the image which is a Earthquake

A.



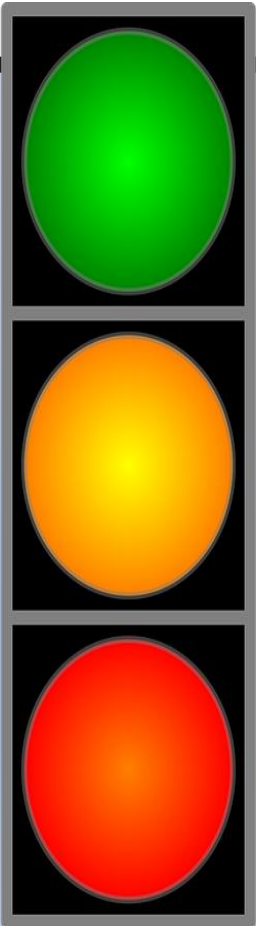
B.



Self Assessment



I know what is reflection and its
uses.



I can do It!



I am getting there



I need more help





مؤسسة الإمارات للتعليم المدرسي
EMIRATES SCHOOLS ESTABLISHMENT

To predict water and air can change land slowly.



ONLINE STUDENTS

Write the word you learnt today and choose the smiley

Date:

Name:

One word you learnt today:



I understand!



I understand
a little!



I don't
understand!

