

Science Sample Exam :

Question One : (Be a Scientist)

1.1) Which picture represents a **model** of something ?



Circle the correct answer :

1.2) Scientists find ways to *create / classify* things or put things into groups.

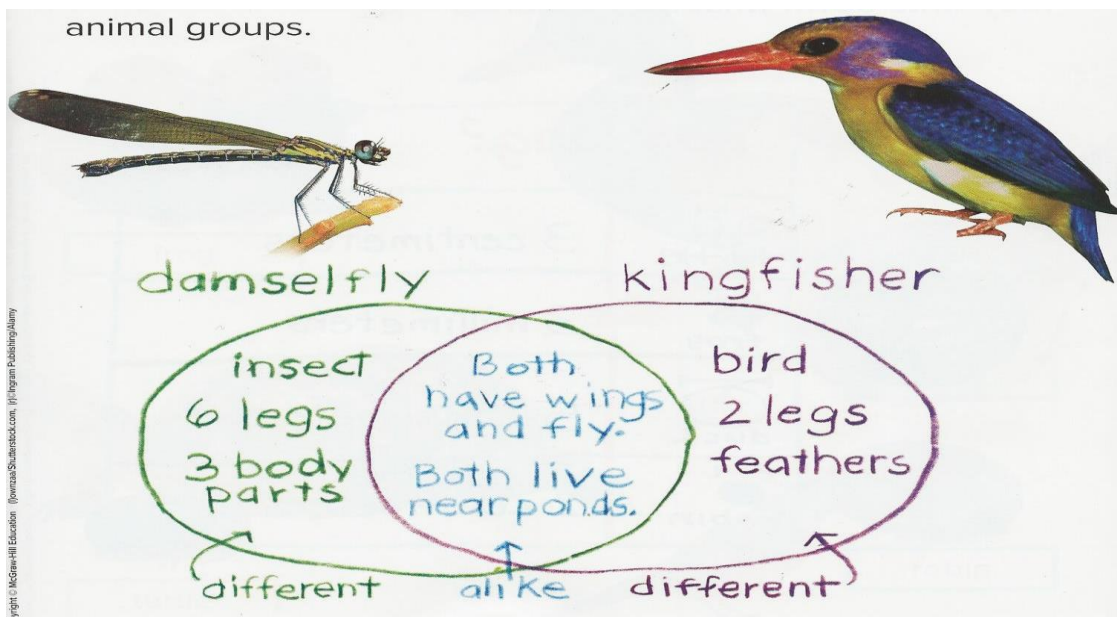
1.3) Scientists *explode / observe* , or look carefully at something.

1.4) Scientists *compare / discover* things by telling how they are alike or different .



Question Two : (What do scientists do?)

Look at the diagram below :



2.1) What is the **same** about these two animals?

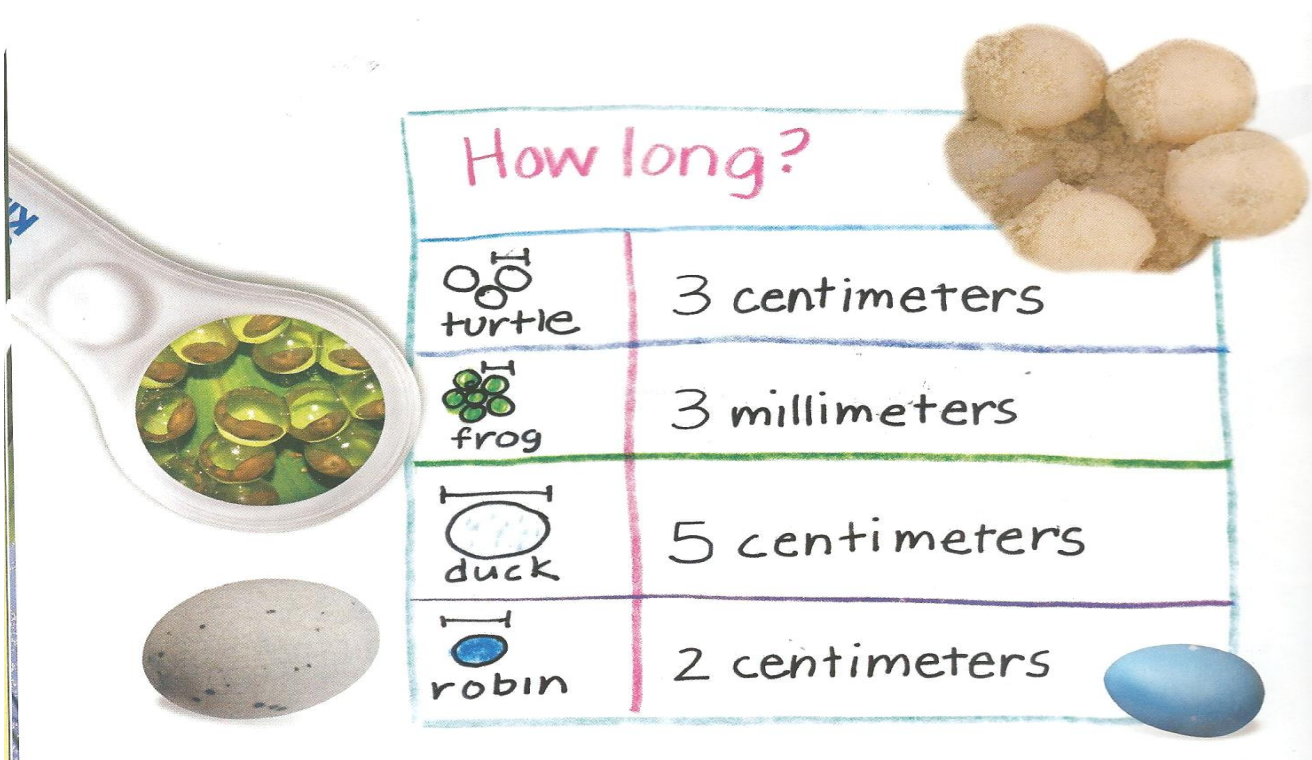
- a) One is a bird, one is an insect.
- b) One has 2 legs and one has 6 legs.
- c) Both have wings and can fly.

2.2) What is **different** about the two animals ?

- a) Both live near ponds.
- b) One has 3 body parts and one has feathers.
- c) One is a bird and one is an insect.

QUESTION THREE : (How do scientists work ?)

Look at the diagram below and answer the questions that follow :

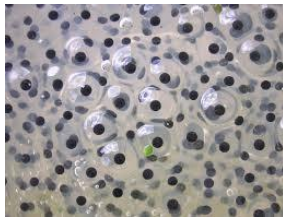


3.1) Which animal has the largest eggs ?

3.2) Which animal has the smallest eggs ?

3.3) What colour is the robin's eggs ?

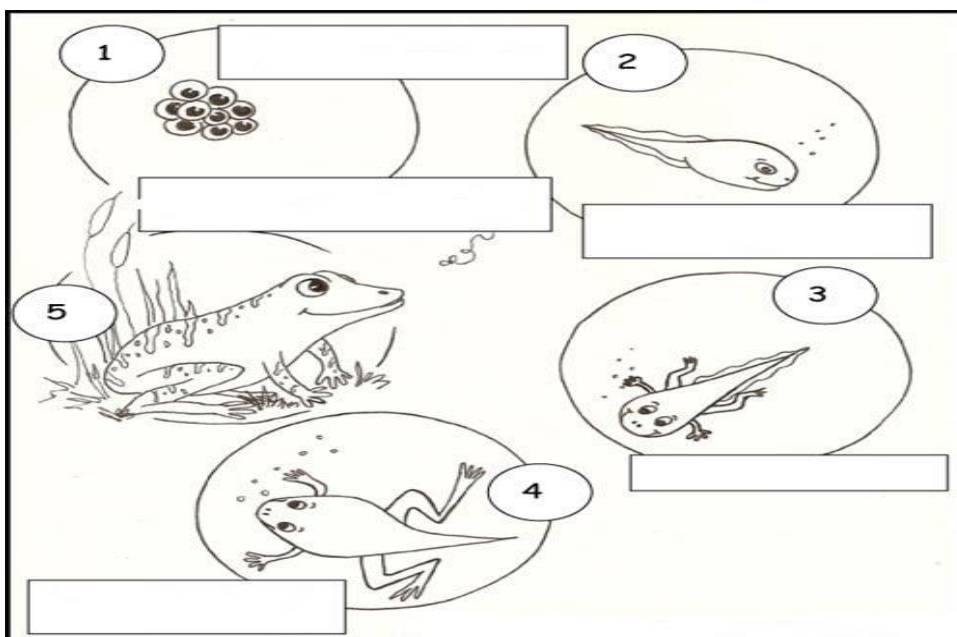
3.4) Match the animals with their eggs : (Draw lines)



QUESTION FOUR : (How do scientists learn new things ?)

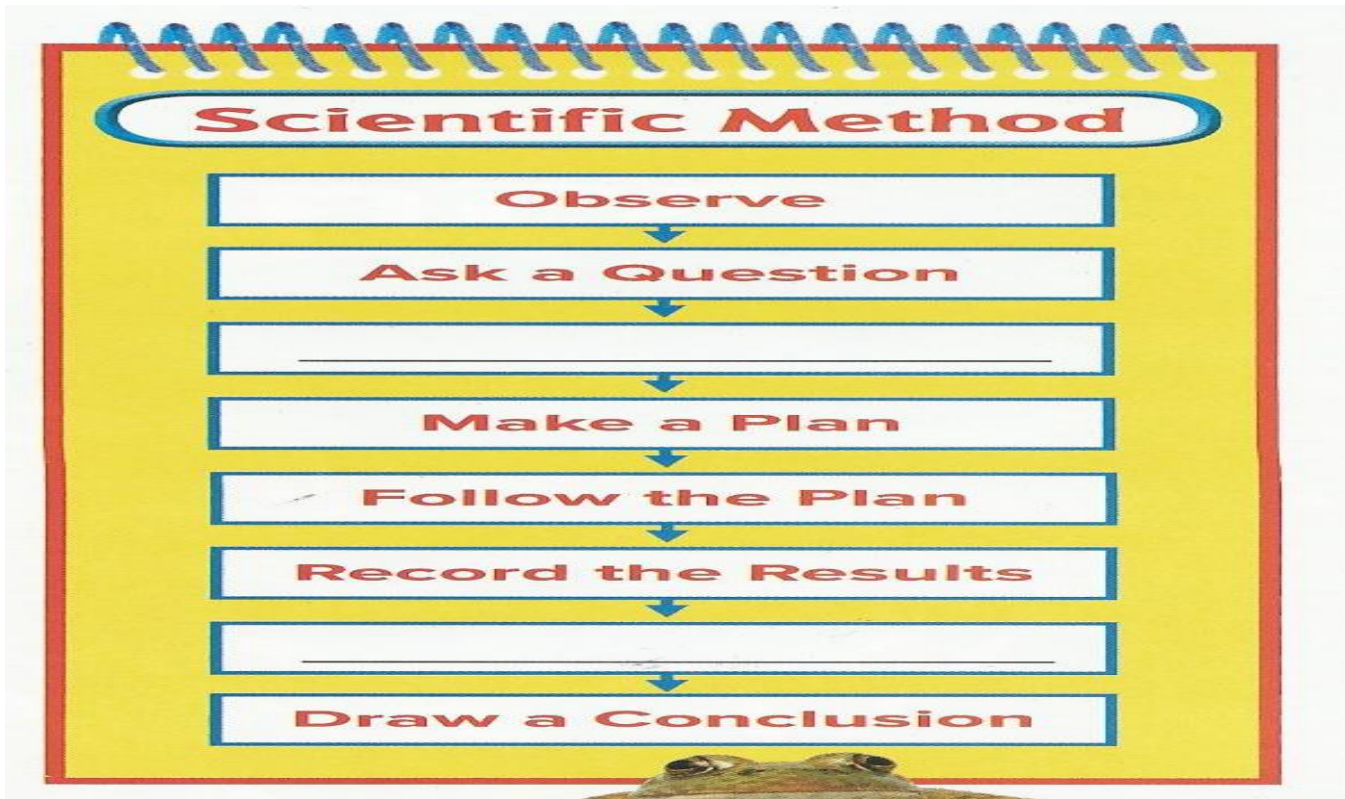
Label the life cycle of a frog using the words below :

frog , eggs , tadpole with legs , froglet , tadpole



QUESTION FIVE : (The Scientific Method)

Write down the steps that are missing in the correct order :



a) Try the plan again .
Make a prediction.

b) Make a prediction.
Try the plan again.

QUESTION SIX : (Plants)

Use words from the box to answer the questions below :

6.1) These are both :



Leaves
Nutrients
Roots
Stems

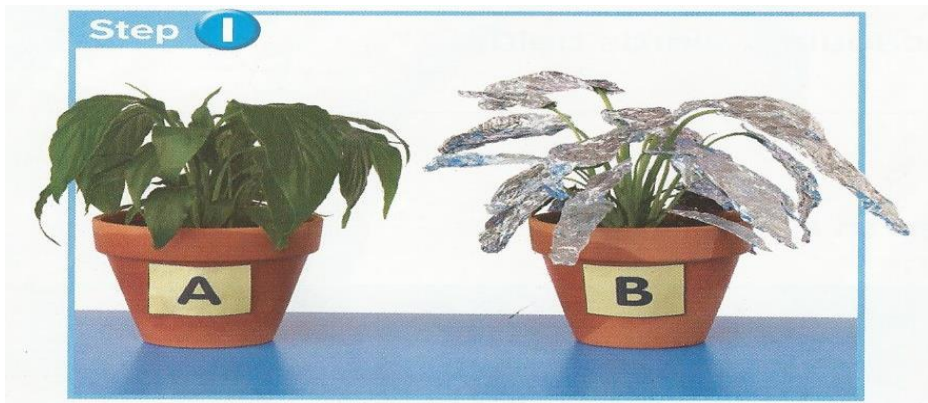
6.2) These are both :



6.3) Plants have _____ that take in water from the soil.

6.4) Plants get _____ from the soil.

6.5) Look at the picture below :



What will happen to plant B after 1 week ?

(Circle the correct alphabet)

- a) It will grow green and healthily.**
- b) It will turn light green or yellow and become dry.**
- c) It will move to where there is more sunlight.**

6.6) How are plants different from other living things ?

- a) They use sunlight to make their own food.**
- b) They need air to grow.**
- c) They need water to survive.**

6.7) Look at the picture below :

A young daffodil plant will have the same root system, stem, leaf form, and flower color as its parents.



The picture explains what are :

- a) plants
- b) traits
- c) parents

6.8) Which plant lives in a dry place ? (Circle the correct answer)



QUESTION SEVEN :

Match the picture with the correct stage in the butterfly life cycle :

Match the picture with the correct stage of the butterfly life cycle.



☐ Caterpillar



☐ Egg



☐ Butterfly



☐ Chrysalis

SECTION B :

QUESTION ONE : (Remember)

Read each question and circle the correct answer :

1.1) An insect has _____ to keep it safe :

- a) a hard, outer shell
- b) a soft body
- c) fur

1.2) Butterflies begin life as :

- a) larva
- b) eggs
- c) pupa

1.3) What do babies do ?

- a) They go to work
- b) They cry
- c) They drive cars

1.4) Baby pandas are born :

- a) blind
- b) in an egg
- c) under water

1.5) How an animal grows and changes is called its :

- a) adaptation
- b) life cycle
- c) camouflage

QUESTION TWO : (Understand)

Look at the pictures.



Spider



jellyfish



worm



dragonfly



butterfly

2.1) Write down one example of an invertebrate that lives in the ocean: _____

2.2) Write down one example of an arachnid :

2.3) Write down one example of an insect :

QUESTION THREE : (Apply)

Look at the animals. Classify them by writing the name of the animal under the correct group. **Example:** horse - **Mammal**.



lizard



chicken



frog



Lion

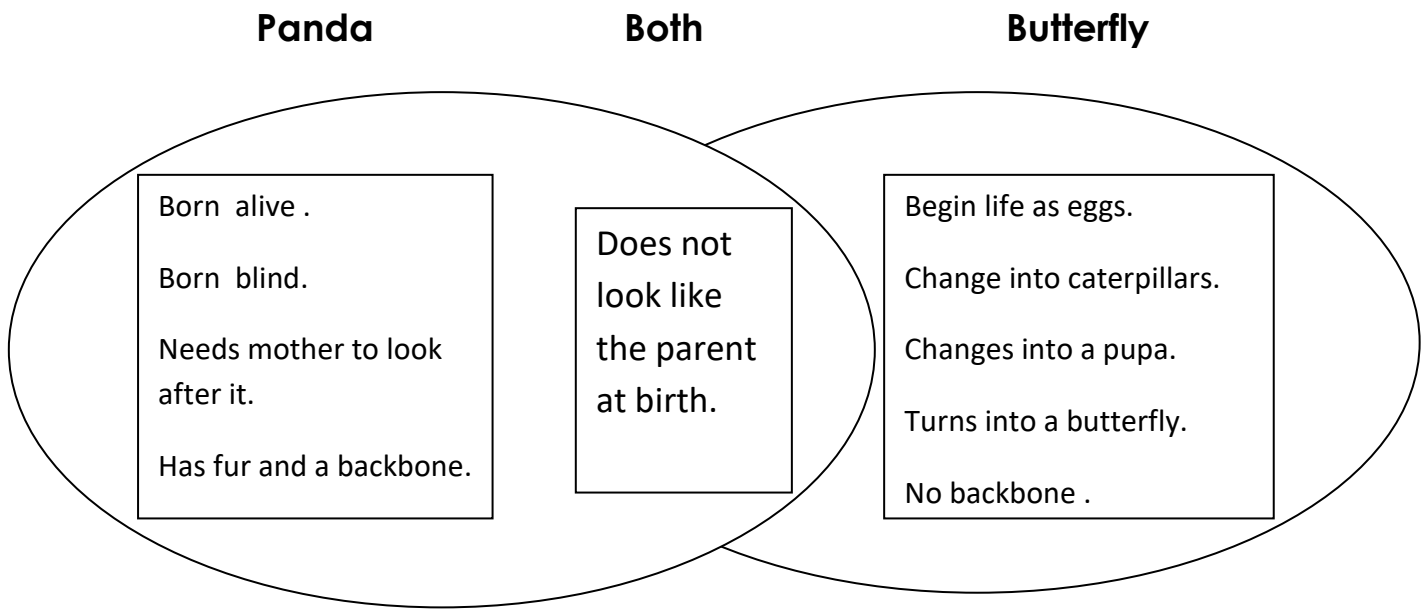


shark

Mammals	Birds	Fish	Reptiles	Amphibians

QUESTION FOUR : (Analyze)

Look at the Venn diagrams below and then answer the questions that follow :



4.1) Write down one thing that is different about the panda :

4.2) Write down one thing that is different about the butterfly :

4.3) Write down one thing that is the same about the two animals :

QUESTION FIVE : (Evaluate)

5.1) What would happen to a chicken's egg after 21 days ?

QUESTION SIX : (Create)

Design a picture to show the third stage of the chicken's life cycle.

