

Name \_\_\_\_\_

# Using a Calendar

## Lesson 8



### ESSENTIAL QUESTION ?

How do you use and tell time?



## Explore and Explain

A calendar shows **days**, **weeks**, and **months** in a **year**.

June						
Sunday	Monday	Tuesday	Wednesday	Thursday	Friday	Saturday
 3	4	5	6	7	8	9
10	11	12	13	14	15	16
17	18	19	20	21	22	
24	25	26	27	28	29	




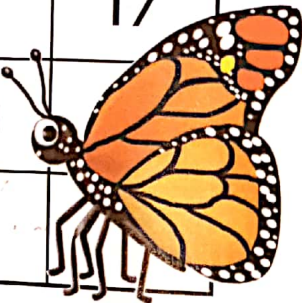
**Teacher Directions:** Point to the month in this calendar. Name the month. Name the month that comes next. Find the 8<sup>th</sup>. Color the day that comes next. Find the 23<sup>rd</sup>. Color the day that comes before.

# See and Show

## Mathematical Practices

A calendar shows **days**, **weeks**, and **months** in a **year**.

Use the calendar to answer the questions.

February						
Sunday	Monday	Tuesday	Wednesday	Thursday	Friday	Saturday
 4	5	6	7	1	2	3
11	12	13	14	15	16	17
18	19	20	21	22	23	
25	26	27	28			

1. Today is Thursday, February 8.  
Find the date 1 week ago.

Thursday, February 1

Use the calendar to answer the questions.

2. Tomorrow is Monday, February 12.  
Find the date two weeks from then.

Monday, February 26

3. What is the date of the third Saturday in February?




Saturday, February 17



Name .....

## On My Own

Use the calendar to answer the questions.

March						
Sunday	Monday	Tuesday	Wednesday	Thursday	Friday	Saturday
				1	2	3
4	5		7	8	9	10
11	12	13	14	15		17
18	19	20	21	22	23	24
25	26	27	28	29	30	31

4. What is the date before Ahmed's lunch party?

Thursday, March 15

5. Find the date that Ahmed is presenting his science project about dinosaurs.

Tuesday, March 6

6. Ahmed's lunch party is the third Friday in March. What is the date of his lunch party?

Friday, March 16



## Problem Solving

## Mathematical Practices

Use a problem solving strategy to solve the problems. Write your answer.

7. Write the days of the week in order starting with Wednesday and ending with Tuesday.

Wednesday, Thursday, Friday, Saturday,  
Sunday, Monday, Tuesday

8. Write the months in a year in order starting with January and ending with December.

January, February, March, April, May, June,  
July, August, September, October, November,  
December



Name \_\_\_\_\_

# Units of Time

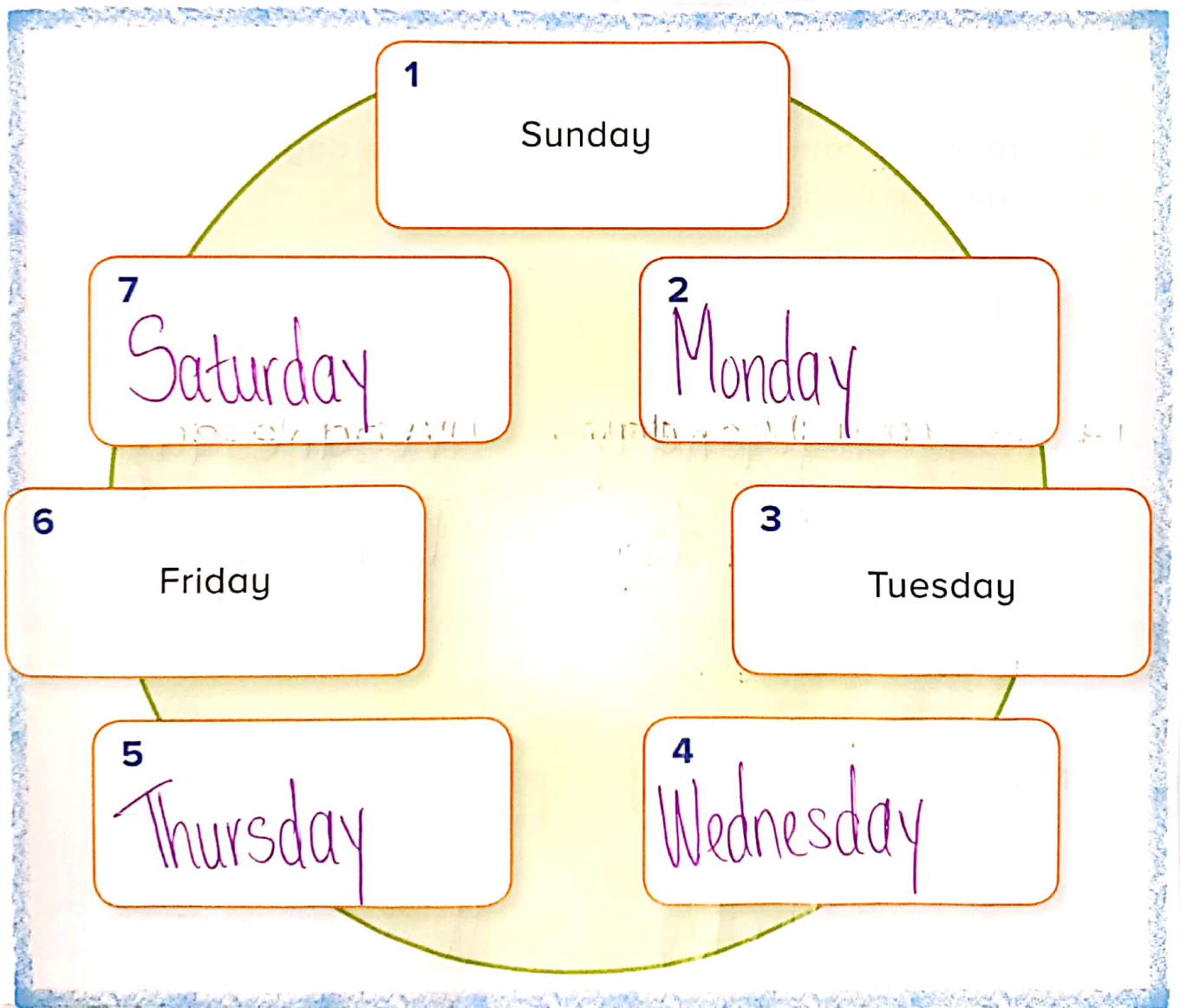
## Lesson 9

### ESSENTIAL QUESTION ?

How do you use and tell time?



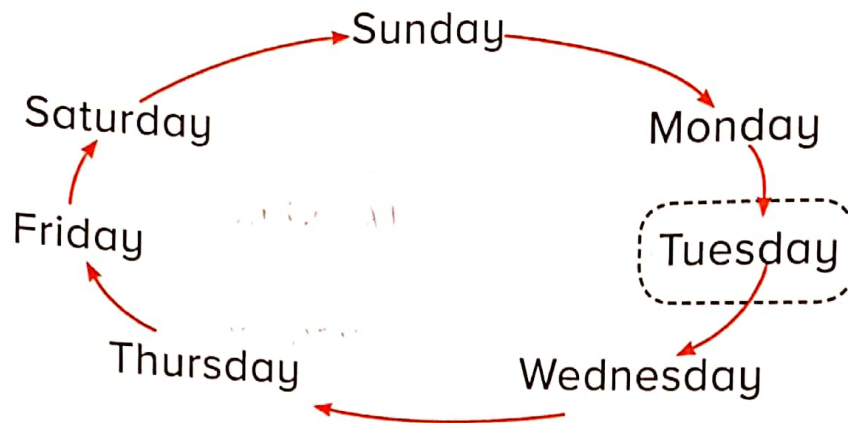
## Explore and Explain



**Teacher Directions:** Fill in the missing days.

There are seven **days** in one **week**.

What day is it today?



Use today to complete the table. Write the day it was and the day it will be.

1.

Number of Days	Day It Was	Day It Will Be
1	Monday	Wednesday
2	Sunday	Thursday

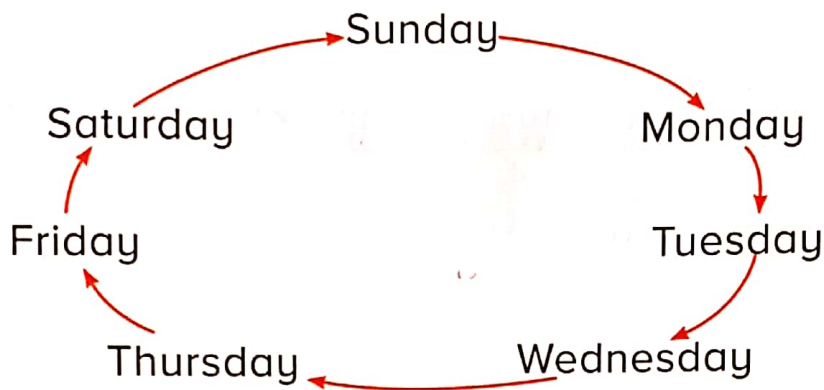
2.

Number of Days	Day It Was	Day It Will Be
8	Monday	Wednesday
9	Sunday	Thursday

Name .....

## On My Own

Use today to complete the table. Write the day it was and the day it will be.



3.

Number of Days	Day It Was	Day It Will Be
8	Monday	Wednesday
14	Tuesday	Tuesday
21	Tuesday	Tuesday
69	Wednesday	Monday
70	Tuesday	Tuesday
71	Monday	Wednesday





## Problem Solving

Use a problem solving strategy to solve the problems.  
Write your answer.

4. How many Mondays are in 35 days? Explain.

If there are five weeks in 35 days, then there could be five Mondays.

5. How many Mondays are in 70 days? Explain.

If we start on Sunday, there will be 10.



Name .....

# My Review

Chapter 9

Time

## Vocabulary Check

Complete each sentence.

hour

half hour

quarter hour

minute

A.M.

P.M.

digital

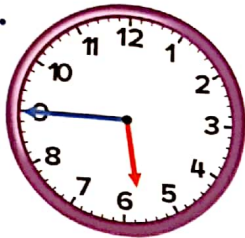
analog

1. The long hand on an analog clock is the minute hand.
2. The short hand on an analog clock is the hour hand.
3. 15 minutes is a quarter hour.
4. 30 minutes is a half hour.
5. A clock that uses hands to show the time is an analog clock.
6. A clock that uses numbers to show the time is a digital clock.
7. The hours from noon to midnight are P.M..
8. The hours from midnight to noon are A.M..

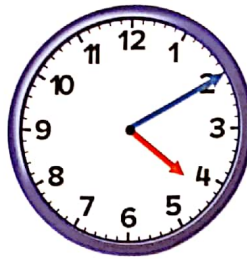
## Concept Check

Read the time. Write the time.

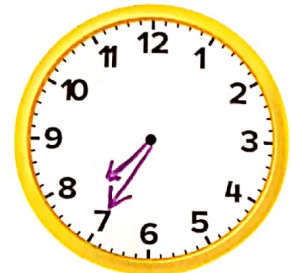
9.



10.



11.



Estimate the time for the event. Circle your answer.

12. saying hello

1 second

1 minute

1 hour

Circle the best choice.

13. Feed the goat.

10:45

A.M.

P.M.

14. Go hiking.

4:30

A.M.

P.M.

Fill in the blanks.

15. Tuesday Wednesday Thursday

16. Thursday Friday Saturday

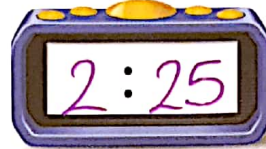
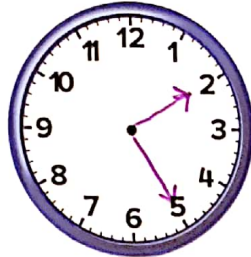


Name \_\_\_\_\_



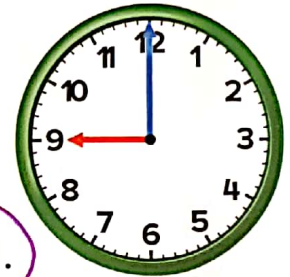
## Problem Solving

17. On a clock, the hour hand is between the 2 and 3. The minute hand is on the 5. What time is it? Show the time on both clocks.



18. The time is 9:00. In 6 hours, Ismail will leave school. What time will it be in 6 hours? Circle A.M. or P.M.

3:00 A.M. **P.M.**



19. Today is October 12. What date will it be 6 days from now?

October 18

20. Tomorrow is Monday, July 5. What day of the week and date was yesterday?

Saturday, July 3

## Test Practice

21. The boat picked up passengers every half hour. If the first boat arrives at 8:00 A.M., when will the fourth boat arrive?

12:00 P.M.



10:00 A.M.



9:30 A.M.



10:30 A.M.





# Reflect

## Chapter 9

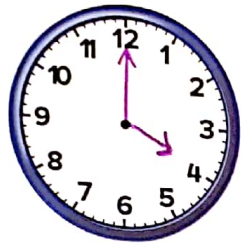
### Answering the Essential Question

Show the ways to write and use time.

Draw the hands to show the time.

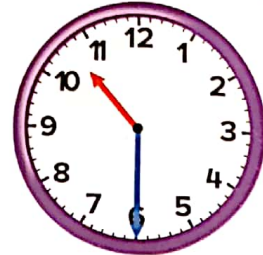


Digital



Analog

Write the time.

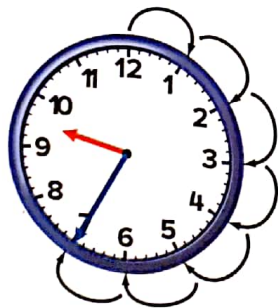


**ESSENTIAL QUESTION**



How do I use and tell time?

Skip count by 5s. Tell the time.

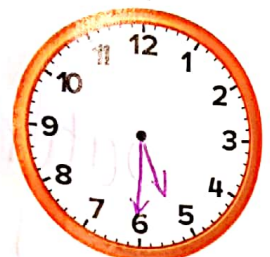
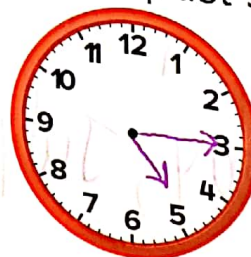


Skip count by fives.  
The time is 9:35.

Draw the hands.  
Write the time.

quarter past 5

half past 5



You'll sail through this!

