



# الأسئلة الكتابية



**EoT\_T1\_Coverage\_Grade 3**

هيكل مادة الرياضيات للصف الثالث  
الفصل الدراسي الأول

Math Teacher:

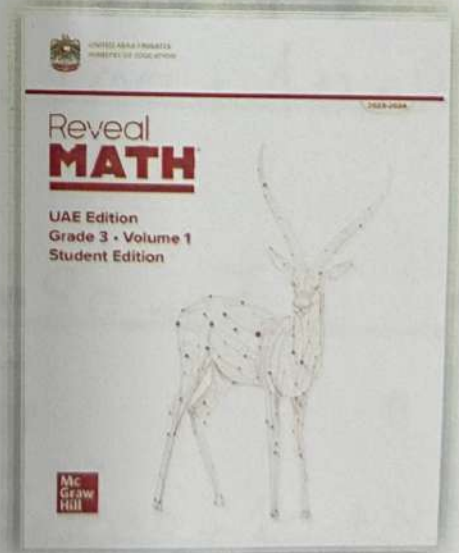
**Farida Alhammadi**



Good Luck!

School Principal :

**Bakheeta Almansoori**



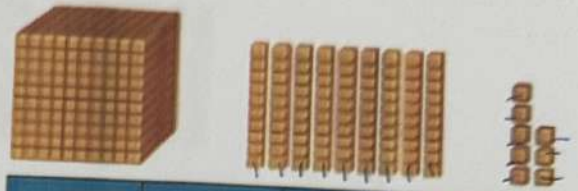
What number is represented by the base-ten blocks?

1.



thousands	hundreds	tens	ones
1	5	3	2

2.



thousands	hundreds	tens	ones
1	0	9	8

How can you represent the number in the place-value chart and in expanded form?

3. 2,446

thousands	hundreds	tens	ones
2	4	4	6

$2,000 + 400 + 40 + 6$

4. 4,729

thousands	hundreds	tens	ones
4	7	2	9

$4,000 + 700 + 20 + 9$

How can you represent the number shown in standard form and expanded form?

5. three thousand, one hundred twelve

3,112

$3,000 + 100 + 10 + 2$

6. six thousand, eighty-seven

6,087

$6,000 + 80 + 7$

7. seven thousand, two hundred twenty-four

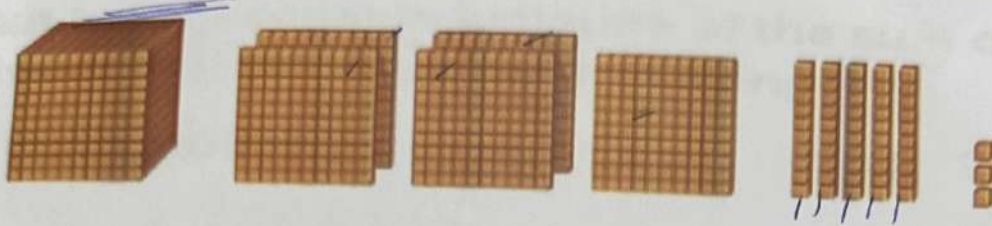
7,224

$7,000 + 200 + 20 + 4$

Learn	34
(1-7)	35
(8-12)	36

How can you represent the number shown in standard and expanded form?

8.



1,553

1,000 + 500 + 50 + 3

How can you represent the number in standard form?

9.  $8,000 + 500 + 2$

10.  $9,000 + 50 + 2$

8,502

8	5	0	2
---	---	---	---

9,052

9	0	5	2
---	---	---	---

11. **STEM Connection** 1,455 customers visited Saffron's pastry shop this month. Last month 1,355 customers came to the shop. Explain how she can use place value to determine the difference in the number of customers.



100

one hundred

$400 - 300 = 100$

$$\begin{array}{r} 1,455 \\ - 1,355 \\ \hline 0(100) \end{array}$$

12. **Extend Your Thinking** Use the digits shown to write a number with the least possible value. Write the number in standard form, expanded form, and word form.

الرقم الأقل  
~ greatest

3     8     8     2

2,388

$2000 + 300 + 80 + 8$

\* You can round to nearest 10  
or nearest 100

Page: 45

What is a reasonable estimate of the sum or difference?  
Write or draw to show your thinking.

1.  $423 + 168 = ?$

$$400 + 200 = 600$$

2.  $? = 695 - 205$

$$700 - 200 = 500$$

3.  $? = 317 + 248$

$$300 + 200 = 500$$

4.  $473 + 218 = ?$

$$500 + 200 = 700$$

5.  $798 - 307 = ?$

$$800 - 300 = 500$$

6.  $? = 835 - 466$

$$800 - 500 = 300$$

7. How can you use rounding to estimate the sum of  $389 + 223$ ?

to nearest 100

$$389 + 223$$

$$400 + 200 = 600$$

or

to nearest 10

$$389 + 223$$

$$390 + 220 = 610$$

8. A complete set of baseball cards has 678 cards.

Julio needs 273 more cards to complete his set. How can you use rounding to find about how many cards are in Julio's collection?

$$678 + 273$$

$$700 + 300$$

$$= 1,000$$

9. The Comic Book Shack displays 318 comic books near the front door and keeps 502 comic books in the storage room. How can you use compatible numbers to find about how many comic books are in the store? Round

$$\begin{array}{r} 502 + 318 \\ 500 + 300 = 800 \end{array}$$

10. **STEM Connection** Saffron's bakery needs to decorate 355 cupcakes for an event. It has decorated 223 so far. How can she determine about how many more cupcakes they need to decorate? Round

$$\begin{array}{r} 355 - 223 \\ 400 - 200 = 200 \end{array}$$



11. Melinda estimates she traveled 830 miles last Monday and Tuesday. She traveled 412 miles on Tuesday. About how many miles could she have traveled on Monday? Round

$$\begin{array}{r} 830 - 412 \\ 800 - 400 = 400 \end{array}$$

12. **Extend Your Thinking** Jason has 744 flyers to deliver. If he has delivered 62 flyers at each of his last 2 stops, about how many flyers does he have left to deliver?

1  $62 + 62$   
 $60 + 60 = 120$

2  $744 - 120$   
 $700 - 100 = 600$

\* لسؤال عن عدد التوزيع (قسمة)

How can you draw a representation and answer the question?

1. 6 dogs  
2 dogs at each water bowl  
How many water bowls?

$$6 \div 2 = 3$$

2. 8 balloons  
2 balloons for each child  
How many children?

$$8 \div 2 = 4$$

3. 10 plates  
5 plates on each table  
How many tables?

$$10 \div 5 = 2$$

4. 12 beads  
4 beads for each bracelet  
How many bracelets?

$$12 \div 4 = 3$$

Which division equation describes the representation?

- 5.

A.  $15 \div 3 = 5$

B.  $15 = 3 \div 3$

C.  $15 \div 5 = 5$

D.  $12 \div 5 = 5$

3  
5  
15

- 6.

A.  $12 \div 4 = 4$

B.  $12 = 3 \div 4$

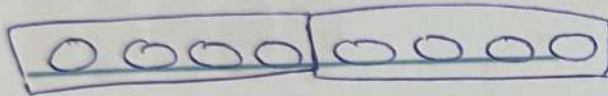
C.  $12 \div 5 = 4$

D.  $12 \div 3 = 4$

12  
3  
4

How can you write and solve an equation for the situation?

7. 8 students divided into 4 groups  $8 \div 4 = 2$



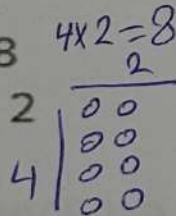
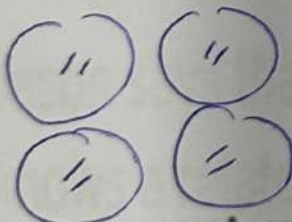
8. 10 players divided into 2 teams  $10 \div 2 = 5$



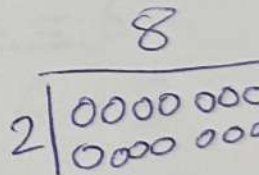
\* للرسم لرسم واحدة فقط عليهم لان الرسمة ستلون نفس السهم  
للحزب اولسمة

How can you draw an array to represent the situation?

1. 4 groups of 2 = 8  $4 \times 2 = 8$   
8 divided by 4 = 2

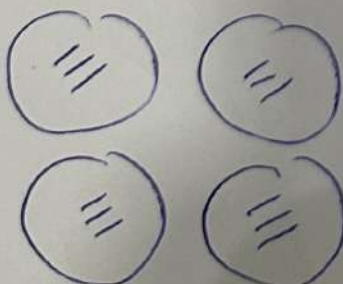


2.  $2 \times 8 = 16$   
 $16 \div 2 = 8$



How can you draw an equal group to represent the situation?

3. 4 groups of 3 = 12  $4 \times 3 = 12$   
12 divided by 4 = 3



4.  $3 \times 5 = 15$   
 $15 \div 3 = 5$

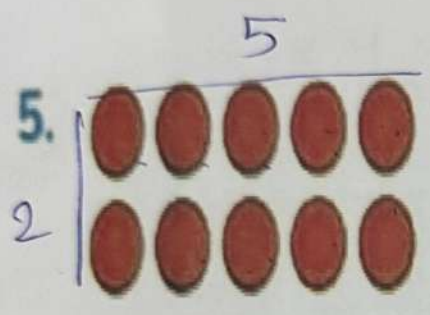


(1-8)	111
(1-7)	115
(8-12)	116

أولاً:

نصف الذرفاء [لانسوف Array في لانسوف] \* في لانسوف

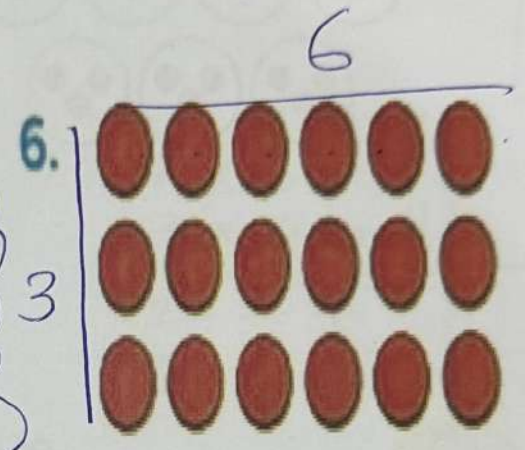
How can you write a division equation for the representation?



2 x 5 = 10

$10 \div 2 = 5$   
 $10 \div 5 = 2$

الصحة  
 داءنا  
 نبدأ  
 بالذرفاء



3 x 6 = 18

$18 \div 3 = 6$   
 $18 \div 6 = 3$

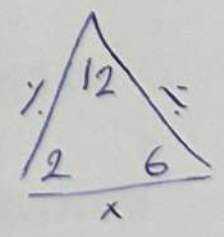
7. Jason says that because he knows  $6 \times 2 = 12$ , he also knows a related division equation. Explain why you agree or disagree.

Yes I agree

6 x 2 = 12

So,  $12 \div 6 = 2$

or  $12 \div 2 = 6$



Write a multiplication and a division equation to represent each model.



5  
4  
20

$$5 \times 4 = 20$$

$$4 \times 5 = 20$$

$$20 \div 4 = 5$$

$$20 \div 5 = 4$$



7  
3  
21

$$7 \times 3 = 21$$

$$3 \times 7 = 21$$

$$21 \div 7 = 3$$

$$21 \div 3 = 7$$

10. **STEM Connection** Finn has 245 days to complete 3 parts of a construction project. He wants to spend the same number of days on each part. How can you write a multiplication and a division equation to represent the problem? Use a ? for the unknown.

$$245 \div 3 = a$$

$$3 \times a = 245$$



11. How can <sup>زوج من</sup> 9 pairs of shoes represent a multiplication and a division equation?

$$9 \times 2 = 18$$

$$2 \times 9 = 18$$

$$18 \div 2 = 9$$

$$18 \div 9 = 2$$

12. **Extend Your Thinking** Mr. Mack gives 3 pencils to each of his students. He had 24 pencils. How can you use the multiplication equation  $8 \times 3 = 24$  to find how many students he has in class?

$$24 \div 3 = 8$$

(1-12)	149
(1-8)	153
(9-12)	154

0, 1, 2, 5, 10

How can you use what you know about multiplication to answer the question?

- Multiples of 2 and 10 are always even.
- Multiples of 10 always have a 0 in the ones place.
- The product of any number and 1 is itself. *نفسه*
- The product of any number and 0 is always 0. *دائماً صفر*

How can you complete the equation?

- $5 \times 3 = \underline{15}$       $\underline{5} \quad \underline{10} \quad \underline{15}$
- $2 \times 7 = \underline{14}$       $\begin{matrix} 7+7 \\ =14 \end{matrix}$
- $\underline{0} \times 8 = \underline{0}$
- $\underline{40} = 10 \times 4$
- $\underline{30} = 5 \times 6$
- $9 \times \underline{1} = 9$
- $\underline{5} \quad \underline{10} \quad \underline{15} \quad \underline{20} \quad \underline{25} \quad \underline{30}$

11. Felix has fewer than 10 nickels in his piggy bank. How many 5 cents might he have? Explain how you know. *أقل من 10*     *أقل من 10*  $\boxed{0 \rightarrow 9}$

0, 5, 10, 15, 20, 25, 30, 35, 40, 45

12. The Lee family buys pairs of mittens for their vacation. Can the Lee family buy 17 mittens in all? Explain.

No, because  $\frac{17}{2}$  not  $\frac{2}{10}$  product of  $\frac{2}{10}$

*Farida Alhammadi*  
**Farida Alhammadi**      $\boxed{17}$  is odd

× عدد صغیر } each  
 ÷ عدد كبير

How can you write a multiplication and division equation for the problem? Write a ? for the unknown.

1. <sup>8</sup> Eight friends share 40 apple slices. If each friend receives the same amount of apple slices, how many does each person receive?

$40 \div 8 = ?$   
 $8 \times ? = 40$   
 $? = 5$

\* توزع one by one

2. <sup>3</sup> Bobbie, Wendy, and Winston spent a total of \$21 to go to the movies. If it cost each person the same amount, how much did each person spend?

$21 \div 3 = ?$   
 $3 \times ? = 21$   
 $? = 7$

3. Jermaine ran 56 minutes over <sup>7</sup> seven days. If he ran the same amount of time each day, how many minutes did he run each day?

$56 \div 7 = ?$   
 $7 \times ? = 56$   
 $? = 8$

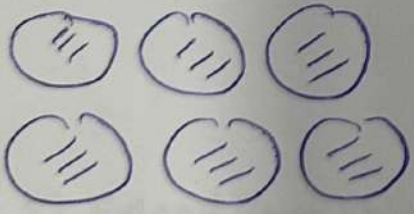
4. <sup>5</sup> June earns \$25 for working five hours. If she earns the same amount each hour, how much does she get paid per hour?

$25 \div 5 = ?$   
 $5 \times ? = 25$   
 $? = 5$

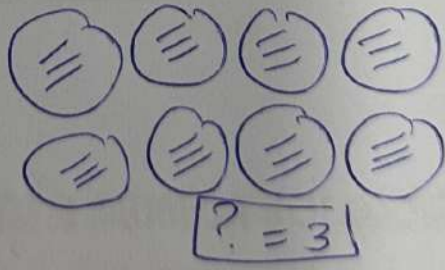
How can you draw a representation for the set of equations?

5.  $6 \times ? = 18$   
 $18 \div 6 = ?$

$? = 3$



6.  $8 \times ? = 24$   
 $24 \div 8 = ?$

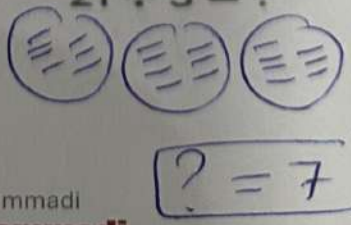


7.  $9 \times ? = 36$   
 $36 \div 9 = ?$

$? = 4$



8.  $3 \times ? = 21$   
 $21 \div 3 = ?$



$? = 7$

\* في قسم العدد المعين  
 في مجموعات  
 وتوزع  
 one by one  
 ملاكوه  
 في السؤال  
 ?

\* لما يكون رقم واحد في اطراف العدد ننسبه اما الرقم الثاني

9. Sam bought tickets to the county fair. How much did each ticket cost if each costs the same amount?  $36 \div 6 = ?$

$6 \times ? = 36$

$? = 6$



بالصور  
 أوكلة  
 السؤال

10. Carlos spends 35 minutes on homework. He spends the same amount of time on each of his 5 assignments. How long does he spend on each assignment?

$35 \div 5 = ?$   
 $5 \times ? = 35$

$? = 7$

11. **STEM Connection** It takes Grace 24 hours to write a computer program for 4 robots. If each program takes the same amount of time to write, how long does it take Grace to write one program? Explain.

$24 \div 4 = ?$   
 $4 \times ? = 24$

$? = 6$



12. **Extend Your Thinking** Describe a situation that could be represented by the equations  $4 \times ? = 12$  and  $12 \div 4 = ?$ .

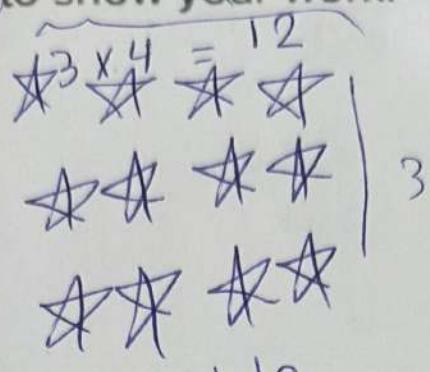
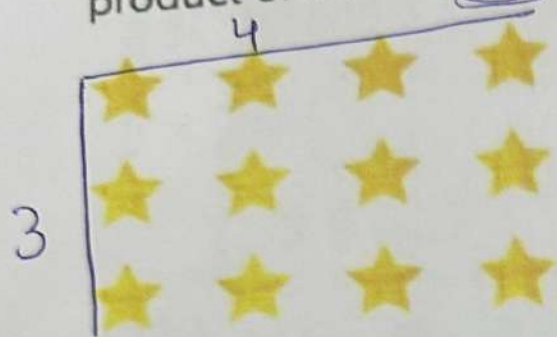
Then solve.



$? = 3$

	180
(1-6)	181
(7-14)	182

1. The array represents  $3 \times 4$ . How can you use it to find the product of  $3 \times 8$ ? Draw to show your work.



← Page :181

$$3 \times 8 = 3 \times 4 + 3 \times 4 = 12 + 12 = 24$$

$3 \times 8 = 24$

Double  
 $12 + 12 = 24$

2. Jonathan placed cubes in 8 rows, with 6 cubes in each row. How can you decompose a factor to find the number of cubes he placed?

$8 \times 6$

$$\begin{array}{r} 4 \times 6 + 4 \times 6 \\ 24 + 24 = 48 \end{array}$$

3. How can you find the products of  $1 \times 8$  and  $8 \times 1$  without decomposing?

$1 \times 8 = 8$   
 $8 \times 1 = 8$

Commutative

How can you use 2s and 4s facts to complete 8s facts? Double

4.  $2 \times 3 = 6$

$4 \times 3 = 12$

$8 \times 3 = 24$

5.  $2 \times 4 = 8$

$4 \times 4 = 16$

$8 \times 4 = 32$

6.  $2 \times 5 = 10$

$4 \times 5 = 20$

$8 \times 5 = 40$

Learn	180
(1-6)	181
(7-14)	182

7. Complete each step to find the product of  $8 \times 9$  using a 5s fact and a 3s fact.

$$5 \times 9 = 45$$

$$3 \times 9 = 27$$

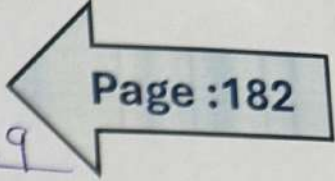
$$27 + 45 = 72$$

$$8 \times 9 = 72$$

$8 < \begin{matrix} 5 \\ 3 \end{matrix}$

$$\begin{matrix} 5 \\ 3 \end{matrix} \times 8 \times 9$$

$$\begin{matrix} 5 \times 9 & + & 3 \times 9 \\ 45 & + & 27 \\ \hline & = & 72 \end{matrix}$$



8. **Error Analysis** Tobias says that he can find the product of  $4 \times 8$  by decomposing either of the factors into equal parts.

Do you agree or disagree? Explain. *yes, he can*

*decompose (4) or (8)*

$$4 < \begin{matrix} 2 \\ 2 \end{matrix} + \quad \text{or} \quad 8 \begin{matrix} \nearrow 4 \\ \searrow 4 \end{matrix} +$$

How can you complete the equation?

9.  $24 = 3 \times 8$

10.  $7 \times 8 = 56$

11.  $6 \times 8 = 48$

12.  $80 = 10 \times 8$

13.  $8 \times 4 = 32$

14.  $8 \times 8 = 64$