

Unit 3 Lesson 1

Map Earth's Feature خريطة اشكال الأرض

Name:

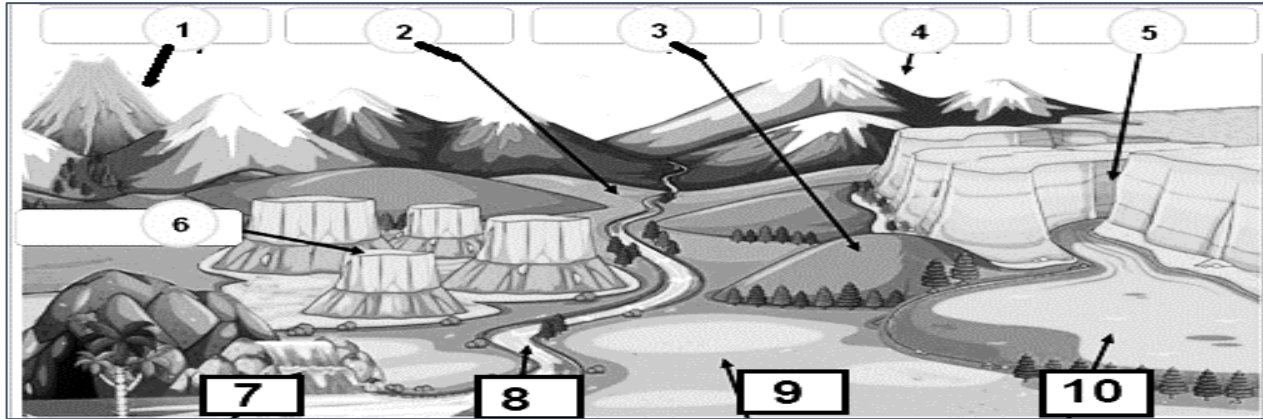
G 4 \

Q1-Write the correct answer for each one:-

Part 1 from p 12-13

1- Physical features on Earth's surface its

2- Look to the landforms image then write the correct number near each landform:



- a- (.....) Mountain جبل / b- (.....) Canyon وادي سحيق / c- (.....) Volcano بركان
d- (.....) Plateau هضبة / e- (.....) River نهر / f- (.....) Valley وادي
g- (.....) Hill تل / h- (.....) Waterfall شلال / i- (.....) Lake بحيرة
j- (.....) Plain سهل

Q2-Choose or Write the correct answer for each one:

Part 2 from p 14-15

1- Large bodies of salt water its

2- Large huge of landmass its

➤ 3-Put the correct number of each word near of its meaning:

1. Rift valley
2. Trenches
3. Seamount
4. Abyssal plain
5. Mid-ocean ridge

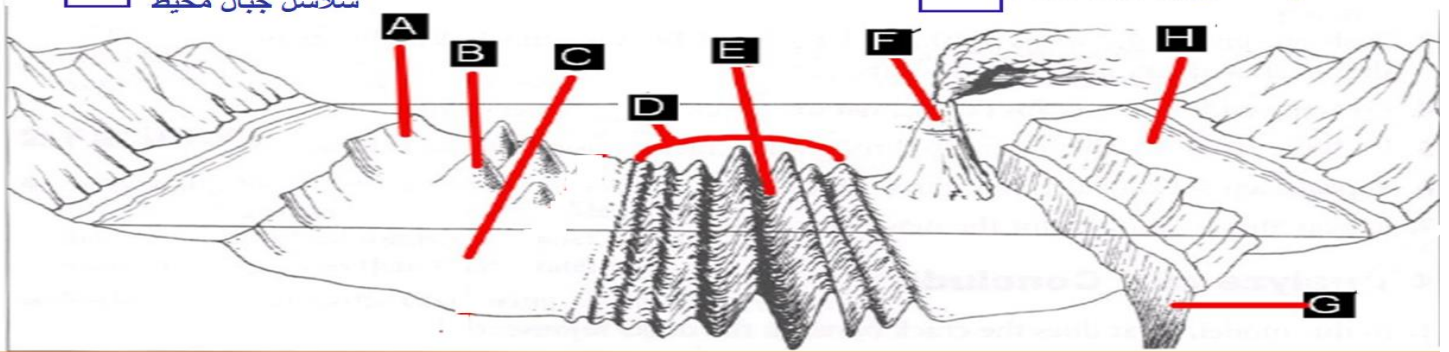
- (.....) Mountain inside ocean.
(.....) Deepest part of ocean floor.
(.....) Mountain ranges in ocean.
(.....) Flat area on deep ocean floor.
(.....) Valley down on mid-ocean ridge

Q Put the correct letter of ocean's feature near its name:

☐ متحدر قاري
Continental Slope
☐ خندق
Trench
☐ سلاسل جبال محيط
Mid-Ocean Ridge

☐ جزيرة بركانية
Volcanic Island
☐ جبال بحري
Seamounts

☐ رف قاري
Continental Shelf
☐ سهل سحيق
Abyssal Plains
☐ وادي متصدع
Rift Valley



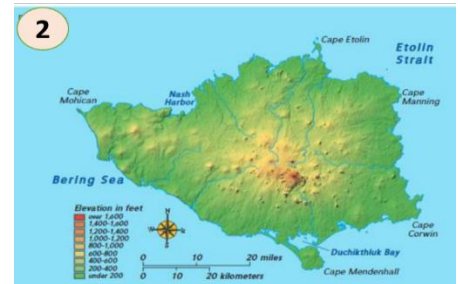
Q3- Look at picture 1 & 2 then connect each on to its name:

Part 3 from p 16-17

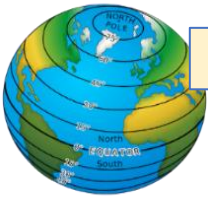


Relief Map

Topographic Map



Q 4-Connect the word with its picture:



1-..... how far north or south from the equator.

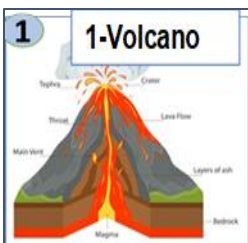


2-..... how far east or west from the Prime Meridian

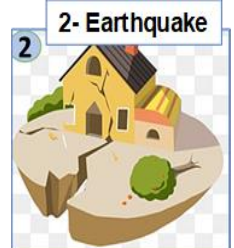
Q 5-Put the number of correct answer near its meaning:

- 1-Plates: (.....) Place where two plates meet.
- 2-Plate boundary: (.....) Plates movement.
- 3-Volcanoes can form on: (.....) Earth crust which broken into large pieces.
- 4-Earthquakes are caused by: (.....) Plates boundaries.
- 5-Most volcano occur near: (.....)The ocean floor or land.

Q 5-B- Put the number of correct answers near its meaning:



- (.....) Sudden moving of Earth's crust.
- (.....) An Opening on Earth's surface give melted rock and gases.



Q6- Choose correct answer:

1-Plateaus, valleys, canyons, and mountains are all examples of.

- a- Highlands b- Mantle areas c-Landforms d-Hydrosphere**

2- Which shows the elevation of an area using contour lines?

- a-Mountains b- Faults c- Topographical d-Mapcartographer**

3- For which landform would contour lines be closest together on a topographical map?

- a- Sand dune b - Plateau c- Valley d- Mountains**

4-When a volcano erupts, what will the liquid turn into after it cools down?

- a-Rocks b-Water c-Fire d- None of the above.**

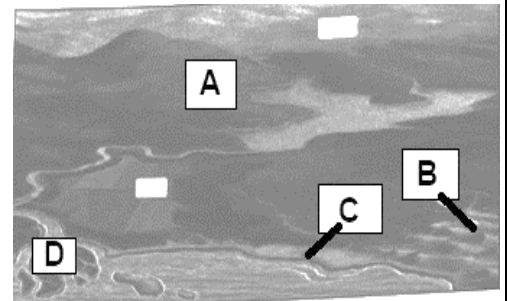
5- Which of the following is the tallest landform?

- a- Mountain b- Canyon c- Plain d- Beach**

6-Which of the following letters represents the dune كتيب feature in the map bellow? **A B C D**

7-Which of the following letters represents the hill تل feature in the map bellow? **A B C D**

8-Which of the following letters represents the delt دلتا feature in the map bellow? **A B C D**



9- which of the following cannot be used to understand Earth's features?

- a- Maps b-Patterns c- Moon phases d- Observation**

10- What letters represents the trench خندق in the ocean feature shown in map? **A B C D**

11- Which of the following is natural body of moving water?

- a- Mountain b- Canyon c- River d- Beach**

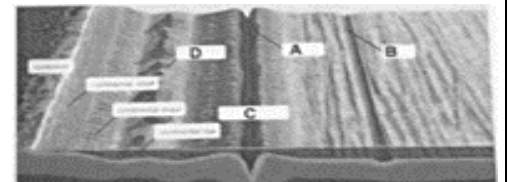
12- Which of the following is a mound of sand?

- a- mountain b- Dune c- a river d-Hill**

13- Which of the following is a wide flat area?

- a- Plain b- Dune c- River d- Trench**

14- A deep, narrow valley with steep side: **a- mountain b- a canyon c- a plain**



Good job student, Thanks.