

Science Department

Mock Exam

Miss/ Gehad Ali

Term 3 - 2023/2024

Grade:6.....

School Name:.....Alresalah.....

Levels (Bloom's Taxonomy)	Difficulty level	Symbol	Percentage
Remember	Easy- Medium	E,M	20
Understand	Easy- Medium	E,M	20
Apply	Easy- Medium-Difficult	E, M, D	20
Analyze	Easy- Medium-Difficult	E, M, D	20
Evaluate	Difficult	D	10
Create	Difficult	D	10

Part 1

20 Questions- Multiple choice- Please highlight the vocabulary related to each topic: for example decomposer, niche...etc

Q1. E

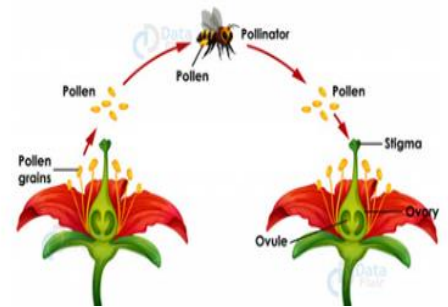
.Traits are.....



- a. The physical appearance of a feature
- b. Is the study of how traits are passed from parents to offspring
- c. The unique characteristics like hair color or height
- d. the passing of traits from parents to offspring

Q2.E.

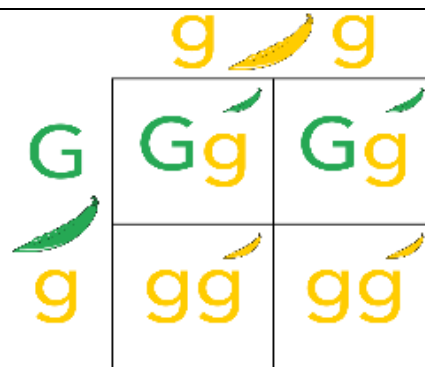
When a pollen grain moves from one flower to another this is



- a. Across pollination
- b. Self-pollination
- c. Half pollination
- d. Fertilization

Q3.M.

What is this shape named



- a. Bar graph
- b. Line graph
- c. Punnett square
- d. Pie chart

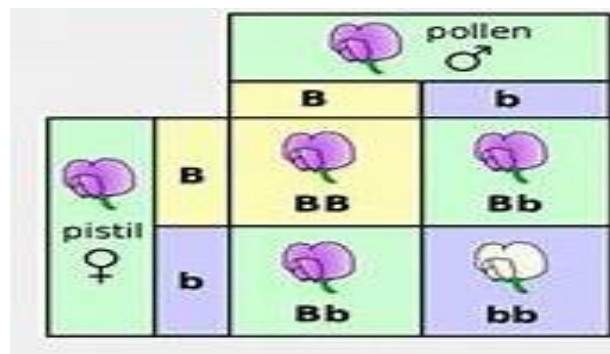
Q4.M.

first generation in Mendel's experiment **all** havecolor

- a. Black
- b. Red
- c. White
- d. Purple

Q5.M.

in this Punnett square the ratio between **heterozygous to homozygous** alleles is....

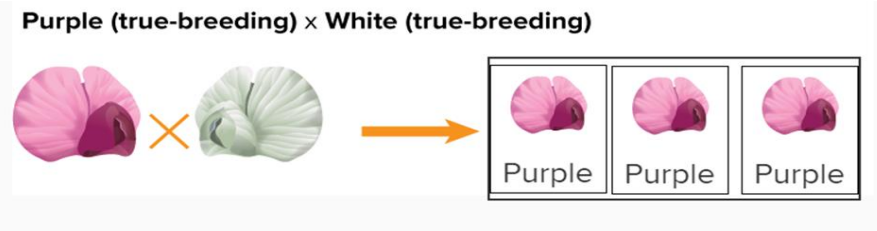


- a. 3:2

b.	2:2
c.	7:9
d.	4:2

Q6.E-M

.in this picture the offspring are.....



a.	Hybrid
b.	True breeding
c.	White
d.	Green

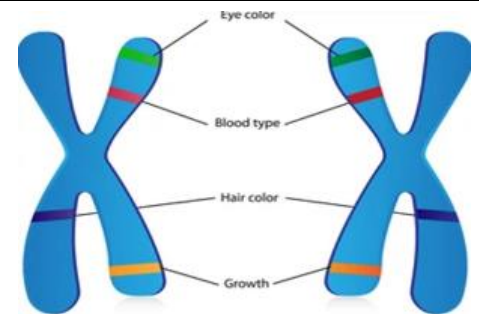
Q7.M-D.

the **strong trait** that blocks other traits is called.....

a.	Gene
b.	Dominant trait
c.	Recessive trait
d.	Heredity

Q8.M-D

the given item is called



a.	Nucleus
b.	Cell
c.	Chromosome
d.	Plant

Q9.D.

which of the following is **NOT** considered a **trait**

- a. Eye color
- b. Earlobe
- c. Driving skill
- d. Black hair

Q10.E-M

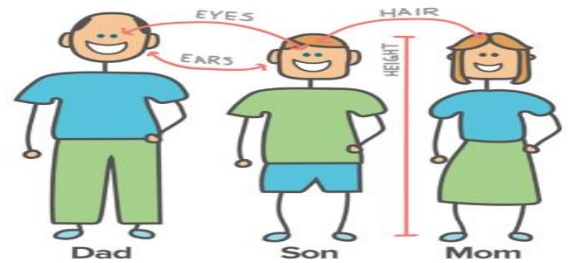
How does a **starfish** reproduce?



- a. Regeneration
- b. Budding
- c. Vegetative
- d. Sexual

Q11.E-M.

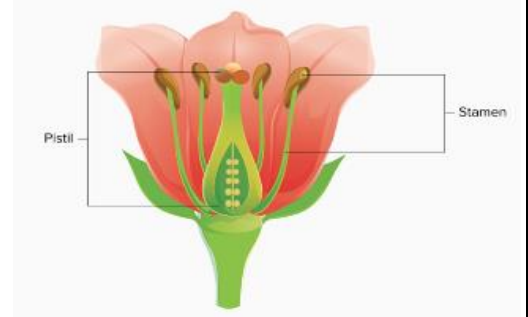
offspring take traits from **both parents**, but they are different from parents in.....reproduction



- a. Asexual
- b. Regeneration
- c. Budding
- d. Sexual

Q12.E-M.

seed plants reproduce



a. Sexually

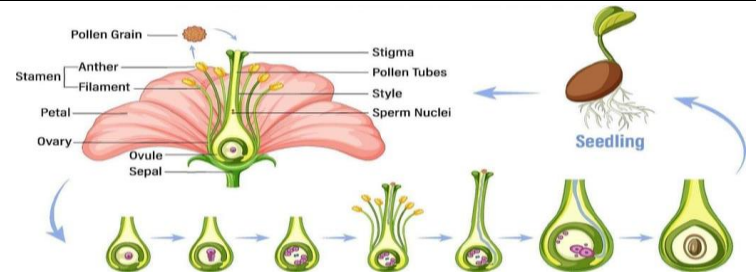
b. Asexually

c. Courtship

d. Budding

Q13.M.

the given process is called



a. Self-pollination

b. Fertilization

c. Cross-pollination

d. Half pollination

Q14.M.

the given seed is **carried by**



a. Water

b. Wind

c. Human

d. Car

Q15.M.

coconut seed is carried by

a. Car

b.	Wind
c.	Water
d.	Human

Q16.M-D.

The growth of a plant

Towards or away from **light** is called



a.	Gravitropism
b.	Thigmotropism
c.	Phototropism
d.	Gravity

Q17.D.

cutting of large areas of **trees**

of forest for human activities is called.....



a.	Species
b.	Deforestation
c.	Ecosystem
d.	Pollution

Q18.E-M

The impacts of using **pesticide** include



a.	Good soil
b.	Healthy plants
c.	increase pollution in rivers and lakes
d.	Healthy animals

Q19.E.
the given picture refers to.....



a.	Deforestation
b.	Urbanization
c.	Soil
d.	Agriculture

Q20.E
the negative effects of acid rains on ecosystems, including.....

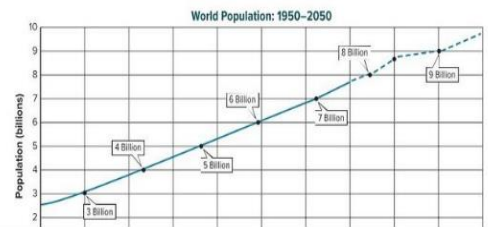
a.	acidification of lakes and rivers
b.	damage to vegetation
c.	Corrosion of buildings and infrastructure.
d.	All the above

Part 2

10 Questions- Written questions

Q1.E

Look at the given picture and answer questions.



1.a what happen to the number of population with time?

1.b what happen to natural resources as the population increase?

1.c how can we keep our resources ?

Q2.E-M

Look at the given picture and answer questions.





Curly Wings (CC)

2.a complete this Punnett square

2.b the ratio of straight wings : curly wings in offspring is

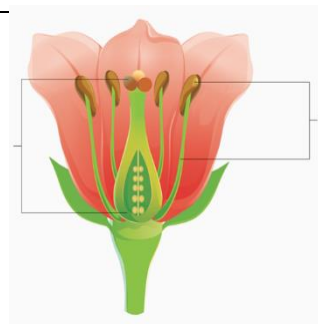
100% have Curly wings

2.c the recessive trait is.....

Q3.E-M

Look at the given picture and answer questions.

1-...



2-

3a.lable the diagram

3b.egg is found in part number.....

3c.sperm is found in part number.....

Q4.M

Look at the given picture and answer questions.



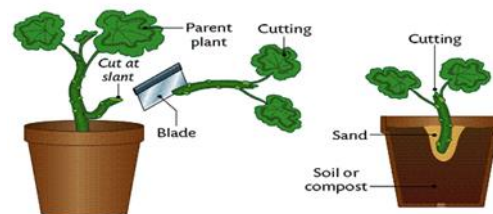
4a.what is the effect of hazardous waste on environment.

4b. give an example of a hazardous waste

4c. do materials decompose in landfills?

Q5.M-D

Look at the given picture and answer questions.



5a.what is the name of this kind of reproduction?

5b.is it sexual or asexual?

5c.give an example of any other type of asexual reproduction

Q6.M-D

Look at the given picture and answer questions.



Spider spinning a web



Bird building a nest



Caterpillar making a cocoon



Dolphin leaping from the water

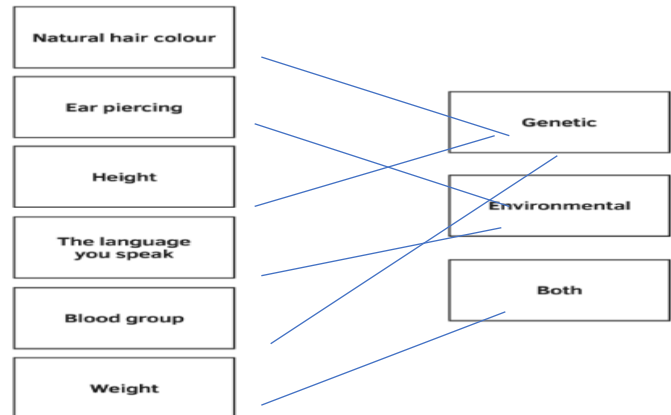
6a.which behaviors are innate

6b.which behaviors are learned

6c. innate behavior is.....

Q7.M-D

Look at the given picture and answer questions.



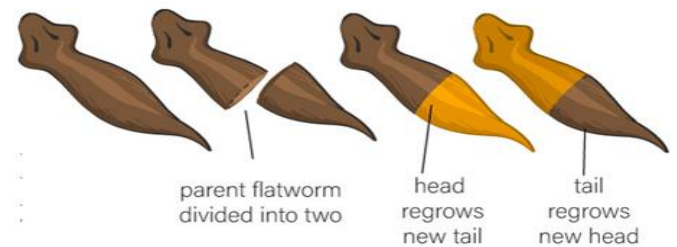
7a. Match the given factors

7b. A genetic factor is

7c. environmental factor is.....

Q8.E

Look at the given picture and answer questions.



8a. this picture shows type of reproduction.

8b. if you want to get rid of these worms why you mustn't cut them?

8c. is it sexual or asexual type of reproduction?


Q9.D

Look at the given picture and answer questions.



9a. the behavior in the picture is called

9b. why animals circle their offspring.

9c.name an animal that do this behavior	
<p>Q10.D</p> <p>Look at the given picture and answer questions.</p>	
10a.when a male attracts a female this attraction is called	
10b.this bird uses his to attract a mate	
10c. moths use theirto attract mate.	

***** End of the Exam*****