

Tuesday, 6th of October 2020

UNIT 2: HABITAT INTERACTION

Lesson 8+9: The food chain

Watch the video about food chain. Answer the 3 questions.

1. Which of the following describes a food chain?

- a. It shows how energy flows from one organism to another.
- b. It is a single chain of events where the arrow is pointing in the direction of energy flow.
- c. It is similar to a food web but not quite the same.
- ☒ d. All of the answers are correct

2. Which of the following is an example of a primary producer?

- 1.a shark
- 2.a rat
- ☒ 3.grass
- 4.a grasshopper

3. What do the arrows in a food chain represent?

- 1.The direction the energy is flowing
- 2.Who is consuming whom
- ☒ 3.The direction of energy and who is consuming whom
- 4.None of these answers are correct

<https://study.com/academy/lesson/what-is-a-food-chain-examples-lesson-quiz.html>

Objectives

1. Read the text. Guess the meaning of the bold words. Answer activity 1.
2. Talk about food chain and provide some examples.
3. Listen. Circle the animals in the food pyramid.

Lessons 8–9 The food chain

- What does a food chain describe? Can you give an example of a food chain?

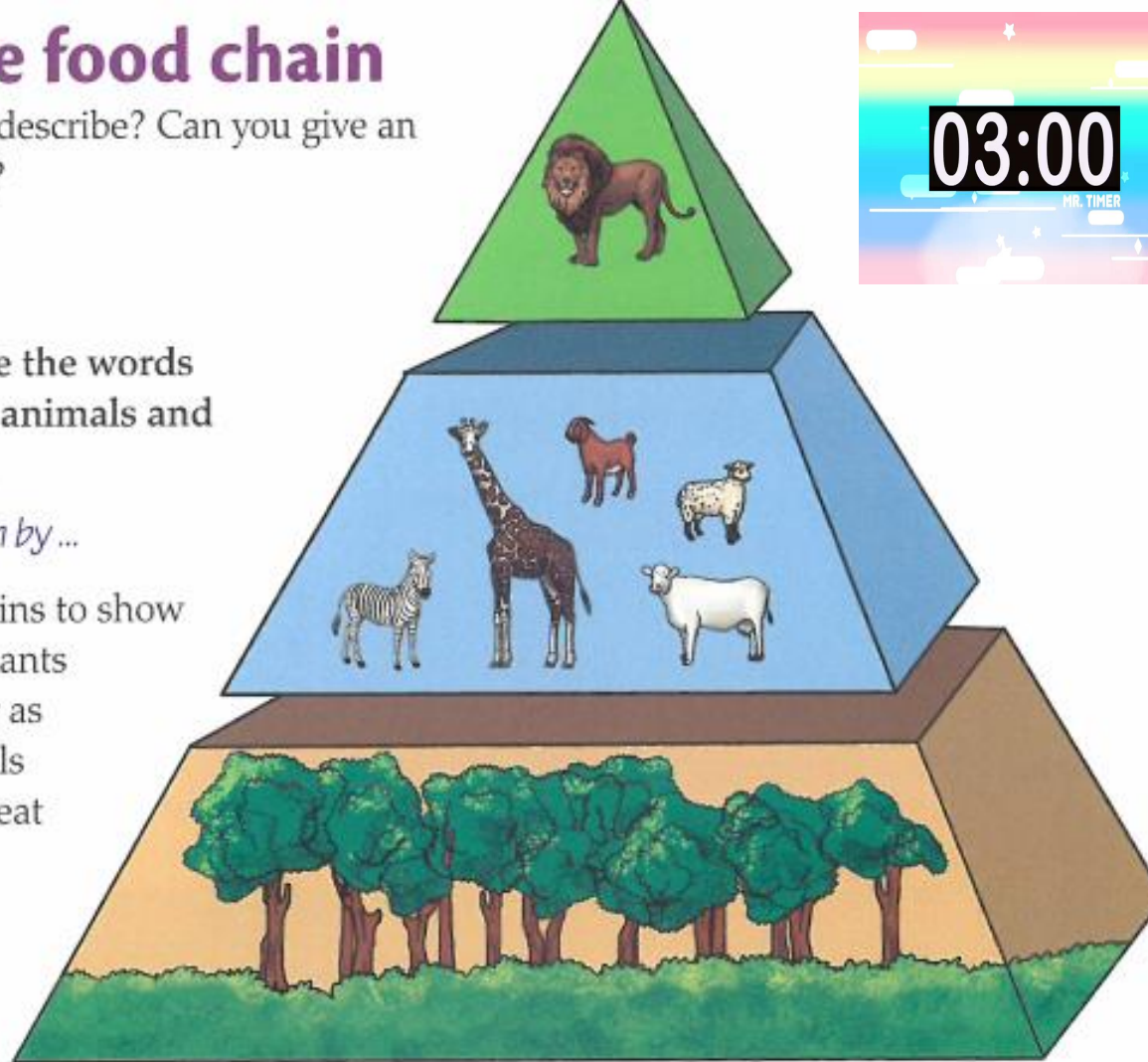
Reading

- 1 Read this text. Then use the words in bold to describe the animals and plants in the pyramid.

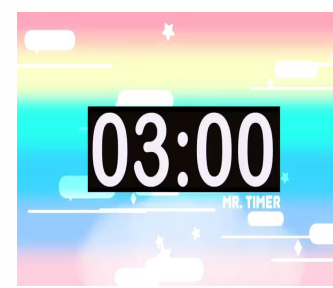
Grass is a producer. It is eaten by ...

We use diagrams of food chains to show how different animals and plants are dependent on each other as sources of food. Some animals are **predators**. They kill and eat other animals. The animals that predators hunt and kill are called **prey**. Some animals only eat plants. These are called **herbivores**.

And some animals only eat other animals. These are called **carnivores**. Both herbivores and carnivores are **consumers**. Consumers are animals that eat plants or another animal. A plant that makes its own food by photosynthesis is called a **producer**.



This pyramid shows part of the food chain in Kenya. Grass is eaten by cows, sheep, goats, zebras and similar animals. Leaves are eaten by giraffes. All these animals are eaten by lions.



1. Read the text. Guess the meaning of the bold words. Answer activity 1.

Grass is a producer. It is eaten by consumers, such as cows, sheep, goats and zebras, which are herbivores. Giraffes are also herbivores. They eat leaves. All these animals are prey. They are eaten by predators, such as lions, which are carnivores.

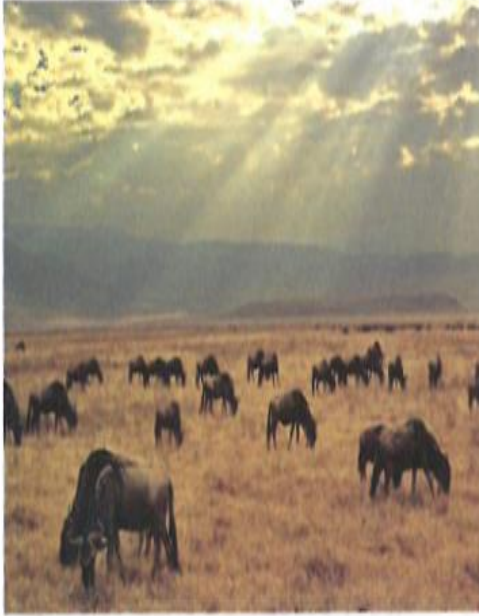
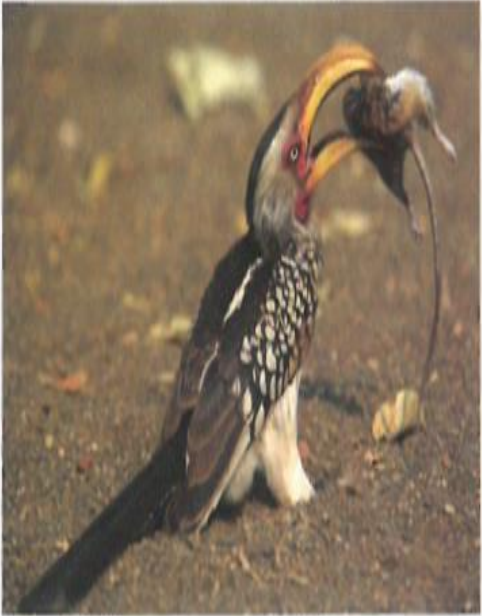


2. Talk about food chain and provide some examples. Put them in the chat.



Speaking

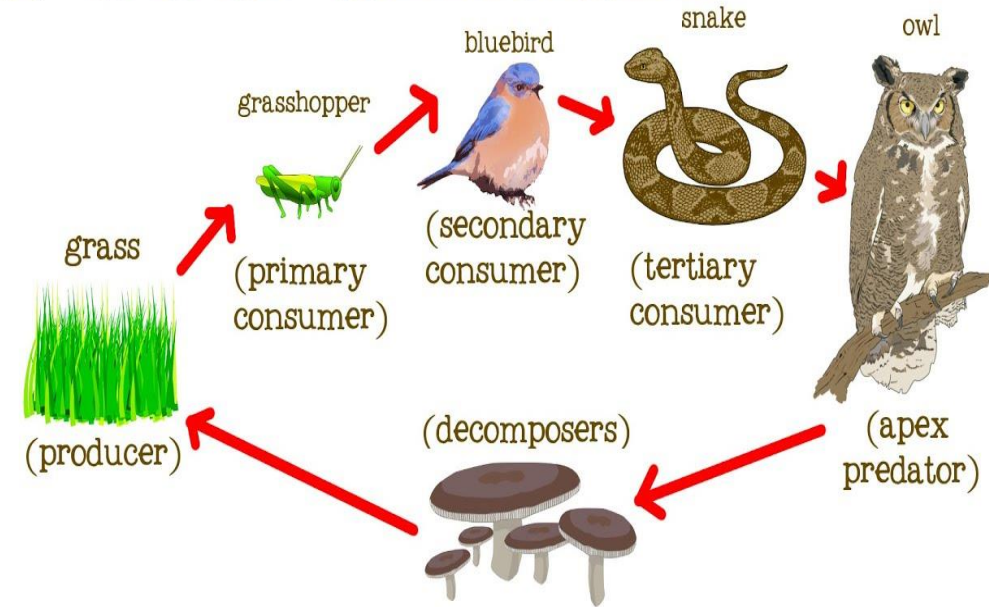
- 2 Look at the photos. Talk about them with your partner.
What parts of the food chain do they represent?



Speaking tip

When exchanging ideas, you need to listen carefully to the other speaker and then respond. Before responding, you need to think about your ideas and check they are relevant.

Food Chains



Answer the following Workbook activity.

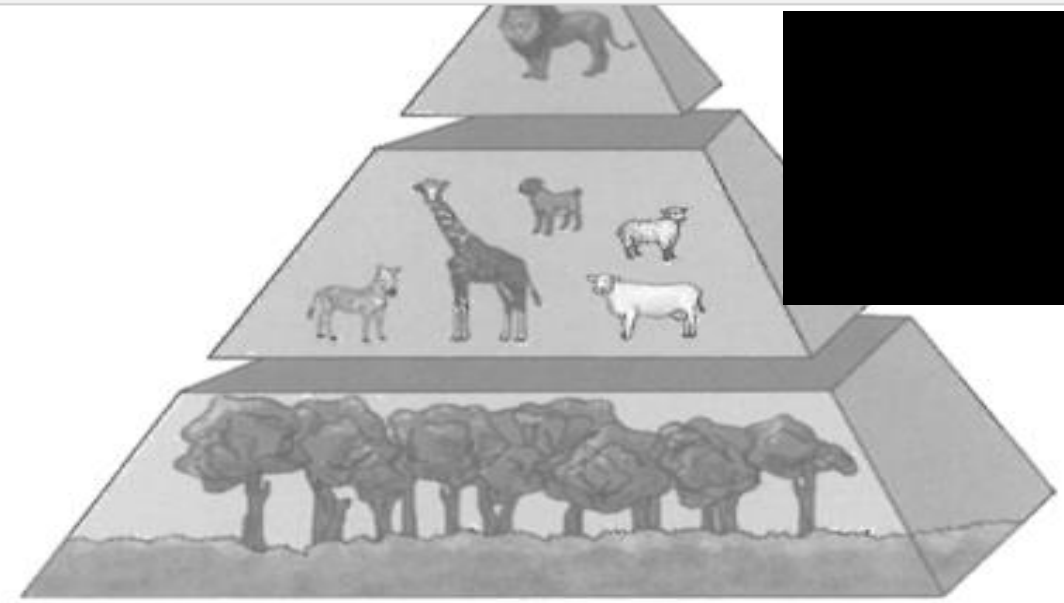
9ADV_T4_Wk6_WB_U2_L8+9_Activity 1+2

1 Give an example of each of the following:

- | | |
|----------------------|---|
| 1 a predator | <u>Plants (flowers - grass - trees)</u> |
| 2 a carnivore | <u>Lion - tiger - dog - cat</u> |
| 3 a herbivore | <u>Cow - goat - deer - zebra</u> |
| 4 an omnivore | <u>Human - bear - monkey - fox</u> |

2 Complete the interview with suitable words.

- predators
- flowers
- prey
- herbivores
- forests
- food chain



Keeping the balance right in the Food chain¹ is very important.

forests² have been cut down for wood ... Buildings are built on grassland ...

This means that there aren't as many plants and flowers³ for butterflies, bees and other insects to feed on. So birds like kingfishers have fewer insects to eat, and their numbers go down.

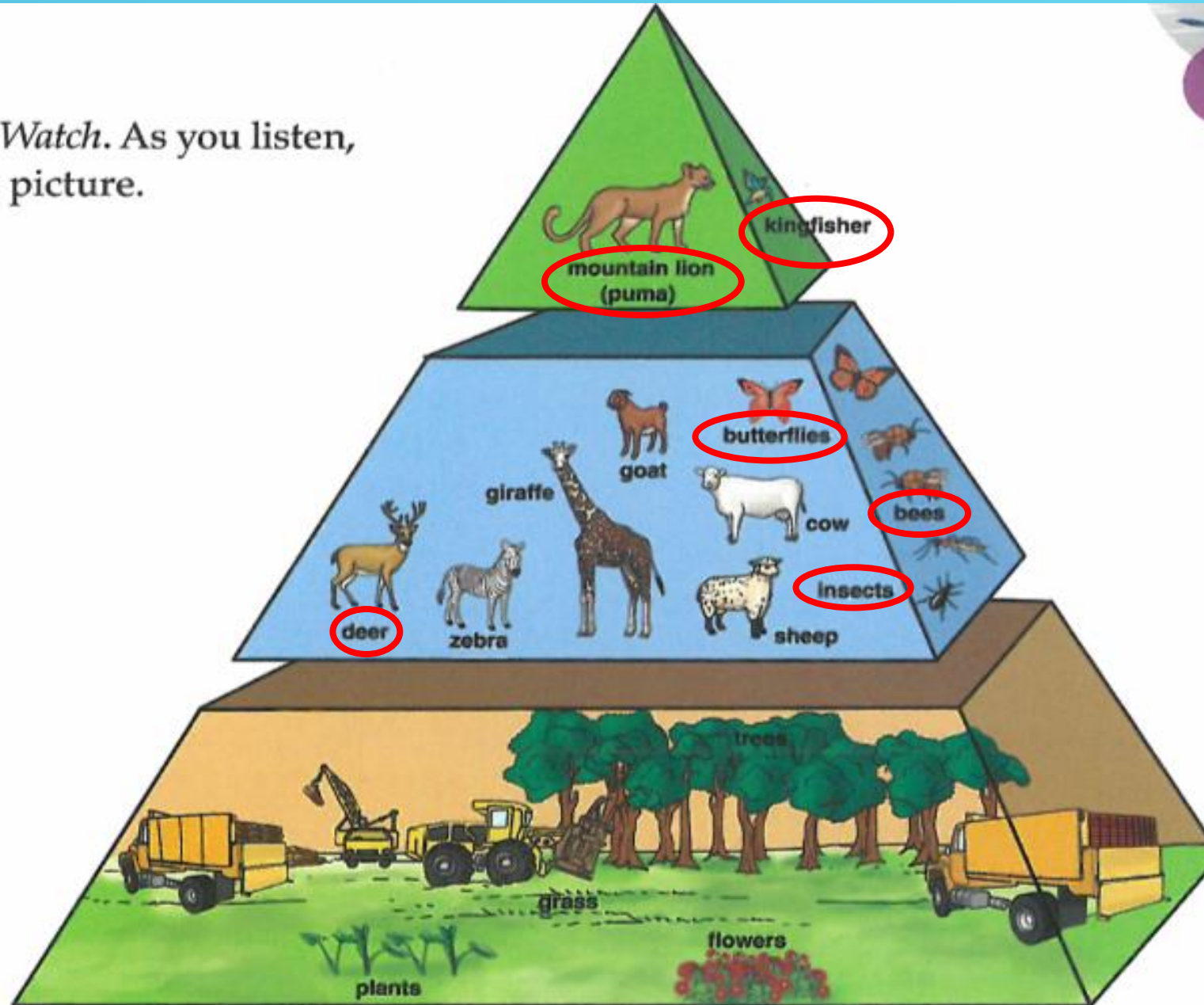
It also means that there aren't as many plants for herbivores⁴, such as deer, to eat. So the deer find it hard to get food. And their numbers go down.

And this also means that predators⁵ at the top of the food chain, like mountain lions, have less prey⁶ to eat. So their numbers go down as well.

3. Listen. Circle the animals in the food pyramid.

Listening 14

- 3 Listen to *Junior Science Watch*. As you listen, find the animals in the picture.

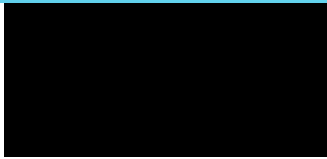


Across

- 3 An animal that kills and eats other animals. (8)
- 5 See 12 Across.
- 6 A scientific word for an animal that eats a plant or another animal. (8)
- 8 An animal that only eats plants. (9)
- 10 An animal that is hunted and eaten by another animal. (4)
- 12 With 5 Across. A diagram showing how energy passes from one plant or animal to another. (4, 5)
- 13 An animal with a very long neck. (7)
- 14 An insect with colourful wings. (9)

Down

- 1 A brightly coloured blue and orange bird that lives near water and eats fish. (10)
- 2 With 4 Down. Another name for a puma. (8, 4)
- 4 See 2 Down.
- 6 An animal that eats meat. (9)
- 7 Insects that make honey. (4)
- 9 A three-dimensional shape with triangular sides. (7)
- 10 A scientific word for a plant that makes its own food by photosynthesis. (8)
- 11 A black and white striped animal, like a horse. (5)



- 1. predator
- 5. chain
- 6. consumer
- 8. herbivore
- 10. prey
- 12. food
- 13. giraffe
- 14. butterfly
- 1. kingfisher
- 2. Mountain lion
- 4. lion
- 6. carnivore
- 7. bees
- 9. pyramid
- 10. producer
- 11. zebra

03:00

MR. TIMER