



EXERCISE 1

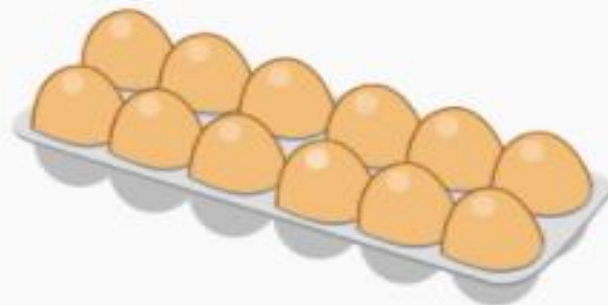




Which doesn't belong?



Page 81



Pencil
Eraser



Whiteboard &
Marker



PAGE 81

Grade 2 Addition Patterns



Ms. Nicole



Success Criteria :

I can understand even
and odd numbers!



Even
0, 2, 4, 6, 8, 10, ...

Odd
1, 3, 5, 7, 9, 11, ...



even number:

Any number with 0, 2, 4, 6, or 8
in the ones place





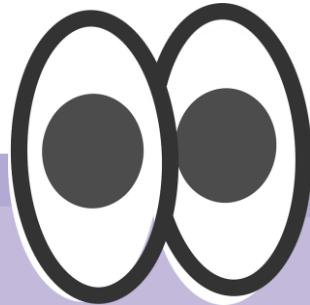
odd number:

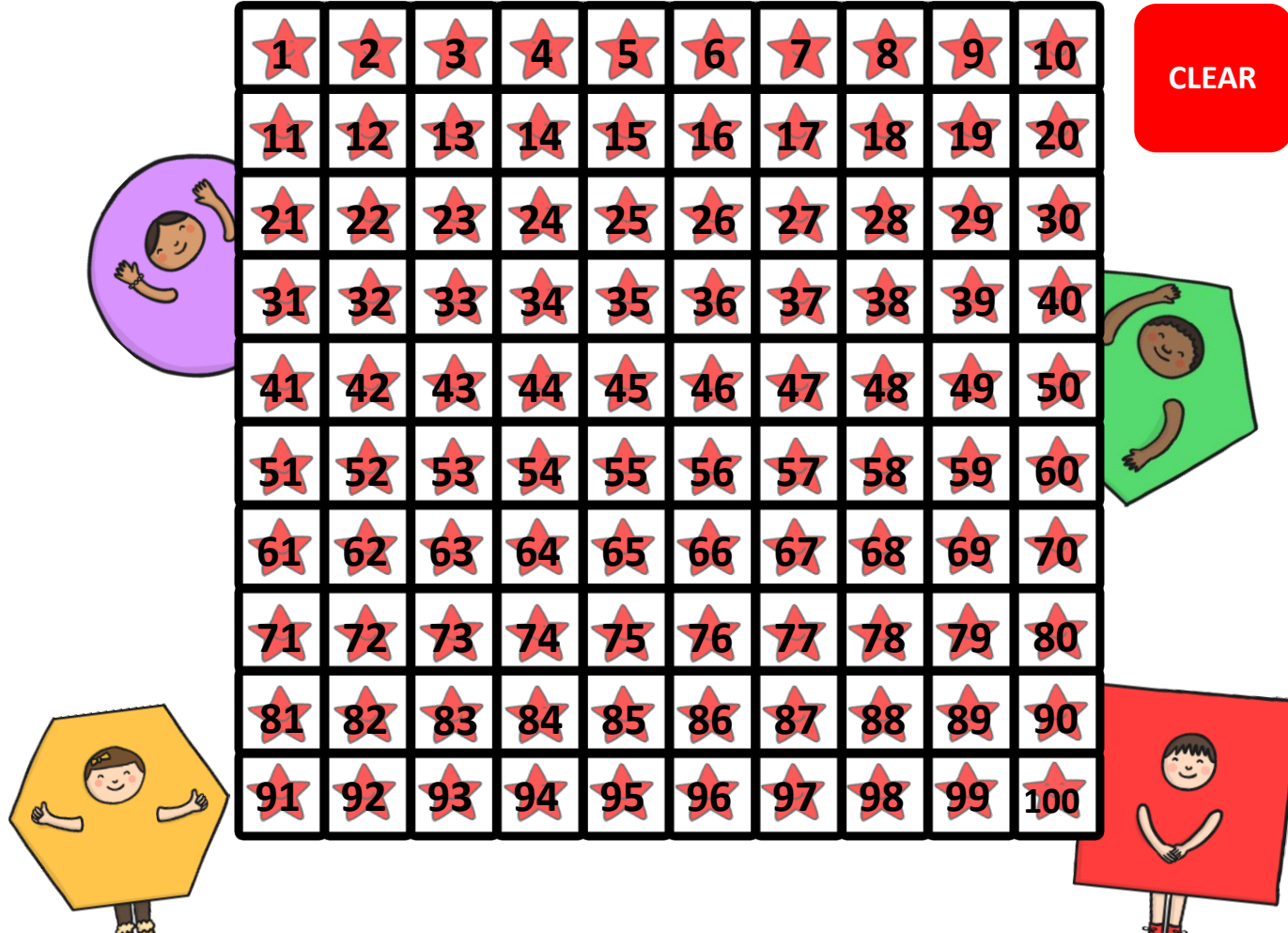
**Any number with 1, 3, 5, 7, or 9
in the ones place**



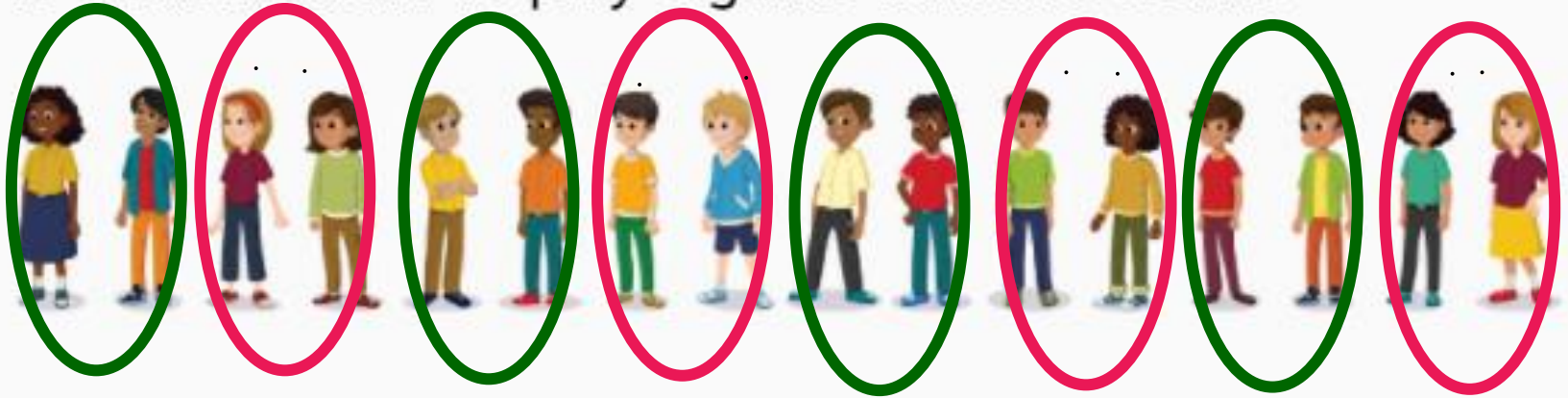
patterns:

An order that a set of objects or numbers follows over and over.





16 students want to play a game with two teams.



Can the teams have the same number of players?



Page 82

A	B
8	8



Page 82

Even numbers can be separated into two equal groups.

$$8 + 8 = 16$$



16 is an even number.

Odd numbers *cannot* be separated into two equal groups.

$$8 + 9 = 17$$



17 is an odd number.

The sum of a doubles fact is always an even number.



a. $7 + 7 = ?$ 14

<input checked="" type="radio"/>	even
<input type="radio"/>	odd

b. $8 + 9 = ?$ 17

<input type="radio"/>	even
<input checked="" type="radio"/>	odd



c. $4 + 5 = ?$ 9

<input type="radio"/>	even
<input checked="" type="radio"/>	odd



d. $4 + 4 = ?$ 8

<input checked="" type="radio"/>	even
<input type="radio"/>	odd



Explain your
answer to each
other.

Collaborate!

What 2 numbers
would you add to
get 10?



Do you?
agree (1)
disagree (2)

What do you
notice in
the picture?



Even or Odd?

Page 83

1. Fill in the blanks.

How can you show an even number as the sum of a doubles fact?



$$10 = \boxed{5} + \boxed{5}$$



Page 83

Independent
Practice:

2. Fill in the blanks.

How can you show an even number as the sum of a doubles fact?



$$4 = \boxed{2} + \boxed{2}$$

4. Fill in the blanks.

How can you show an even number as the sum of a doubles fact?



$$14 = \boxed{7} + \boxed{7}$$

3. Fill in the blanks.

How can you show an even number as the sum of a doubles fact?



$$6 = \boxed{3} + \boxed{3}$$

Check Your Understanding

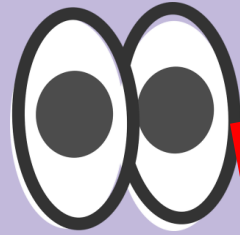


I get
it!



I need
help

Blue Group



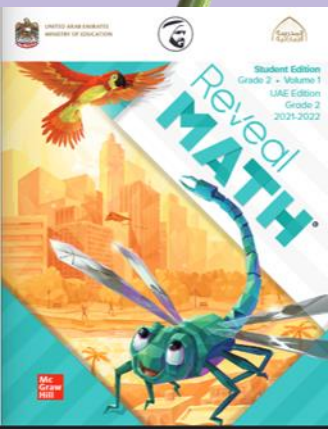
Page 83

5. Fill in the blanks.

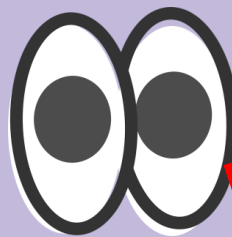
Write two equations with **even sums**.

$$\square + \square = \square$$

$$\square + \square = \square$$



Yellow Group



Page 83

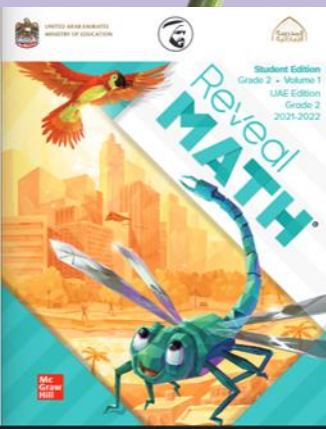
Reset

6. Fill in the blanks.

Write two equations with **odd sums**.

$$\square + \square = \square$$

$$\square + \square = \square$$



Green Group



Independent
Work :

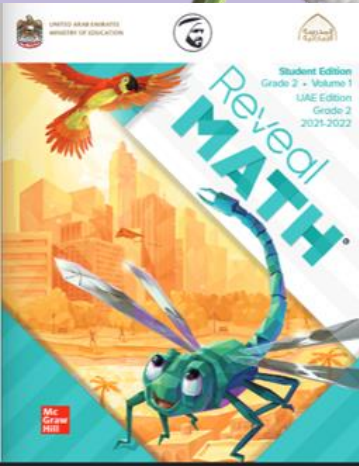
Page 84

7. STEM Connection

Sienna and her friend will share a bag of 15 oranges. Will Sienna and her friend have the same number of oranges? Explain your thinking.



No, each person will get 5, but the 5 left over cannot be divided equally. 15 is an odd number.



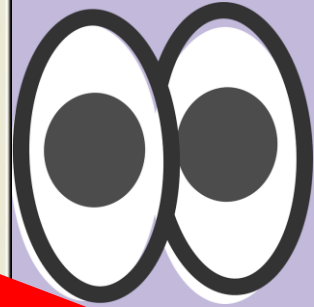
*How well did
you get it?*

Respond in
the meeting
chat

- | | | |
|---|--|-----------------------|
| 4 |  | Totally
got it |
| 3 |  | Pretty
much got it |
| 2 |  | Not all
the way |
| 1 |  | Not at all |



Count by Odd Numbers and Exercise



Pages
17-18

Skip Count by 5's

<https://www.liveworksheets.com/1-sg2019383ul>

Self Assessment

I can...



Complete the Number Chart

<https://www.liveworksheets.com/1-pg2006026xv>

Find addition patterns!

1. I can do it and teach it to someone.

2. I can do it but not teach it.

3. I need to practice it more.



Class	Started	Completed
2A		
2B		
2C		
2D		
2E		

Exit Ticket:



True! Two even numbers added together equals an even number!

True or False

$8 + 6 = \text{an even number.}$

