

Answer Science Grade 4 Semester 1 Book Part 1 Review

NAME \_\_\_\_\_ GRADE 4/\_\_\_\_ DATE..../11

**Q1: Fill each blank with the best term from the list: for all chapters:**

A- (Scientific method / experiment / hypothesis / Variable) ضع الكلمة بجوار التعريف

- 1-A process that scientists use to answer questions **Scientific methods**
- 2-Is something that changes or varies **Variable**.
- 3-A **Hypothesis** statement that can be tested to answer questions.
- 4-An **Experiment** is a scientific test that can be used to support a hypothesis.

B- ( Cell / kingdom / viruses / organ / organism / tissue) ضع الكلمة بجوار التعريف

1. The smallest unit of living matter is a **Cell**
2. The largest group into which an organism can be classified is a **Kingdom**
3. Tissues group together to form a(n) **Organ**.
4. A group of similar cells that do a job together is called **Tissue**.
5. Anything that can carry out the five basic life functions is a(n) **organism**
- 6- A(n) **viruses** is a non-living particle that depends on and infects the cells of an organism.

**B1: Fill in the missing words. Use the words below to help you:**

( Cell wall/ chloroplasts / different / nucleus) ضع الكلمة بجوار التعريف

- 1-Animal cells and plant cells are **different**
- 2-The plant cell has **Chloroplast** and **a cell wall**
- 3-The **Nucleus** is the brain of the cell.

**B2: Fill in the missing words. Use the words below to help you:** ضع الكلمة بجوار التعريف

( Reproduction / oxygen / controls/ chloroplast / energy ).

- 1-All living things need a gas, it is found in air and in water, it is **Oxygen**
- 2-To make more of the same kids from living things is reproduction
- 3-Most plant cells have green parts called **chloroplast** it help Plants to make Food.
- 4- A nucleus **controls**. the cell activates.
- 5- Mitochondrion It gets **energy** from food.

□

**B3: -Arrange from the smallest to the largest ( life organization)رتب مستويات التنظيم للجسم**

{ tissue cell system organ }

1- Cell 2- Tissue 3- organ 4- system

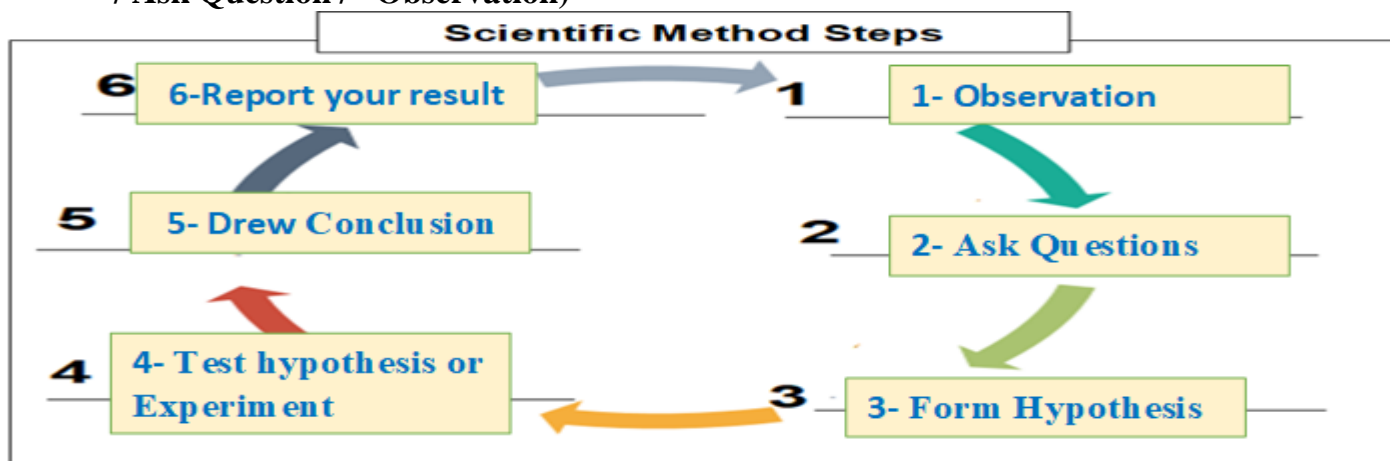
ضع الكلمة بجوار التعريف

C-(Digestive system / metamorphosis / Oxygen/ nervous system / instinct / heredity)

1. Food is broken down by the **Digestive system**
2. Butterflies go through a process of change called **metamorphosis**
3. The brain and sense organs are part of an animal's **Nervous system**.
4. Traits are passed from parent to offspring through **heredity**
5. A **instinct** is a behavior that an animal does not have to learn.
- 6- Red blood cells carry **oxygen** through the body.

Q2: Reorder the scientific Method steps and write on diagram below: رتب خطوات المنهج العلمي

1. ( Report your result / Test hypothesis or Experiment // drew Conclusion/ Form Hypothesis / Ask Question / Observation)



Q3 : Match group A to correct answer from Group B: ضع رقم التركيب المناسب بجوار الوظيفة

Group A

- 1-Cell wall
- 2-Mitochondrion
- 3-Nucleus
- 4-Cell Membrane
- 5-Chloroplast
- 6-Cytoplasm
- 7-Vacuoles

Group B

- ( 5 )Food factory in plant cell has chlorophyll
- ( 6 )Filling cell, jelly, mostly water.
- ( 7 )Stores cell food, water, wastes.
- ( 1 )Protect & support plant cell.
- ( 2 )Food is burned in it to give energy.
- ( 3 )Controls all cell activities.
- ( 4 )Thin covering outside animal cell, after cell wall in plant cell.

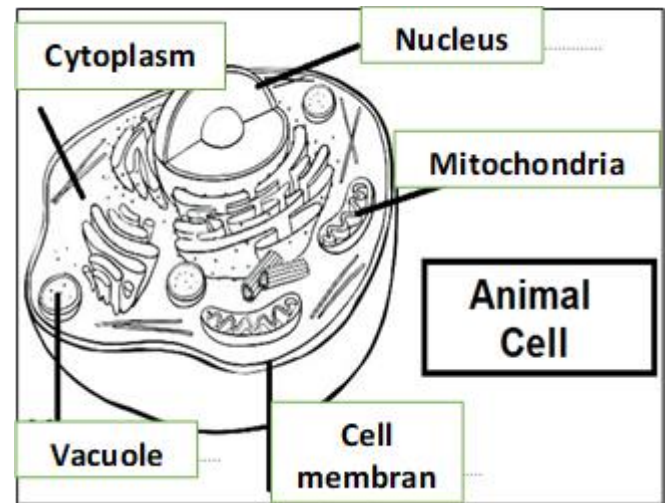
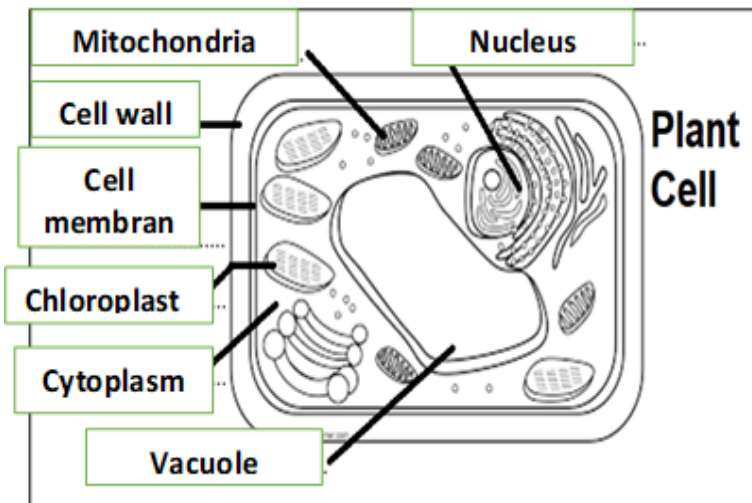
Q4 : What is these organisms' Genus and Species Name? (Binomial name) اكتب الاسم الثنائي

- 1- *Phoenix dactylifera*
- 2- *Felis catus*

|         |                    |              |
|---------|--------------------|--------------|
| Genus   | <i>Phoenix</i>     | <i>Felis</i> |
| Species | <i>dactylifera</i> | <i>catus</i> |

**Q5: Label the plant and animal cells using the words below to help you:** ضع اسم التركيب بمكانه المناسب:

{ Cell wall/ Nucleus/ Mitochondria /Chloroplast /Cytoplasm / Cell membrane / Vacuole}

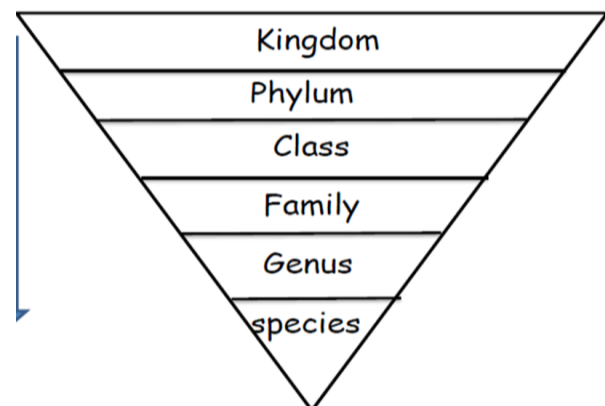


**Q6 : Put the words in order of grouping from**

**largest to smallest:** رتب مستويات تنظيم المملكة

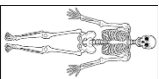


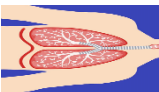
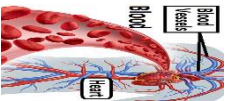
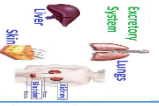

(Kingdom / Family / Species

/ Order / Class / Phylum / Genus)



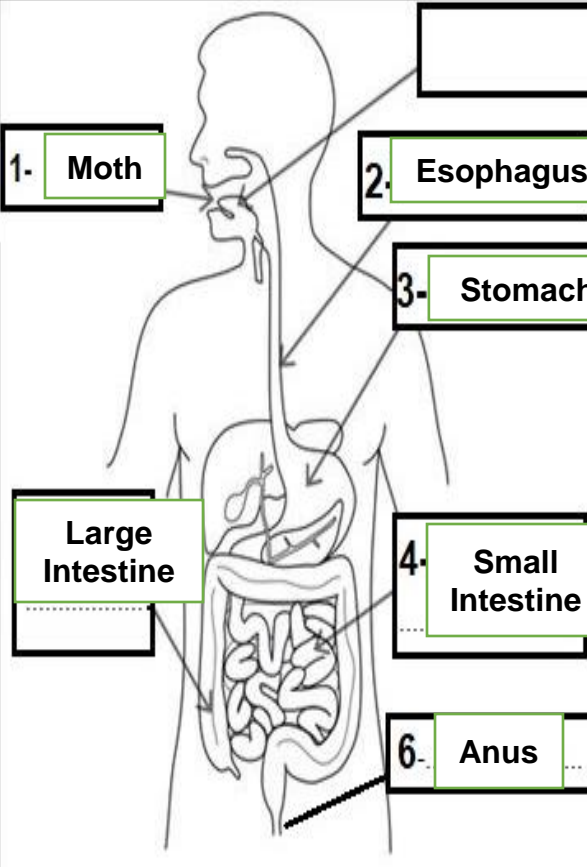
| Kingdom        | Archaea                              | Bacteria                             | Protista                              | Fungi                     | Plants               | Animals                    |
|----------------|--------------------------------------|--------------------------------------|---------------------------------------|---------------------------|----------------------|----------------------------|
| Number of Cell | 1                                    | 1                                    | 1 or more                             | 1 or more                 | many                 | many                       |
| Nucleus        | No                                   | No                                   | yes                                   | yes                       | yes                  | yes                        |
| Food           | Make food, get from other organisms. | Make food, get from other organisms. | Make food, get from other organism s. | get from other organisms. | Make their own food, | get from other organism s. |
| Move           | yes                                  | yes                                  | yes                                   | No                        | No                   | yes                        |
| Example        |                                      | bacteria                             | Mushroom / yeast                      | Algae/ paramecium         | trees                | Lion/ camel                |

**Q7 : Write the name of system:** اكتب اسم الجهاز بمكانه الصحيح

|   | System Name               | Organ  | Function / importance                                       |
|---|---------------------------|--|---|
| 1 | <b>Skeleton System</b>    | <br>Bones                                     | Supports a body, protects organs inside in the Vertebrates. |
| 2 | <b>Muscular System</b>    | <br>Muscles Tissue                            | Movement. pull on the bones.                                |
| 3 | <b>Nervous System</b>     | <br>Brain/ spinal cord/ Nerves/ sense organs. | Control all body.   |
| 4 | <b>Respiratory System</b> | <br>1-Gills 2-Lungs 3-Skin                    | Bring O2 to the blood and removes wastes, like CO2          |
| 5 | <b>Circulatory System</b> | <br>Heart, blood, blood, vessels.             | Move blood through body                                     |
| 6 | <b>Excretory System</b>   | <br>Liver, kidneys bladder, skin, lungs.      | Remove the wastes from body.                                |
| 7 | <b>Digestive System</b>   | <br>Different. But In Human:                  | Break down food.  |

**Q8 : fill the missing words:** your book1 page 65-66 اكتب اسم العضو على شكل الجهاز الهضمي واكمل

الجدول

|  |   | Label the parts of the digestive system and colour all parts with different color, complet the table with corret answer. |     |
|--|---|--|-----|
| Digestive System   | Main Function                           |  |     |
| Mouth  | Chewing and breaking down food          |  |     |
| Esophagus  | Swallowing and transporting food.       |  |     |
| Stomach  | Acidic juices help break down food more |  |     |
| Small Intestine  | Nutrients are absorbed into ...         | Blood  | ... |
| Large Intestine  | Removes water from .....                | Unused food  |     |

**Q9: Select the correct answer: اختر الإجابة الصحيحة من بين البدائل المتاحة**

**1. All living things:**

- a) Reproduce, grow, use food for energy, get rid of waste, and react to changes  
b) Reproduce and grow only. c) Eat, sleep, drink only.

**2. When we classify something, we put it into:**

- a) groups b) colours c) shapes.

**3-What dose make "chloroplast" looks green?**

- a) Chlorophyll b) nucleus c) vacuole

**4-The instrument that we use to see cells is called a:**

- a) hand lens b) microscope c) thermometer

**5-What kingdom do mushrooms belong to?**

- a. Fungi b. Plant c. Archaea

**6-The organisms in the kingdom have chloroplasts as part of their cell structure.**

- a- Animals b-bacteria c-Plant

**7-Protozoa belong in the kingdom**

- a. Protista. b. Animal. c. Plant

**8-Amoeba and paramecium belong to which kingdom?**

- a. animal b. plant c. protest

**9-Which kingdom includes camels and sponges?**

- a. Plant b. Protista c. Animal

**10-Which organism is part of the Plant kingdom?**

- a. Mushroom b. cat c. Trees

**11-The stomach is part of which body system:**

- a- digestive b- nervous c- skeletal

**12-The excretory system:**

- a- breaks down food b-takes in oxygen c- gets rid of waste

**13- Which animals' metamorphosis has a pupa stage?**

- a-frogs b-damselflies c- butterflies

**14- An insect molts to:**

- a-Eat b-fly

**15-What dose absorb nutrients into blood?**

- a) Stomach b) small intestine c) mouth

**16-What transfer food from mouth to stomach?**

- b) stomach b) small intestine c) esophagus



17-What remove solid waste from unused food?

c) Stomach

**B) large intestine**

c) mouth

18-Mushrooms are in the kingdom of: a) animals b) plants **c) fungi**

19-Which two kingdoms do NOT have a nucleus?

a) fungi and plants

**b) bacteria and archaea**

c) animals and Protists

20-The system that helps animals to breathe is called the:

a) circulatory system

b) excretory system

**c) respiratory system**

21-Which organ pumps blood around the body?

A. Brain

B. Stomach

**C. Heart**

**Q10: Select the right answer from parenthesis:** اختر الصحيح من بين القوسين

22-Kidney is ( tissue **organ** )

23-Muscle is ( **tissue** \ organ )

24-Heart is ( **tissue** \ organ )

25-Animals have simple body, no systems ( **vertebrate** \ **invertebrate** )

26-Damselfly, go under ( **complete** \ **incomplete** ) metamorphosis

27-Beetleflies go under ( **complete** \ **incomplete** ) metamorphosis

28-The stages of growth is called ( **life cycle** \ life span )

29-How long an organism can live in wild is called ( **life span** \ life cycle )

**Q11: Reorder the four stages of a human life cycle?**

( Grow / Birth / Death / Reproduction )

**1-Birth**

**2- Grow**

**3- Reproduction**

**4- Death**

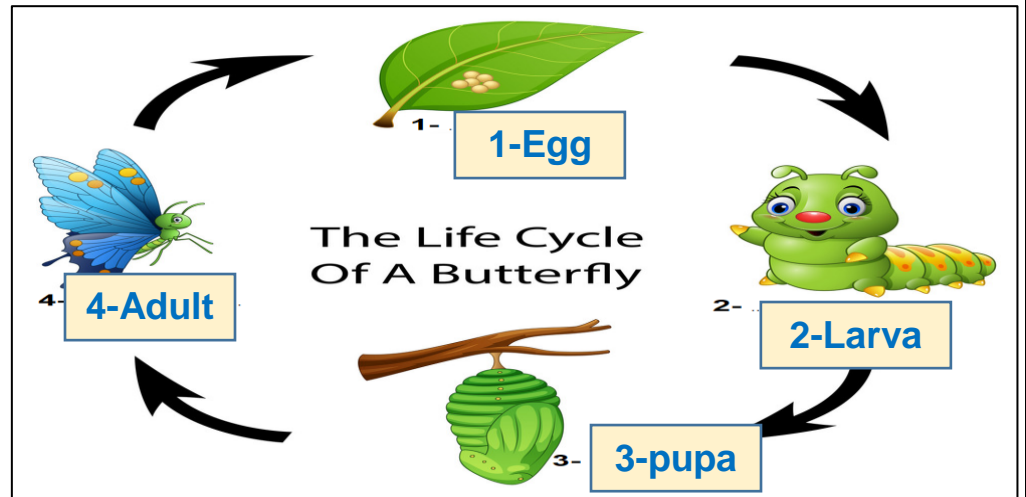
**Q12: -What kind of reproduction is happening in each picture?**

( Budding / Fertilization / Regeneration ) used this words

|   |  |  |
|---|--|--|
|  <p>Fish Egg</p> |  <p>Sea Star</p> |  <p>Hydra</p> |
| ( <b>Fertilization</b> )  | ( <b>Regeneration</b> )  | ( <b>Budding</b> )   |

**Q13-Put the stages of a butterfly's life cycle in order :**

**(Adult / Egg / pupa / larva)**



**Q14: Look at the pictures and write down whether the picture you see is:**

**( 1-Inherited behavior) Or (2- Learned behavior)**



**( 1 )**



**( 2 )**



**( 1 )**



**( 2 )**

Done By  
Arwa Al Mussabi  
Science Teacher 2019/2020