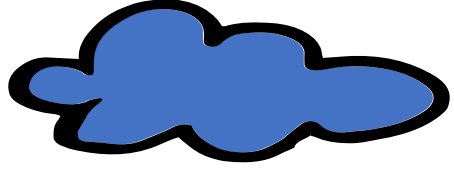
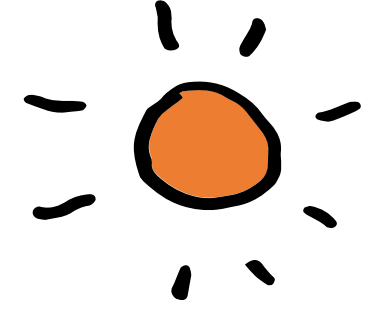




مؤسسة الإمارات للتعليم المدرسي
EMIRATES SCHOOLS ESTABLISHMENT

Science



TERM 1 2021/2022

Week 5: 19th - 25 September

Lesson 3 - water on the
earth



Lesson 3 : land and water

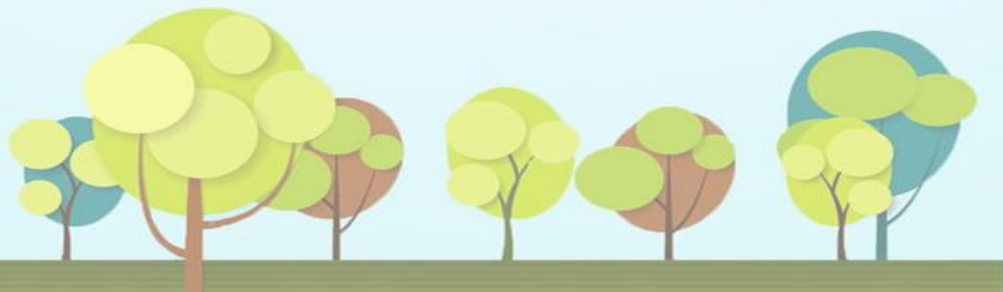


Play a
game

Watch
a video

Read a
book

Exit
ticket

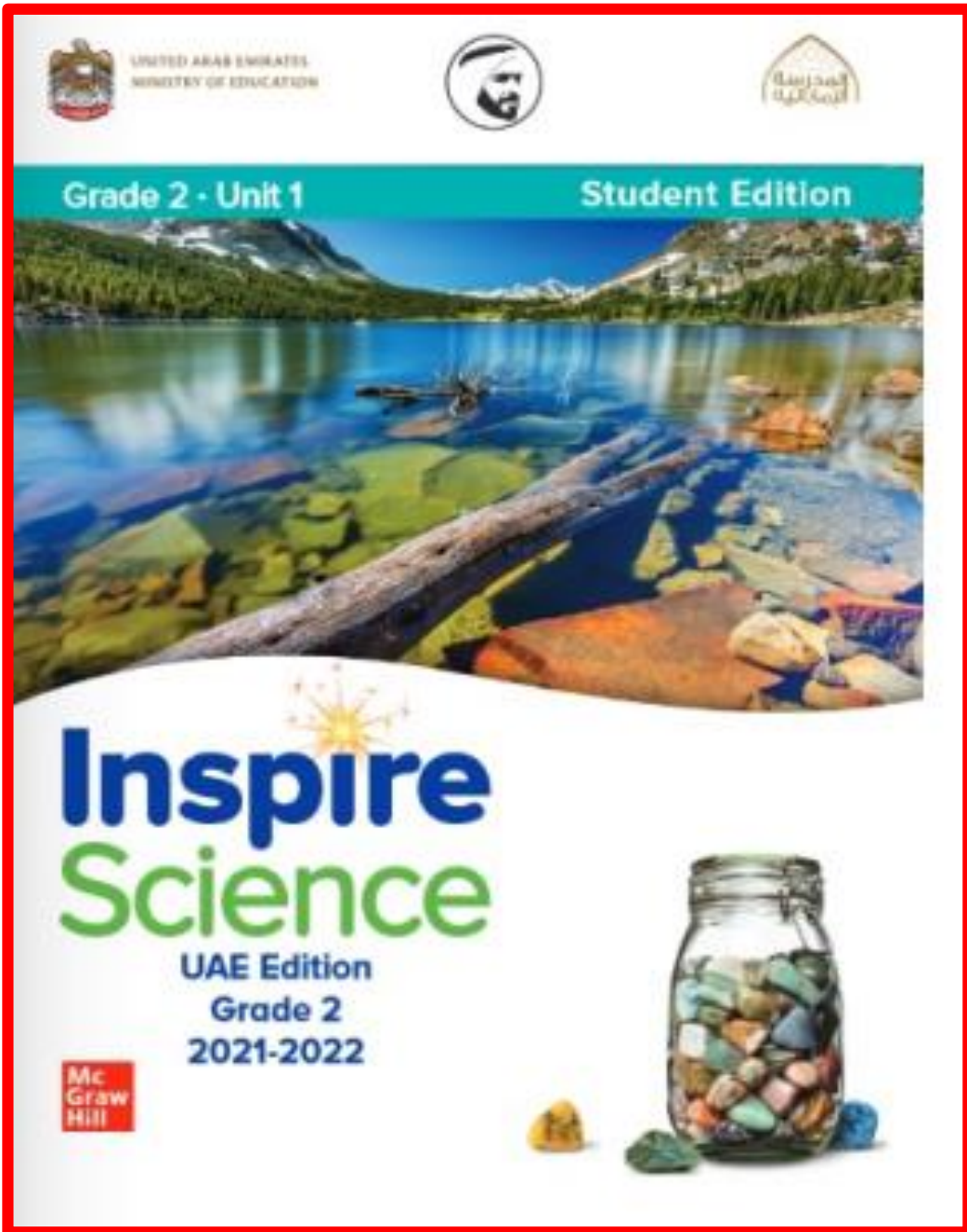


OUR LEARNING OUTCOMES

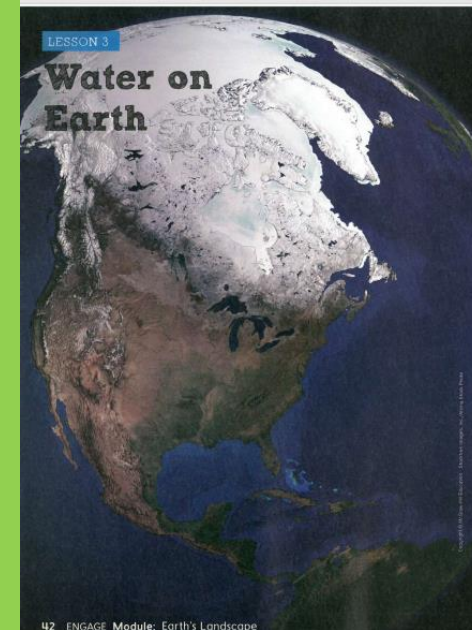
In this lesson, we are going to:



1. Students will obtain, evaluate, and communicate information to observe patterns in where water is found on Earth.

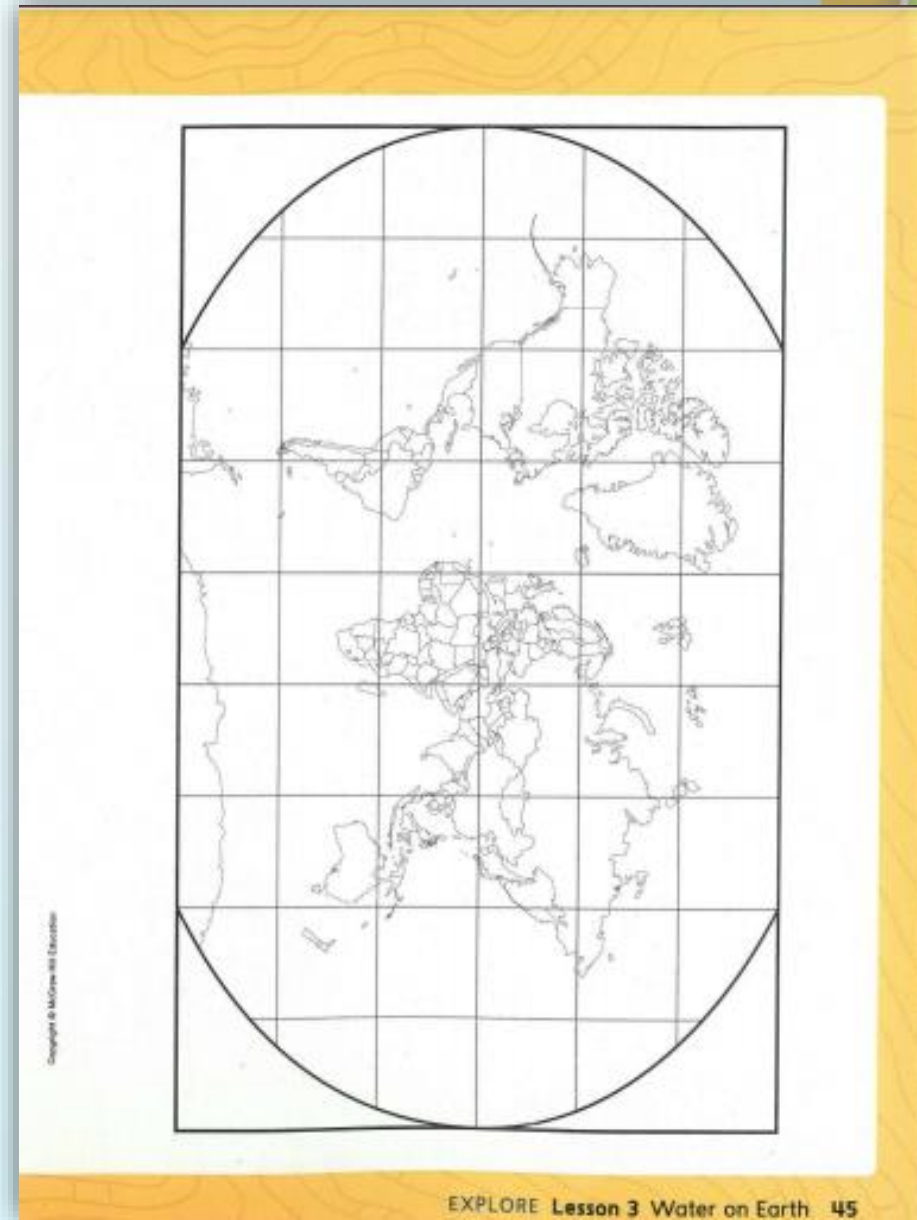


Lesson 3: water on Earth

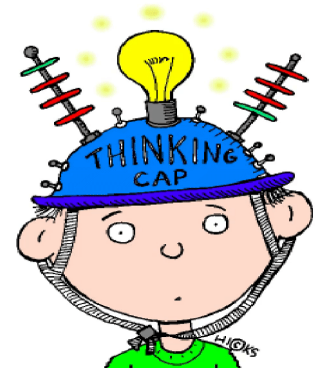
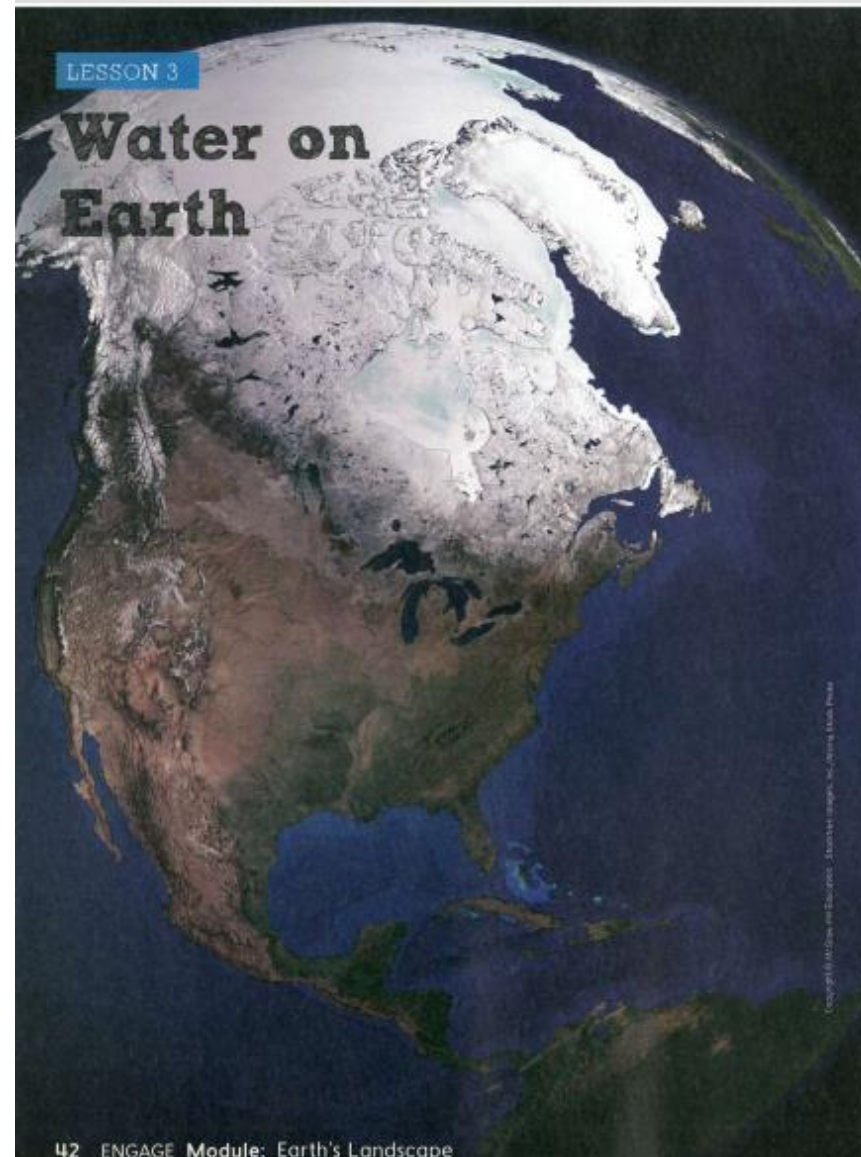


Page42

Color land area (green)
Color water area (blue)



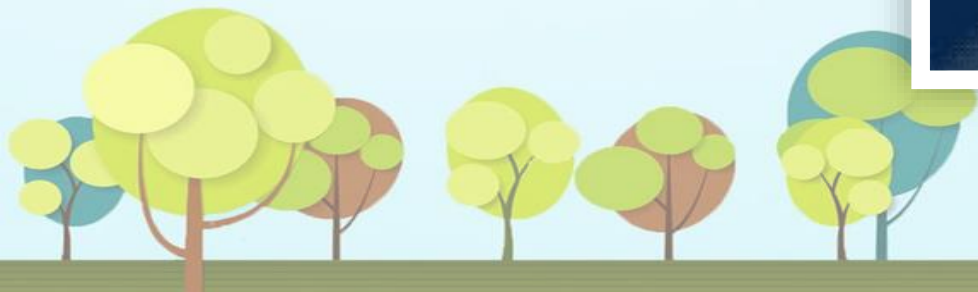
Essential Question:
Where can we find
water on Earth and
is it solid or liquid?





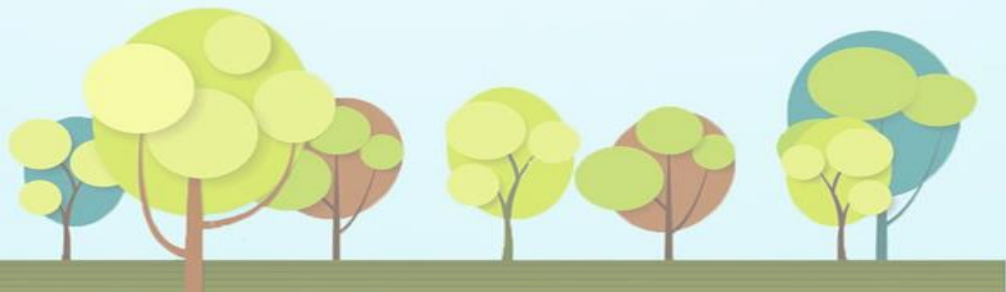
Vocabulary:

Ocean



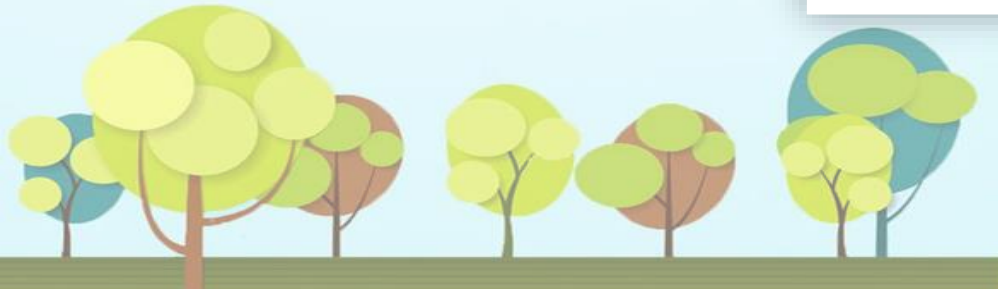
Vocabulary:

Lake



Vocabulary:

Ponds

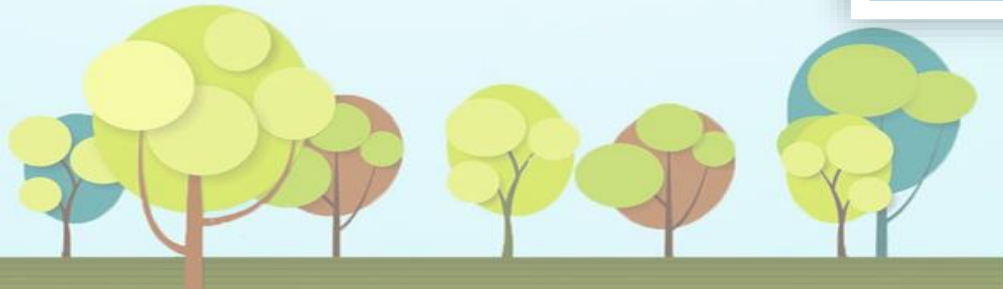
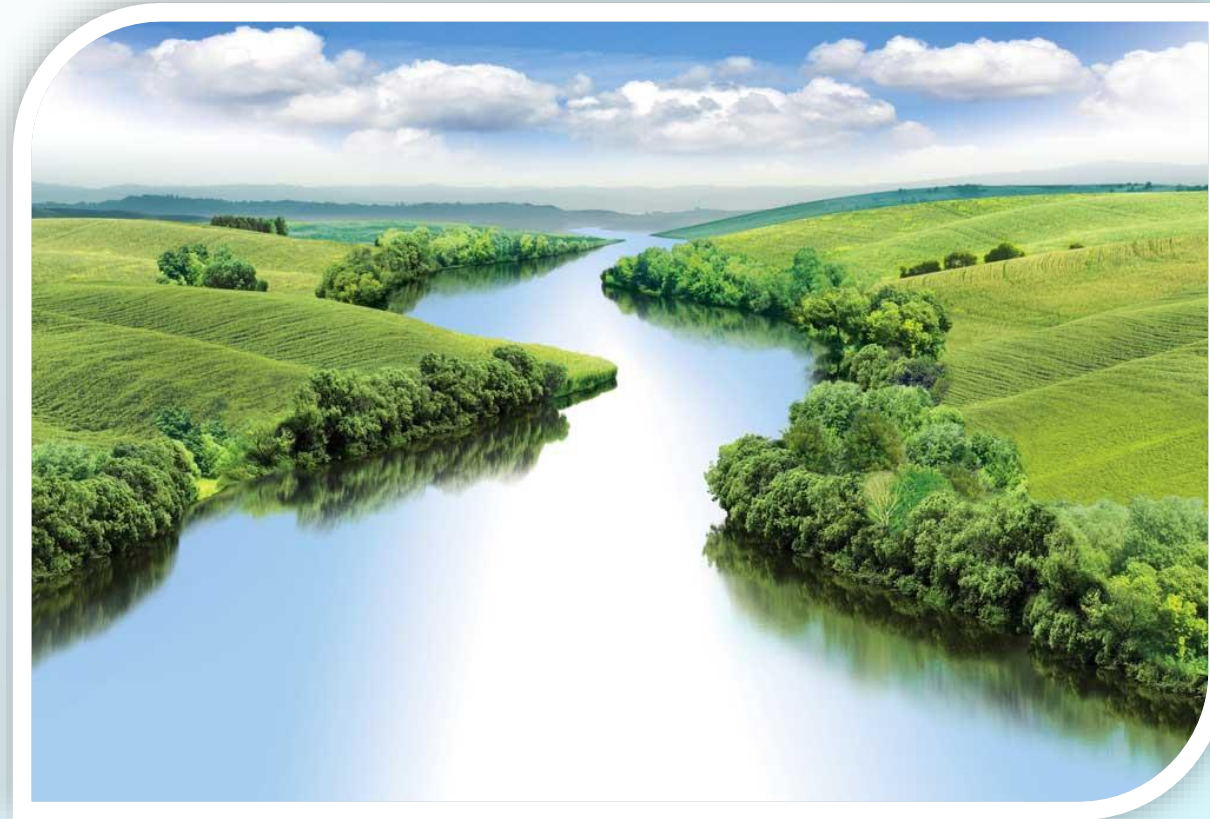




Vocabulary:



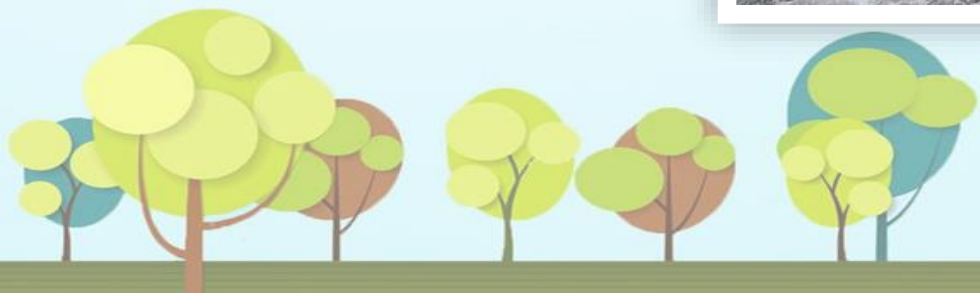
River





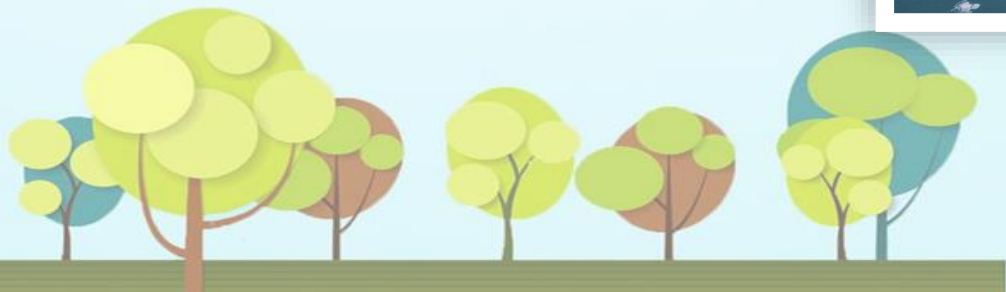
Vocabulary:

Stream



Vocabulary:

Glaciers





ENCOUNTER
THE PHENOMENON

What do the different colors on Earth's surface show?



GO ONLINE

Check out *Land and Water on Earth* to see the phenomenon in action.

Talk About It Look at the photo of Earth and watch the video. What do you observe? What do the different colors show? What do you wonder about these areas?

Did You Know?

70% of Earth's fresh water is frozen.



Copyright © McGraw Hill Education

What did you observe?

Page
43

INQUIRY ACTIVITY

Data Analysis

Earth's Surface

You have observed how land and water look on a photo of Earth. You will color a world map to compare the amount of land and water on Earth.

Make a Prediction Is Earth's surface covered with more land or water?

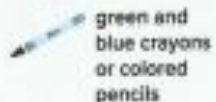
Carry Out an Investigation

1. Color the squares on the map. If the square is on a continent, or land, color it green.
2. If the square is mostly on water, color it blue.
3. **Record Data** Count the number of green squares and blue squares. Record your results here.

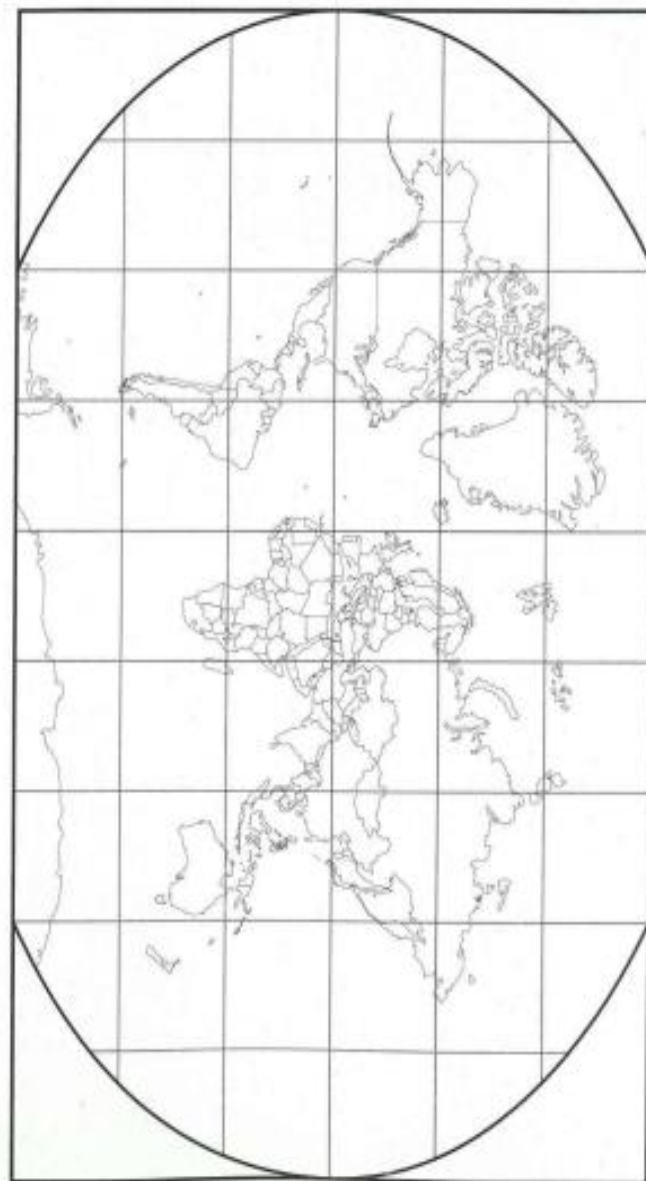


Number of Green Squares	Number of Blue Squares

Materials



green and blue crayons or colored pencils

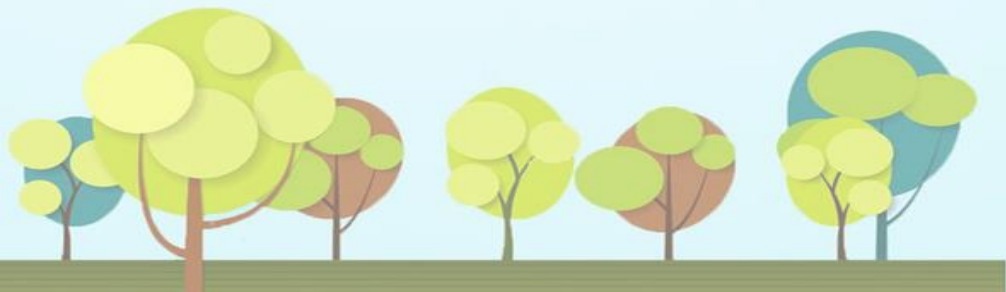


Copyright © McGraw-Hill Education. All rights reserved. McGraw-Hill Education

Copyright © McGraw-Hill Education



What different kinds of water can be found on Earth?



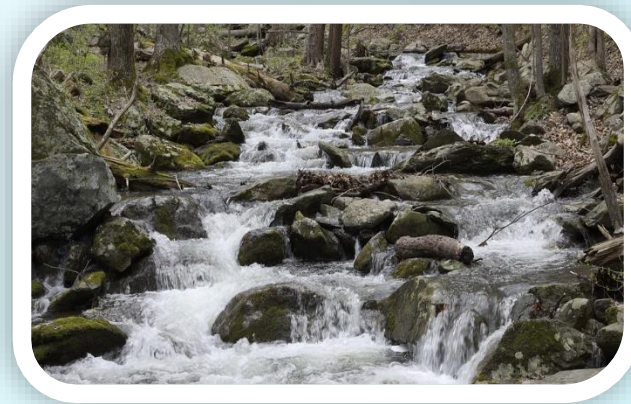
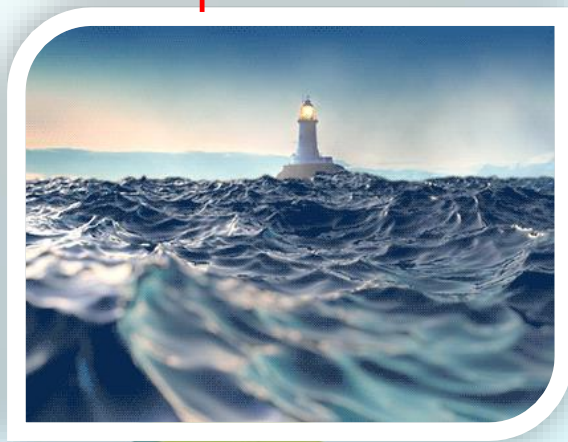


lakes

oceans

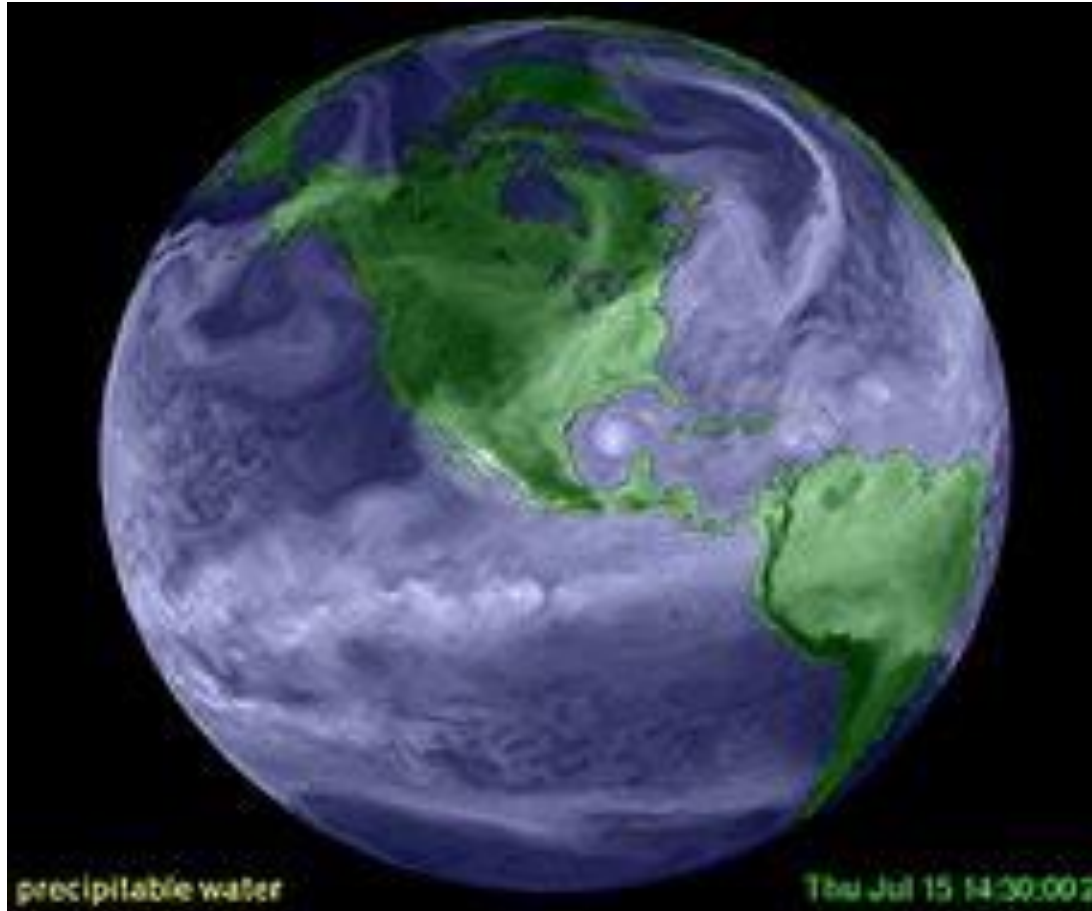
rivers,

streams



EXIT TICKET

Is Earth's surface covered with more land or water?



A. water

B. land

chat



محادثة

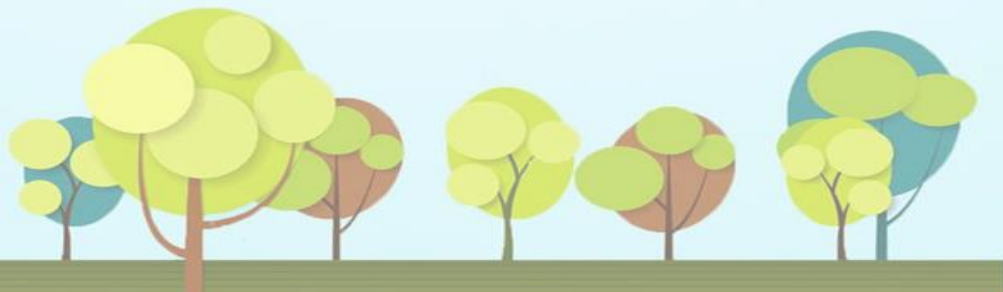
A stylized illustration of a yellow sun with rays, partially obscured by a white cloud. The sun is positioned in the top left corner of the slide.

Planner

Bodies of water



<https://wordwall.net/resource/21220776>

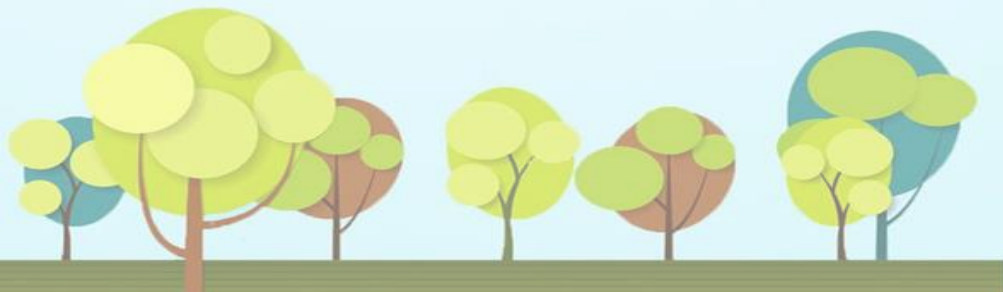


A stylized illustration of a bright yellow sun with rays, partially obscured by a white, fluffy cloud. The sun is positioned in the upper left corner of the slide.

Diagnostic test



<https://forms.gle/CzvDG71WZttDcaxC9>



OUR LEARNING OUTCOMES

start here

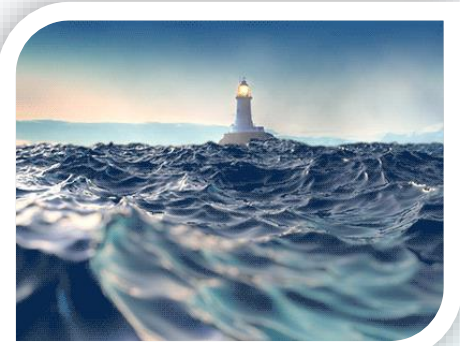
In this lesson, we are going to:



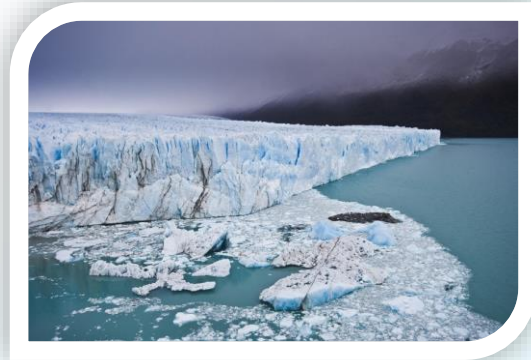
1. Students will use what they have learned throughout the module to work in pairs or small groups to build a model of land and water in their state

2.

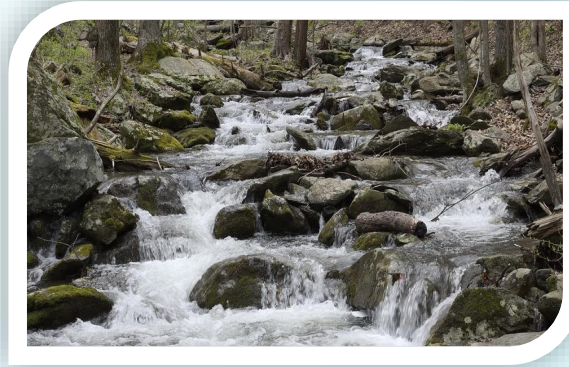
Vocabulary:



Ocean



Glaciers

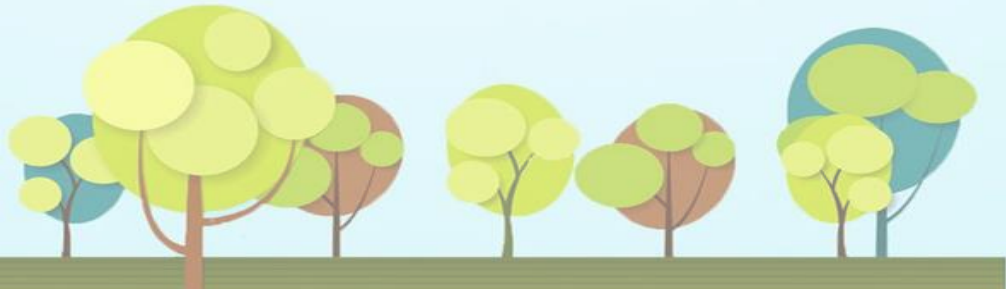
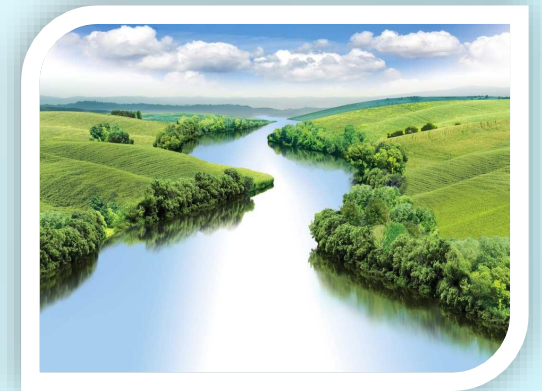


Stream



Ponds

River

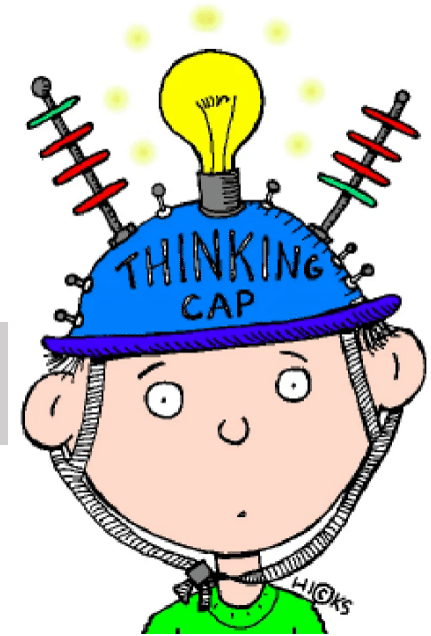


Bodies of water...

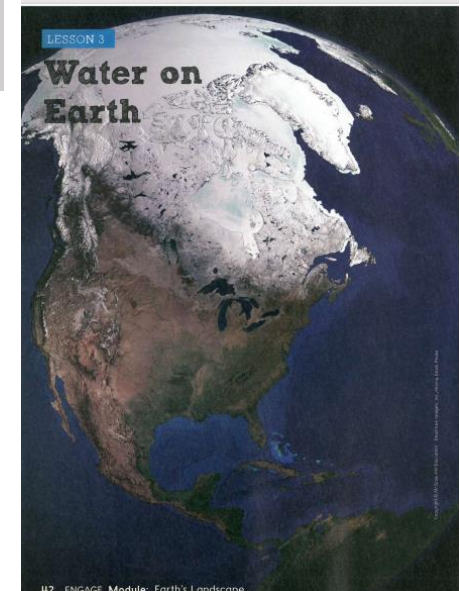


What do you see?

What **colors** and **state** can you recognize?



Page 48



FROM
500

THE WATER BODIES



VOCABULARY

Look for these words as you read:

glacier

lake

ocean

pond

river

stream

Bodies of Water

Earth has many forms of water. Almost all of that water is in the oceans. An **ocean** is a large, deep body of salt water.

Fresh water is found in lakes, ponds, rivers, and streams. A **lake** is a body of water that has land all around it. **Ponds** also have land all around them, but they are smaller than lakes.

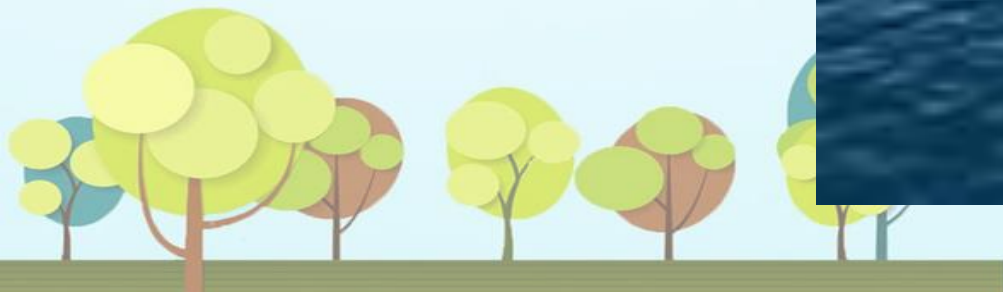


lake





Ocean : is a large, deep body of salt water






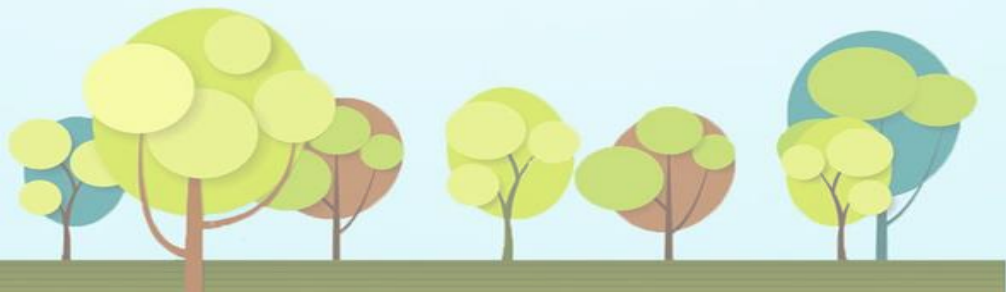

Fresh water

**Is can found in lakes, ponds , river,
and streams**



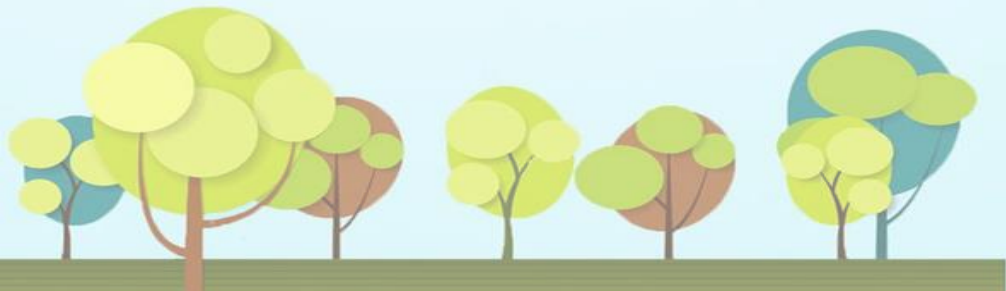


A lake is a body of water that has land all around it





pond also have land around them but they are smaller than lakes



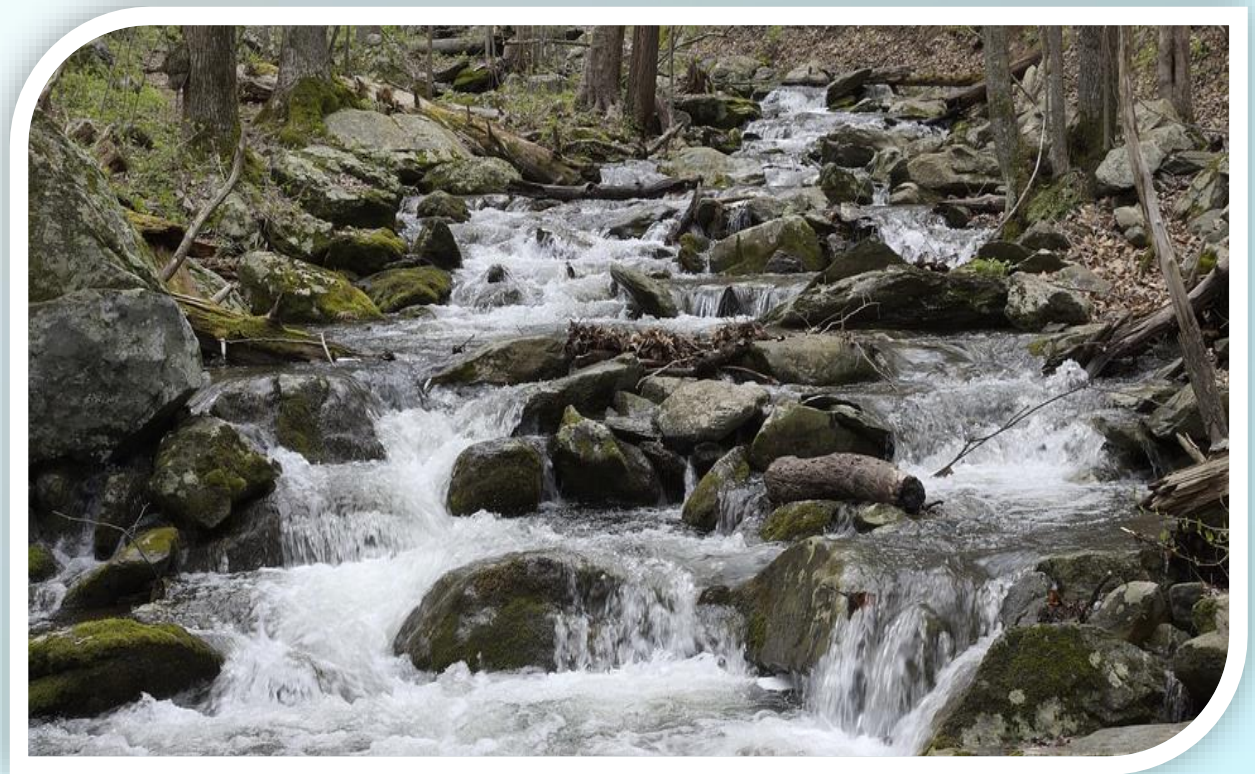


A river is a
body of fresh
water that
flows or
moves





Stream is smaller than a river



What is this?



A. lake

B. pond

chat



محادثة

What is this?



A. ocean

B. river

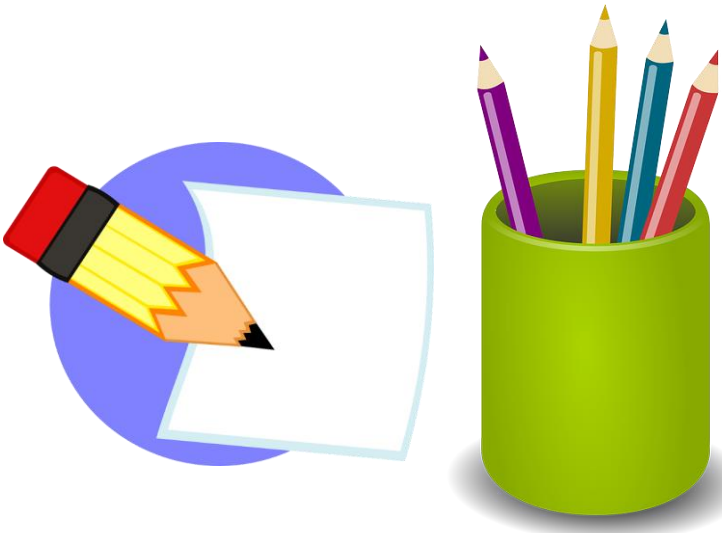
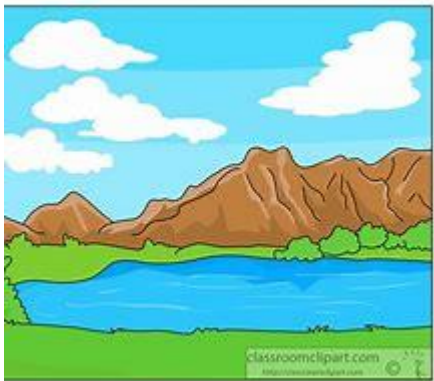
chat



محادثة

Can you draw me a picture of a lake?

lake





Copyright © McGraw-Hill Education. CampPhoto/Stock/Getty Images

1. Look at the photo. Use a pencil to trace the river as it flows into the ocean.

2. How are ponds and lakes similar?

3. How are some bodies of water connected?



What did we learn today?

EXIT TICKET

_____ is a large, deep body of salt water



A. ocean

B. lake


OUR LEARNING OUTCOMES

In this lesson, we are going to:



1. Identify the frozen water

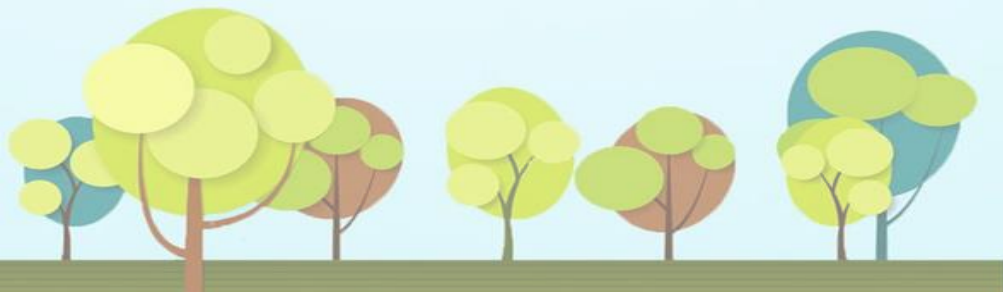




Frozen Water


Most of Earth's fresh water is frozen solid as ice. Frozen water can be found in glaciers.

Glaciers are large sheets of ice that flow slowly across the land.



Go online

- <https://nt7-mhe-complex-assets.mheducation.com/nt7-mhe-complex-assets/K-5-Sci-Mar062018/grade-2-module-a-lesson-3/index.html>

A screenshot of a digital interface showing a button with a blue mouse cursor icon and the text "GO ONLINE". To the right of the button, there is a paragraph of text: "Explore how land can shape water in the *Land Moves Water* simulation." The background is a light, slightly blurred image of a document or webpage.

GO ONLINE Explore
how land can shape
water in the *Land Moves
Water* simulation.



4. What color do you think is used to show glaciers on a map or globe?



Where can solid water be found on Earth? Explain any patterns you found.



Hydrosphere interactive worksheet (liveworksheets.com)



Sea



Lake

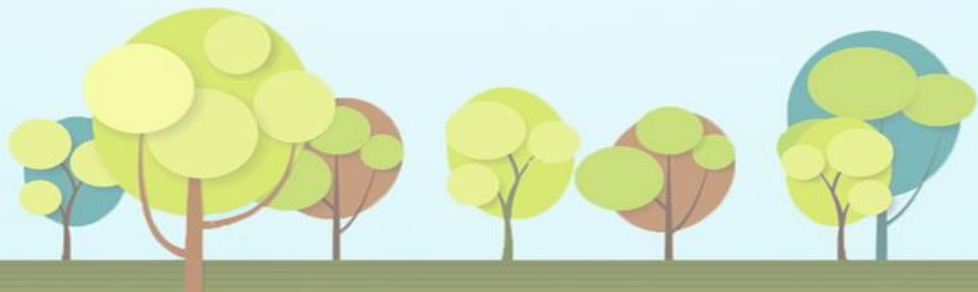


River



Ocean

Free images taken from Pixabay.





THANK

YOU