



STUDENT SECTION			
Name			Class
Student MOE number (SIS)	School MOE Number	STUDENT SIGNATURE	
School name			

PLEASE NOTE: This **SAMPLE** paper is to guide students on question types **ONLY**, and not the content for the final end-of-term examination. The assessed units can be found in the Assessment Guide.

Design Technology

SAMPLE EXAM PAPER

Grades 7, 8, 9 and ASP (6, 7, 8, 9)

Term 1

Date: November 2017

Duration: 35 minutes

TEACHER NOTES & INSTRUCTIONS

Please tick ✓ the correct answers in **RED INK** and then write the mark awarded in the marking columns. With multiple mark answers highlight where the mark is awarded by **underlining** or by using an extra tick.

STUDENT INSTRUCTIONS –

Students must attempt **all** questions
This is a **closed-book** examination.
For this examination, you must have:

1. An ink pen – blue or black.
2. A pencil.

FOR ADMIN ONLY MARKING RECORD

Section	Section TOTALS
Section 1	
Section 2	
Section 3	
Section 4	
Section 5	
MARKER SIGNATURE	TOTAL MARKS
MODERATOR SIGNATURE	

SECTION 1 – Matching

Match the terms with its explanations. Write the matching letter in the correct box. The first one has been done for you. (1 mark each)

Terms

<ul style="list-style-type: none"> <i>Example</i>
 	F
---	---

1. IP address	
2. Complementation	
3. \leq	

Explanations

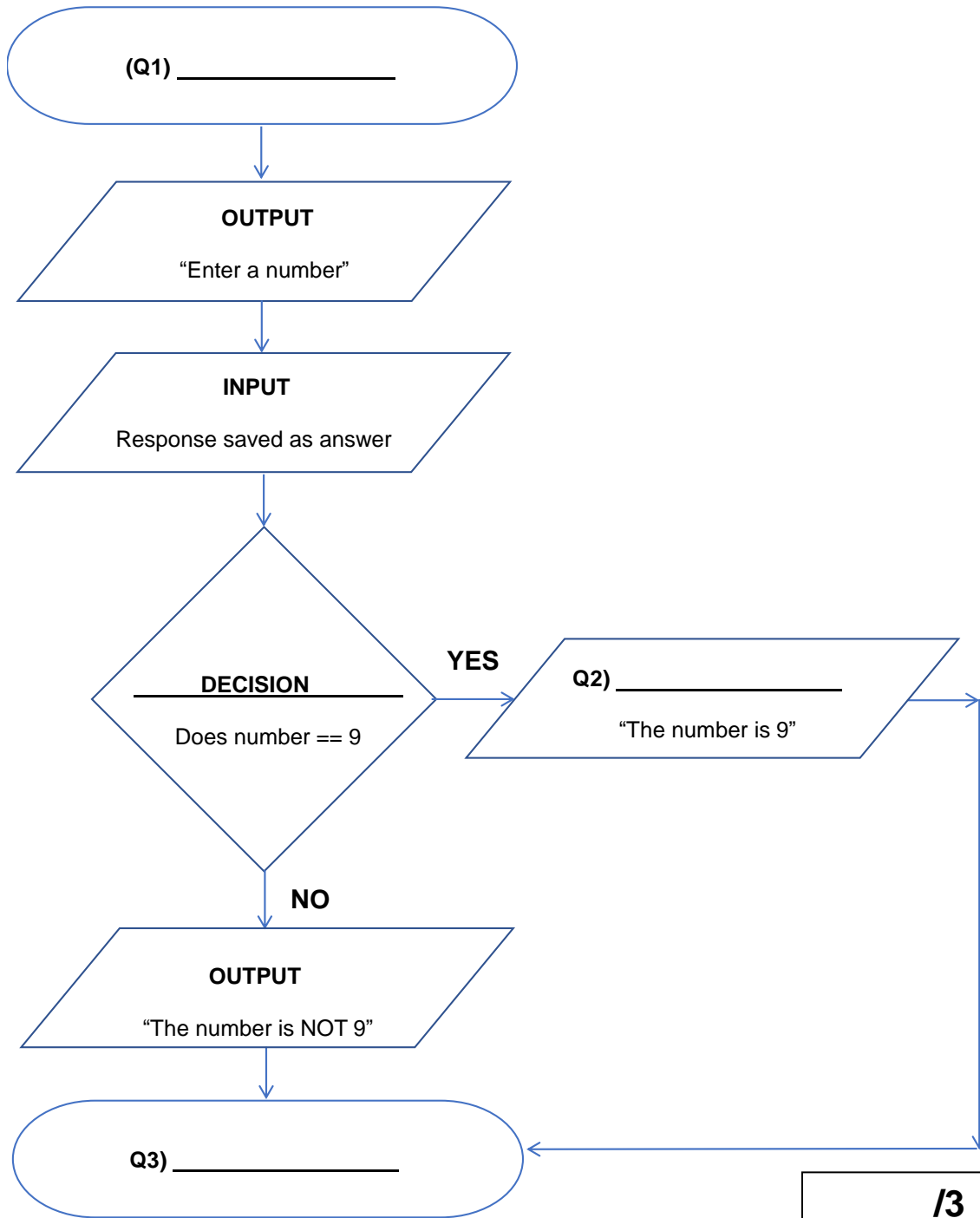
Line-break tag	F
Less than or equal to	A
Numbers that can identify each computer	B
How colours are seen next to other colours	C

/ 3

SECTION 2 – Fill in the Blanks

Fill in the blanks with answers from the answer bank. One of them has been done for you.
(1 mark for each blank)

OUTPUT	START	INPUT	STOP	DECISION
--------	-------	-------	------	----------



SECTION 3 – Multiple Choice

Choose and circle the correct answer – A, B, C or D.

(1 mark each)

Example: The last part of a URL is called a:

- A) suffix
- B) tag
- C) prefix

1. Which of the following is indented?
 - A) **Hello**
 - B) *Hello*
 - C) Hello
2. What is an algorithm?
 - A) A box to store instructions
 - B) A sequence of instructions
 - C) A mathematical operator
3. Which of the following is a URL?
 - A) 151.253.49.178
 - B) <title> Ministry of Education Website </title>
 - C) http://example.com/example1/index.htm

/3

SECTION 4 – True or False

Choose and circle the correct answer TRUE or FALSE.

(1 mark each)

Example:

CSS is used to request HTML files from a server.

TRUE

FALSE

1. Complementation is how we see colours in relation to other colours TRUE FALSE
2. Breadcrumbs tell a user where they are on a web site. TRUE FALSE
3. A website that can be trusted is known as an unreliable website. TRUE FALSE

/3

SECTION 5 – Short Answers

(3 marks each)

1. Write down the three variables used in this block of code

```
num1 = 1
num1 = num1 * 5
num2 = 3
num = num2 - 2
ans = num1 + num2
print(ans)
```

2. . Purpose is one of the four main design principles when creating a website. Can you list the other three?

3. Complete the HTML code for the **ordered list** below, using correct tags and indentation.

- | |
|--|
| <ol style="list-style-type: none">1. Eggs2. Milk3. Sugar |
|--|

<!DOCTYPE html>

<html>

<head>

</body>

</html>

/9

End of Examination

TOTAL
/ 21