

## P2-Subtract fractions with unlike denominators

Hind bought this sandwich.

اشترت هند هذه الساندويتش.

She ate  $\frac{3}{5}$  ft of the sandwich.

أكلت  $\frac{3}{5}$  ft من هذه الساندويتش.

How much of the sandwich is left?

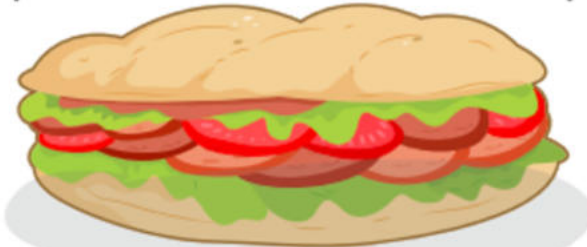
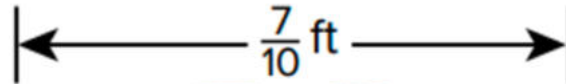
كم تبقى من الساندويتش؟

$$\frac{7}{10} - \frac{3 \times 2}{5 \times 2}$$

$$\begin{aligned} 5 \times 1 &= 5 \\ 5 \times 2 &= 10 \end{aligned}$$

$$\begin{aligned} 10 \times 1 &= 10 \\ 10 \times 2 &= 20 \end{aligned}$$

$$\frac{7}{10} - \frac{6}{10} = \frac{1}{10}$$



A

$\frac{1}{5}$  ft

B

$\frac{4}{5}$  ft

C

$\frac{1}{10}$  ft

D

$\frac{4}{10}$  ft



## P2-Add mixed numbers with unlike denominators

Salem rides his bike  $1\frac{1}{2}$  miles to school. After school, he rides  $2\frac{2}{5}$  miles to his piano lesson.

How many miles does Salem ride in

all?

يركب سالم دراجته  $1\frac{1}{2}$  ميلاً إلى المدرسة.  
و بعد المدرسة، يركب  $2\frac{2}{5}$  أميال إلى درس البيانو.  
كم إجمالي الأميال التي يركبها سالم؟

A	$1\frac{3}{7}$	B	$4\frac{3}{7}$	C	$2\frac{9}{10}$	D	$3\frac{9}{10}$
---	----------------	---	----------------	---	-----------------	---	-----------------

$$1\frac{1 \times 4}{2 \times 5} + 2\frac{2 \times 2}{5 \times 2} = 1\frac{4}{10} + 2\frac{4}{10} = 3\frac{8}{10}$$



## P2-Subtract mixed numbers with unlike denominators

What is the difference?

ما الفرق؟

$$6\frac{1}{2} - 3\frac{1}{3} = \underline{\hspace{2cm}}$$

A	$3\frac{1}{5}$	B	$3\frac{2}{6}$	C	$3\frac{1}{3}$	D	$3\frac{1}{6}$
---	----------------	---	----------------	---	----------------	---	----------------

$$6\frac{3}{6} - 3\frac{2}{6} = 3\frac{1}{6}$$

Use place-value understanding and equivalent representations to divide a decimal by a whole number-P1

What is the quotient?

$2.4 \div 6 = 0.4$   
 $24 \div 6 = 4$

$0.63 \div 9 = 0.07$

ما ناتج القسمة؟

مثال

$0.42 \div 7 = 0.06$   
 $42 \div 7 = 6$

A	0.007	B	0.07	C	0.7	D	7.0
---	-------	---	------	---	-----	---	-----



Sun

Mon

Tus

Wed

Thu

Wknd

...



Sun

Mon

Tus

Wed

Thu

Wknd

...

## P1- Explain how to add fractions with unlike denominators

Which common multiple can you use  
as a like denominator to add the  
fractions?

ما المضاعف المشترك الذي يمكنك استخدامه  
كمقام متشابه لجمع الكسور؟

$$\frac{2}{3} + \frac{3}{4}$$

A	6	B	8	C	12	D	18
---	---	---	---	---	----	---	----



Sun

Mon

Tus

Wed

Thu

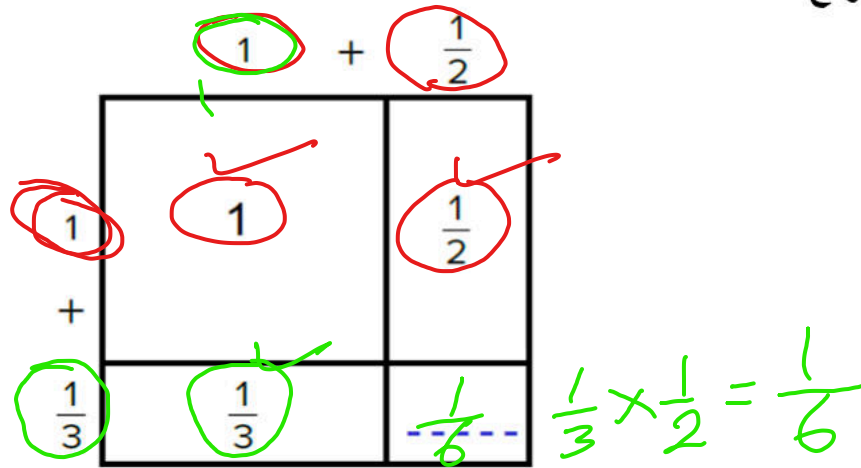
Wknd

...

# P1-Use an area model to represent multiplication of mixed numbers

Complete the area model.

أكمل نموذج المساحة.



A	$\frac{1}{5}$	B	$\frac{1}{2}$	C	$\frac{1}{6}$	D	$\frac{1}{3}$
---	---------------	---	---------------	---	---------------	---	---------------



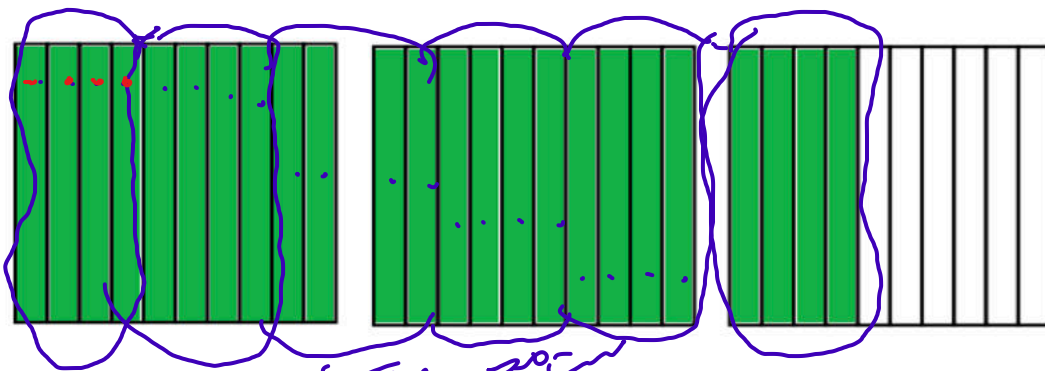
# Represent division of decimals by whole numbers using equal sharing or equal grouping-P2

Use the decimal grids to solve.

$$2.4 \div 6 = 0.4$$

استخدم النموذج العشري للحل.  $2.4 \div 6 = 0.4$

$$24 \div 6 = 4$$



~~استخدم النموذج العشري للحل~~  
 ~~$2.4 \div 6 =$~~

A	0.2	B	0.4	C	0.6	D	0.8
---	-----	---	-----	---	-----	---	-----



Sun

Mon

Tus

Wed

Thu

Wknd

...

# P1-Use benchmark numbers to estimate the sums and differences of fractions

Circle the best estimate.

حوط أفضل تقدير.

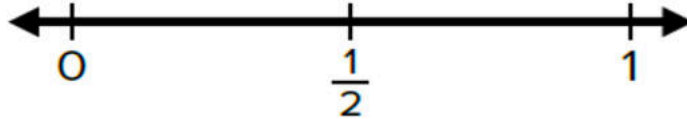
$$\frac{1}{5} = 0$$

$$\frac{2}{5} = \frac{1}{2}$$

$$\frac{4}{5} = 1$$

$$1 + 1 = 2$$

$$\frac{5}{6} + \frac{13}{14}$$



A	$\frac{1}{2}$	B	1	C	2	D	20
---	---------------	---	---	---	---	---	----



Sun

Mon

Tus

Wed

Thu

Wknd

...

# P1-Use a representation to add fractions with unlike denominators

Complete the equation using addends with like denominators.

أكمل المعادلة باستخدام حدود جمعية متشابهة المقامات.

$$\frac{5}{8} + \frac{1}{4} = \frac{5}{8} + \frac{2}{8} = \frac{7}{8}$$



A	$\frac{5}{8} + \frac{4}{8}$	B	$\frac{5}{8} + \frac{3}{8}$	C	$\frac{5}{8} + \frac{2}{8}$	D	$\frac{5}{8} + \frac{1}{8}$
---	-----------------------------	---	-----------------------------	---	-----------------------------	---	-----------------------------



Sun

Mon

Tus

Wed

Thu

Wknd

...

## P2-Write an equivalent equation containing whole numbers to solve a division equation

Which equivalent expression uses powers of 10 to help you solve?

أي تعبير مكافئ يستخدم قوى العدد 10 لمساعدتك على الحل؟

$$10.\underline{8} \div 1.\underline{2} = \underline{\hspace{2cm}}$$

$$108 \div 12$$

من

$$\begin{array}{r} \times 100 \\ 0.\underline{25} \div 2.\underline{52} \\ \hline 25 \div 252 \end{array}$$

A

$108 \div 1.2$

B

$108 \div 12$

C

$1.08 \div 12$

D

$108 \div 0.12$





Mon

Tue

Wed

Thu

Fri

Wknd

...



Tuesday



## P2-Add and subtract mixed numbers with regrouping

What is the sum?

ما المجموع؟

$$3\frac{3}{4} + 5\frac{2}{3} = \underline{\hspace{2cm}}$$

$$\begin{aligned} 3\frac{9}{12} + 5\frac{8}{12} &= 8\frac{17}{12} \\ &= 8 + 1\frac{5}{12} = 9\frac{5}{12} \end{aligned}$$

A	$8\frac{1}{7}$	B	$8\frac{5}{7}$	C	$8\frac{5}{12}$	D	$9\frac{5}{12}$
---	----------------	---	----------------	---	-----------------	---	-----------------



Sun

Mon

Tus

Wed

Thu

Wknd

...



Sun

Mon

Tus

Wed

Thu

Wknd

...

## Use a representation to multiply a fraction by a fraction - P2

The area model represents what product?

ما حاصل الضرب الذي يمثله نموذج المساحة؟



$$\frac{2}{3} \times \frac{3}{4} = \frac{6}{12}$$

<b>A</b>	$\frac{3}{5} \times \frac{2}{4}$	<b>B</b>	$\frac{1}{4} \times \frac{1}{3}$	<b>C</b>	$\frac{3}{5} \times \frac{1}{3}$	<b>D</b>	$\frac{3}{4} \times \frac{2}{3}$
----------	----------------------------------	----------	----------------------------------	----------	----------------------------------	----------	----------------------------------





Sun

Mon

Tus

Wed

Thu

Wknd

...

Use place-value patterns to divide a decimal by a power of  $10^{-1}$

What is the quotient?

ما ناتج القسمة؟

$$33.2 \div 0.1 = \underline{\hspace{2cm}}$$

A	0.332	B	3.32	C	33.2	D	332
---	-------	---	------	---	------	---	-----





Sun

Mon

Tus

Wed

Thu

Wknd

...

## Estimate quotients of decimals to determine if calculations are reasonable - P1

Estimate the quotient.

قدّر ناتج القسمة.

$$\begin{array}{l} \times 10 \quad \times 10 \\ 29.7 \div 0.5 = d \end{array}$$

صحيح

$$\begin{array}{l} \times 100 \quad \times 100 \\ 29.7 \div 0.49 \end{array}$$

$$\begin{array}{l} 297 \div 5 \\ 300 \div 5 = 60 \end{array}$$

$$\begin{array}{l} 2970 \div 49 \\ 3000 \div 50 = 60 \end{array}$$

A	90	B	80	C	60	D	40
---	----	---	----	---	----	---	----

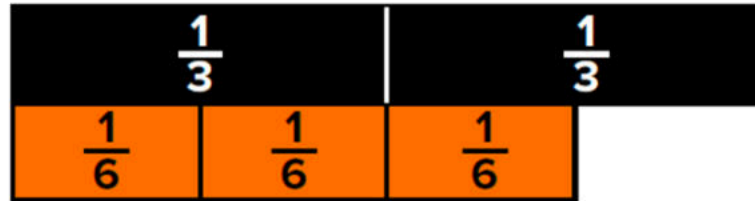


# P1-Use a representation to subtract fractions with unlike denominators

Complete the equation with equivalent fractions that have like denominators.

أكمل المعادلة باستخدام كسور متكافئة متشابهة المقامات.

$$\frac{2 \times 2}{3 \times 2} \frac{3}{6} = \frac{4}{6} - \frac{3}{6}$$



<b>A</b>	$\frac{6}{6} - \frac{3}{6}$	<b>B</b>	$\frac{5}{6} - \frac{3}{6}$	<b>C</b>	$\frac{4}{6} - \frac{3}{6}$	<b>D</b>	$\frac{6}{6} - \frac{2}{6}$
----------	-----------------------------	----------	-----------------------------	----------	-----------------------------	----------	-----------------------------



Sun

Mon

Tus

Wed

Thu

Wknd

...

# Use a representation to multiply a whole number by a fraction - P1

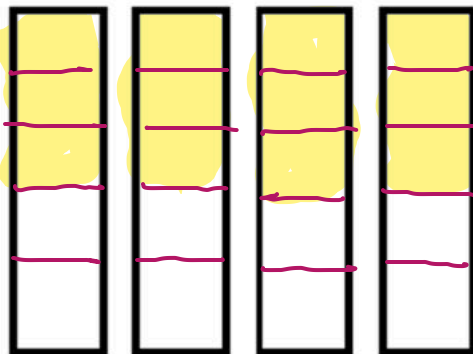
What is the product?

Use a representation to solve.

ما ناتج الضرب؟

استخدم التمثيل للحل.

$$\frac{3}{5} \times 4 = \frac{12}{5}$$



A	$\frac{1}{5}$	B	$\frac{7}{5}$	C	$\frac{12}{5}$	D	$\frac{13}{5}$
---	---------------	---	---------------	---	----------------	---	----------------



Sun

Mon

Tus

Wed

Thu

Wknd

...

## Multiply a fraction by a fraction - P1

Complete the equation.

أكمل المعادلة.

$$\frac{1}{\boxed{9}} \times \frac{1}{3} = \frac{1}{27}$$

A	6	B	7	C	9	D	8
---	---	---	---	---	---	---	---



Sun

Mon

Tus

Wed

Thu

Wknd

...



Sun

Mon

Tus

Wed

Thu

Wknd

...

## P2-Find the area of a rectangle with fractional side lengths by multiplying the side lengths

The top of a table measures  $1\frac{3}{4}$  ft by 2 ft.

What is the area of the tabletop?

قياس الجزء العلوي من الطاولة  $1\frac{3}{4}$  ft في 2 ft .

ما هي مساحة الجزء العلوي للطاولة؟

$$\begin{aligned}
 A &= L \times W \\
 &= 2 \times 1\frac{3}{4} \\
 &= \frac{2}{1} \times \frac{7}{4} = \frac{14}{4} = 3\frac{2 \div 2}{4 \div 2} = 3\frac{1}{2}
 \end{aligned}$$

A	B	C	D
$2\frac{1}{2}$ square ft	$2\frac{3}{4}$ square ft	$3\frac{1}{2}$ square ft	$3\frac{3}{4}$ square ft





Sun

Mon

Tus

Wed

Thu

Wknd

...

## P2-Multiply mixed numbers by writing the mixed numbers as fractions and then multiplying fractions

The weight of Ali's backpack is shown.

His brother's backpack weighs  $2\frac{1}{4}$

times that much.

How much does Ali's brother's backpack weigh?

$$2\frac{1}{4} \times 6\frac{2}{3}$$

$$\frac{9}{4} \times \frac{20}{3} = \frac{180}{12} = 15$$



$6\frac{2}{3}$  lb

تزن حقيبة الظهر لعلي كما هو موضح.

تزن حقيبة الظهر لشقيقه  $2\frac{1}{4}$  ضعف

هذا الوزن.

كم تزن حقيبة الظهر لشقيق علي؟

$$\begin{array}{r} 12 \overline{) 180} \\ \underline{-120} \phantom{0} \\ 60 \phantom{0} \\ \underline{-60} \\ 00 \end{array} \quad \begin{array}{l} 12 \times 10 \\ 12 \times 5 \end{array}$$

A	$8\frac{2}{12}$ lb	B	$9\frac{2}{12}$ lb	C	15 lb	D	12 lb
---	--------------------	---	--------------------	---	-------	---	-------





Sun

Mon

Tus

Wed

Thu

Wknd

...

## P2- Explain how the size of the factors impacts the size of the product without performing the multiplication

Which fraction will result in a product that is **greater than**  $\frac{3}{4}$ ?

ما الكسر الذي يجعل ناتج الضرب أكبر من  $\frac{3}{4}$ ؟

$$\frac{3}{4} \times \frac{5}{4}$$

أكبر  
↓

مثال  
less than  $\frac{3}{4}$

→ أخفض  $\frac{1}{3}$

equal  $\frac{3}{4}$

→ متساويين  $\frac{5}{5}$

A	$\frac{1}{3}$	B	$\frac{1}{2}$	C	$\frac{5}{4}$	D	$\frac{5}{8}$
---	---------------	---	---------------	---	---------------	---	---------------

